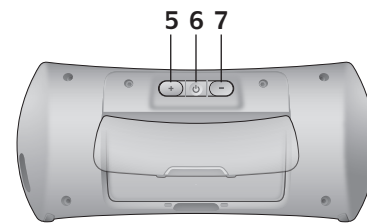
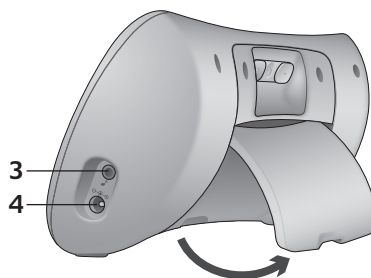
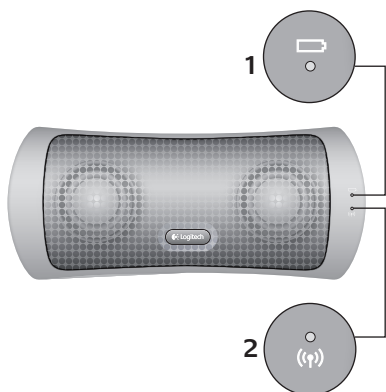


Getting started with Logitech® Wireless Speaker for iPad®

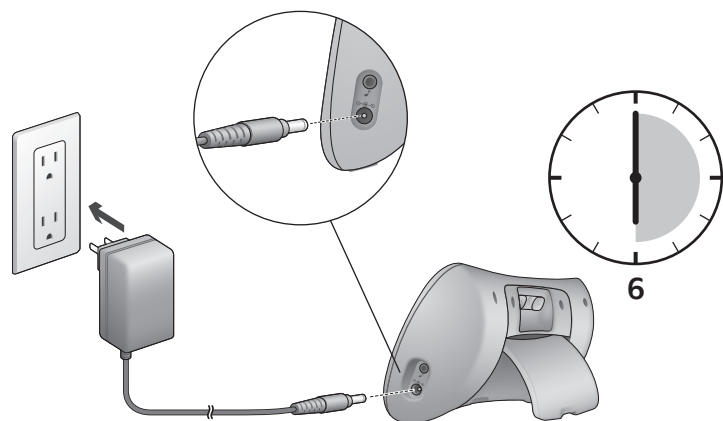


1



1. Power/battery-life indicator LED
2. Wireless connection indicator LED
3. 3.5 mm auxiliary input
4. Power input
5. Volume up
6. Power on/off
7. Volume down

2



Fully charging the battery can take up to six hours.
Your speaker can be used while charging.



www.logitech.com

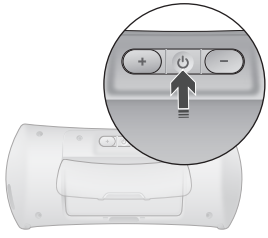
© 2011 Logitech. Logitech, the Logitech logo, and other Logitech marks are owned by Logitech and may be registered. Microsoft, Windows Vista, Windows, and the Windows logo are trademarks of the Microsoft group of companies. Apple, iPod, iPhone, Mac, and Macintosh are trademarks of Apple Inc., registered in the U.S. and other countries. iPad is a trademark of Apple Inc. All other trademarks are the property of their respective owners. Logitech assumes no responsibility for any errors that may appear in this manual. Information contained herein is subject to change without notice.

620-003518.002

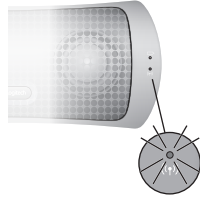
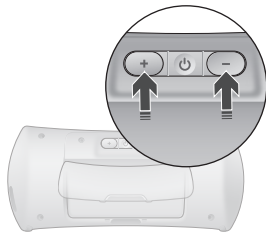
Connecting your Wireless Speaker with your iPad® or iPhone®

To connect with your iPad or iPhone (or one other Bluetooth® device), please follow the instructions below:

1. Power on your Wireless Speaker.



2. Simultaneously hold down the Volume Up and Volume Down buttons on the back of your Wireless Speaker for 10 seconds. The green wireless connection LED will begin blinking quickly.



3. Power on your iPad or iPhone.
4. Select the Settings icon.
5. Select the General icon.
6. Select the Bluetooth menu, and ensure that Bluetooth is turned on.
7. Find the Logitech Wireless Speaker and select it.
8. Confirm that you want to connect the Wireless Speaker with your iPad or iPhone by selecting the Pair button. A confirmation window appears after you have selected the Wireless Speaker. There may be a slight delay so please wait.
9. Your Wireless Speaker is now connected with your iPad or iPhone.

Your Wireless Speaker will always connect to the last connected device. So the next time you turn on your speaker, it will connect to your iPad or iPhone if either unit was the last connected device.

Useful notes and tips

You can only connect your Wireless Speaker with one device at a time.

If the wireless connection is lost between your iPad or iPhone and your speaker, you will need to follow steps 4 through 7 to re-establish the wireless connection.

When your Wireless Speaker is connected to your iPad or iPhone, you must adjust the volume through the controls on the Wireless Speaker.

The Logitech Wireless Speaker will pair with two wireless devices. If you decide to pair an additional wireless device to your Wireless Speaker, the previous pairing will be lost.

Battery-life indicators

Discharging	
Solid green	50–100% battery life
Solid orange	10–<50% battery life
Solid red	<10% battery life
No light	Speaker is off or battery needs recharging

Charging	
Solid green	100% charged
Pulsing green	50–<100% charged
Pulsing orange	10–<50% charged
Pulsing red	<10% charged

Note: The battery is removable for disposal/recycling only. Please see www.logitech.com/support for more information.

If you quickly press the power button, your speaker will turn off but will continue to charge its battery. If you hold the power button down for 10 seconds, your speaker will turn off and go into a power-conservation mode, which will stop its battery from charging.

Note: If your speaker is charging in the “off” state, it will automatically turn completely off after its battery is fully charged.

Wireless connection indicators

Solid green	Connection made between iPad and speaker
Flashing green	Seeking a connection between iPad and speaker. Green light will flash for 5 minutes before going out.
No light	iPad or speaker is out of wireless range for more than 5 minutes or speaker is powered off

Note: Wireless connection indicators disabled when using 3.5 auxiliary input.

Help with Setup

Something not sound right? No sound at all?

- Move the speaker closer to your iPad.
- Adjust the volume to an audible setting in your audio source and speaker.
- If another audio device was plugged directly into the speaker, make sure the 3.5 mm cable is unplugged.
- Quit your music application and then restart it.

Visit www.logitech.com for more troubleshooting tips.

www.logitech.com/support



United States +1 646-454-3200

What do you think?

Please take a minute to tell us. Thank you for purchasing our product.

www.logitech.com/ithink