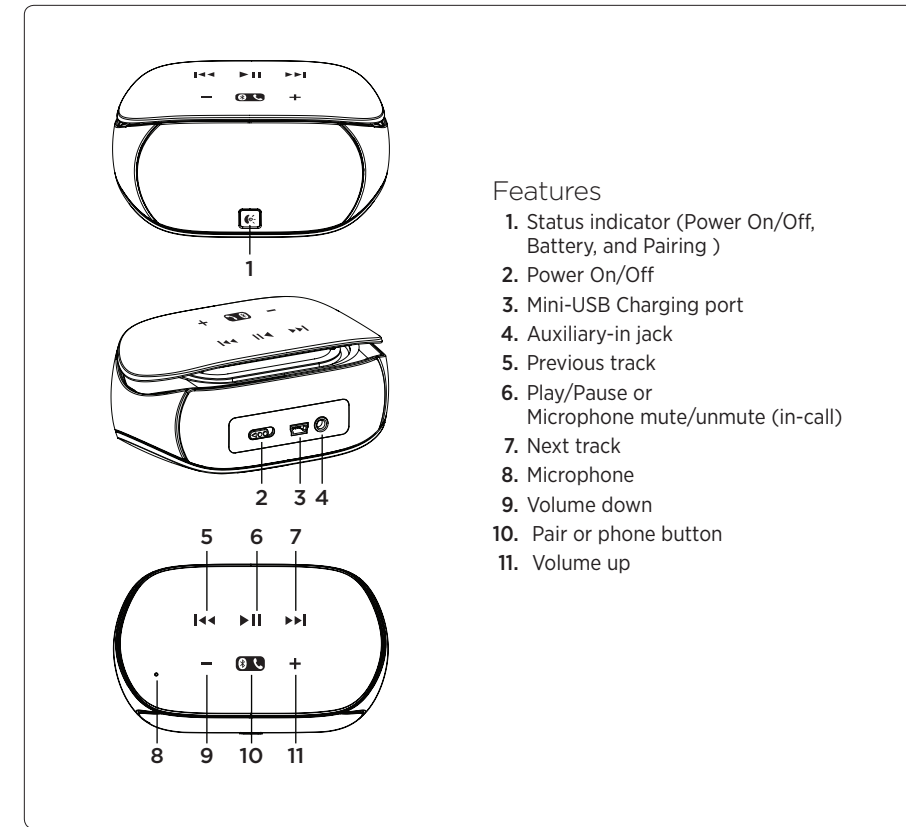
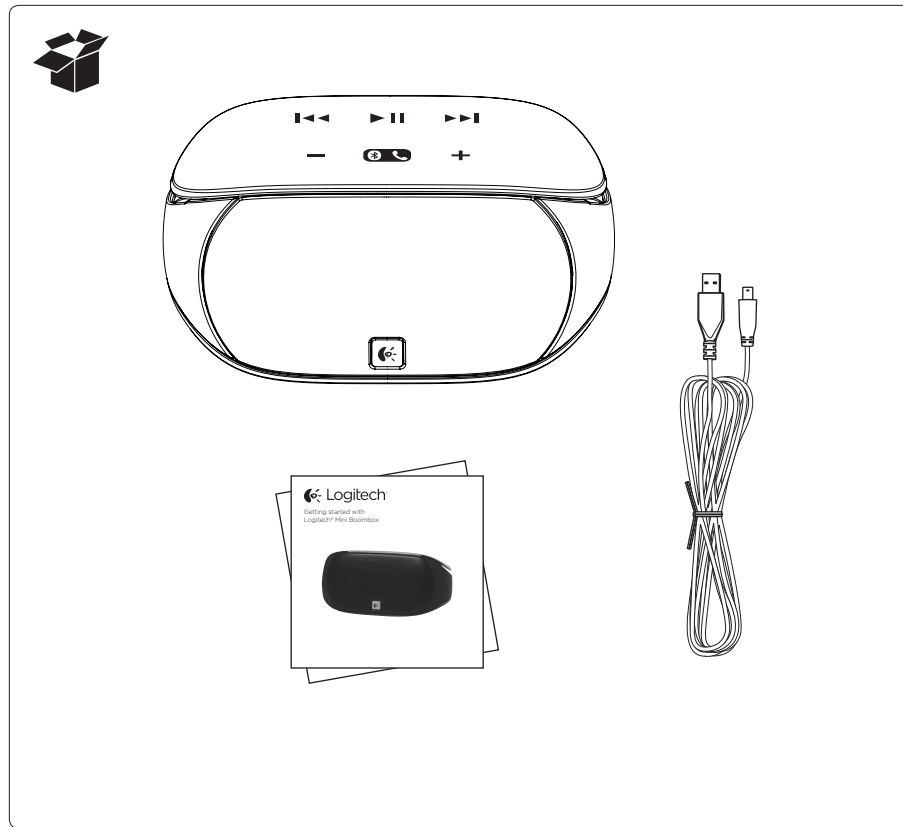




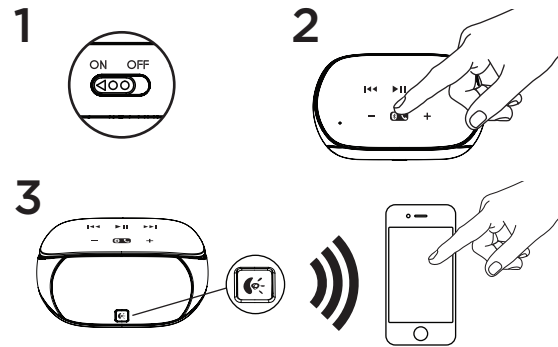
Getting started with  
Logitech® Mini Boombox



[www.logitech.com](http://www.logitech.com)

© 2011 Logitech. All rights reserved. Logitech, the Logitech logo, and other Logitech marks are owned by Logitech and may be registered. All other trademarks are the property of their respective owners. Logitech assumes no responsibility for any errors that may appear in this manual. Information contained herein is subject to change without notice.

620-004023.002



### Setup

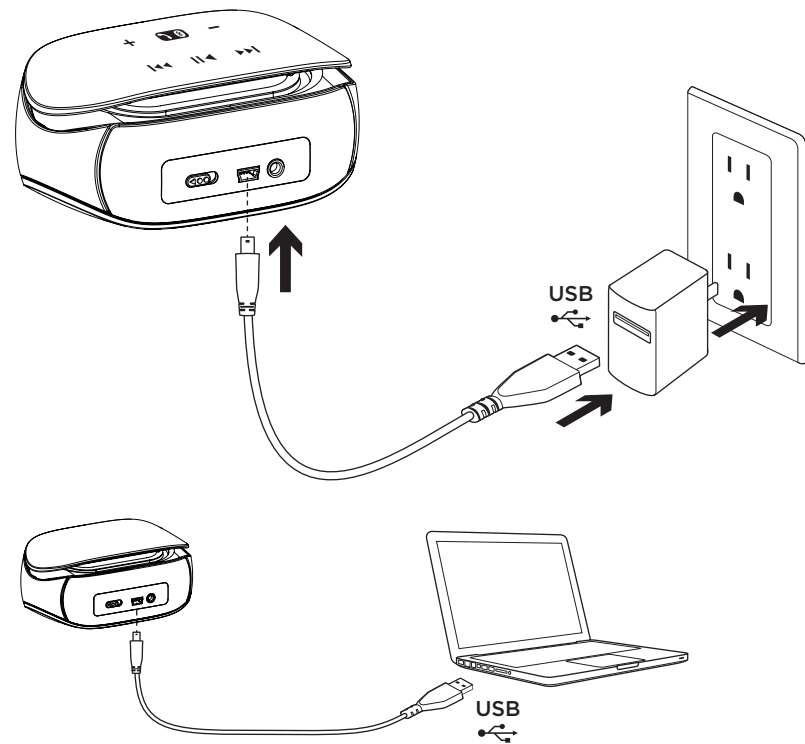
To play audio from a Bluetooth device, you need to pair the device with the speaker. You can pair up to eight devices.

1. On your Bluetooth device, turn on Bluetooth and scan for devices in its Bluetooth menu.
2. Turn on the speaker. When powering up for the first time, the speaker is discoverable for 2 minutes and is ready for pairing. The Status indicator blinks red and blue.
3. When "Mini Boombox" appears on the device list of your Bluetooth device, select the Mini Boombox. (If a pass code is requested, enter **0000**.) The Bluetooth status light turns solid blue after pairing is established. The speaker is ready to play music.

Note: If pairing times out (the Bluetooth status light stops blinking red and blue), press and hold the Pair or Phone button until the Bluetooth status light blinks red and blue again. Repeat step 3.

### Pairing additional Bluetooth devices

Press and hold the Pair or Phone button until the Bluetooth status light blinks red and blue. Repeat steps 1 and 3 above.



### Charging

About once a month, fully charge the speaker (about 4 hours).

1. Plug the charging cable into the speaker's charging port and the USB power adapter that came with your tablet device.
2. Plug the adapter into an AC outlet.

**Note:** You can also use a computer (with the power on) for charging. Plug the charging cable into the USB port.

### Status indicator:

- Blinking blue = Charging
- Solid blue = Fully charged
- Solid red = Low battery
- Blinking red = Very low battery

### Battery saving

The speaker enters power saving mode if no audio is played for 30 minutes.

Slide the power switch off and then on to wake the speaker.

### Troubleshooting

#### The speaker doesn't work or it won't pair

- Try moving your device closer.
- Is the speaker turned on and charged?
- Turn the speaker off and then on to wake it.
- Is Bluetooth enabled on your device or computer?
- Try repeating the setup procedure in this guide or pair with a different Bluetooth device.
- The speaker plays music from one device at a time. Unpair the device not being used. (Refer to your device documentation for help.) Pair a new device using the setup procedure.
- If pairing with a computer, specify the Logitech Mini Boombox as the audio out device on the computer.

#### Additional Help

For online help, go to [www.logitech.com/support/miniboombbox](http://www.logitech.com/support/miniboombbox)

[www.logitech.com/support/miniboombbox](http://www.logitech.com/support/miniboombbox)