



890 Harmony Remote

User Manual version1.1

Table of Contents

INTRODUCTION.....	1
GETTING TO KNOW YOUR HARMONY REMOTE.....	2
BEGINNING THE SETUP PROCESS.....	3
USING YOUR HARMONY REMOTE	4
USING THE REMOTE WITH THE RF WIRELESS EXTENDER.....	4
<i>Installing the RF Wireless Extender.....</i>	5
<i>Adding the RF Wireless Extender to the Z-Wave Network.....</i>	5
<i>Assigning Devices to the Harmony Remote and the RF Wireless Extender.....</i>	6
USING THE GLOW BUTTON.....	7
RECHARGING THE BATTERY.....	7
USING THE TILT SENSOR.....	7
SELECTING AN ACTIVITY.....	7
VIEWING THE STATUS AND NAVIGATION BARS.....	8
DISPLAYING HELP ON YOUR HARMONY REMOTE.....	8
<i>Types of Help Available.....</i>	9
<i>Using the Remote Assistant.....</i>	9
CONTROLLING INDIVIDUAL DEVICES.....	9
USING THE SMART BUTTONS.....	10
USING SYSTEM OPTIONS.....	10
CUSTOMIZING YOUR HARMONY REMOTE	11
CUSTOMIZING THE DISPLAY ON THE HARMONY REMOTE.....	12
<i>Adding your Favorite Channel Icons.....</i>	12
<i>Changing the Behavior of Buttons Within an Activity.....</i>	13
<i>Adding Custom-Labeled Buttons.....</i>	13
CHANGING THE SETTINGS FOR YOUR HARMONY REMOTE.....	14
LEARNING INFRARED (IR) COMMANDS.....	14
<i>Using the Infrared Sensor.....</i>	15
<i>Naming an Infrared Command.....</i>	15
GETTING ADDITIONAL HELP	16
<i>Finding Answers to Your Questions.....</i>	16
<i>Troubleshooting Your Harmony Remote.....</i>	16

Introduction

Congratulations on the purchase of your Harmony remote! This User Manual will introduce you to the basic online setup process, customizations and main features of your Harmony remote, and instructions on using the remote with a Harmony RF Wireless Extender.

If in doubt about how to set up your Harmony remote, follow the information and instructions using the Logitech Harmony remote software (also referred to as Harmony remote software).

The Harmony remote is an Internet-powered universal remote control. Your Harmony remote can control most devices that understand infrared (IR) signals.

The configuration of your Harmony remote is simple:

- You will be prompted to answer questions about your entertainment devices to create your own personal Harmony remote configuration.
- Your answers will provide us with a description of the entertainment devices you want to control, how they are set up, and your preferences for controlling them.
- If one of your devices is not in the Harmony remote's database, the Harmony remote software will learn about your device and add it to your configuration.
- Once you have told us about your devices, you will then be guided through setting up Activities. Creating Activities is simple: you will be prompted to indicate the devices you use within an Activity and how you want to control specific features, such as the volume, within that Activity.
 - An Activity is a set of commands the Harmony remote sends to your entertainment system to turn on the necessary devices.
 - Once you have selected an Activity, you are in Activity mode, and the functionality of each button on your Harmony remote is automatically configured for that Activity.
 - Additionally, the display buttons will give you access to other commands for that Activity, which cannot be set to the standard buttons.

Example

For the Watch Television Activity, the Harmony remote sends commands to your entertainment system to turn on the necessary devices so you can watch television. The remote will automatically be configured for the Activity based on the answers you selected during the online setup process for the Activity.

At the end of the setup process, you will have your own configuration loaded in your Harmony remote.

Use your Harmony remote software to:

- Customize any of your Harmony remote's features.
- Add more entertainment devices.
- Add more Activities.

Getting to Know Your Harmony Remote

Many of the Harmony remote's buttons are standard remote buttons. However, there are buttons and other hardware that may not be so familiar to you. The extra buttons and hardware give you access to the special features of the Harmony remote.



USB Connector: Connect one end of the USB cable to this connector and the other end to your computer so that you can download your configuration using the Harmony remote software.

OFF: Turns all devices off with one button press.

ACTIVITIES: Press Activities to view a list of Activities you have added. Press the display button next to the Activity you want and the Harmony remote will set up your entertainment system.

HELP: Asks you simple questions so that your Harmony remote can fix problems you are having within an Activity.

Display: Shows a list of your Activities and devices, help, infrared (IR) commands and any available listings.

Display Buttons: Use the buttons at the side of the display to select the corresponding command.

GLOW: Turns on and off the backlight on the Harmony remote.

PREV: Goes to previous television channel.

DEVICE: Lists all your devices on the display, and allows you to select and directly control any device.

MEDIA: In the Watch TV Activity, press this button to view your Favorite Channels on the display.

Left/Right Arrow: Allows you to view more options on the display.

Smart Buttons: While there is a default setting for the buttons in most Activities, you can customize these buttons to send different commands.

MENU: Gives you access to the menu system on a device, if you have a device with this feature.

EXIT: Exits from the Guide feature.

GUIDE: Gives you access to view program listings, if you have a device with this feature.

INFO: Gives you additional information on program listings, if you have a device with the Guide feature.

Infrared Learning Port: The Harmony remote uses this port to learn commands from your original remote.

Beginning the Setup Process

Once you have installed the Logitech Harmony remote software, connect your remote and you will be guided through a series of question-and-answer steps to complete each of the five main steps of the online setup process:

1. **Login Information:** Create your login information.
2. **Check Connection:** Ensures your computer and your Harmony remote are communicating properly.
3. **Set Up Devices:** Helps you provide us with information about the devices in your personal home theater system.
4. **Set Up Activities:** Helps you provide us with information about the way your devices work together to perform Activities (e.g. **Watch Television** Activity).
5. **Update Remote:** Updates your remote with your personal settings.

Note: When using the Harmony remote software, click **Help** to view specific help for the step you are at.

Using Your Harmony Remote

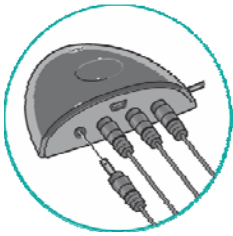
This section provides you with information that will help you use your remote.

Using the Remote with the RF Wireless Extender

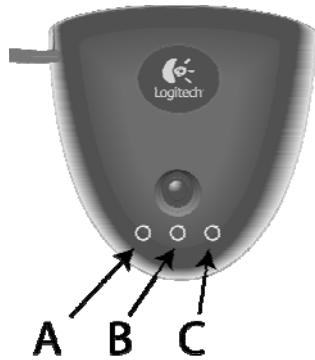
The Harmony RF Wireless Extender allows you to use the Harmony remote to control devices that are out of view (e.g. they are inside a cabinet).

Note: Update the RF Wireless Extender each time you make any changes to the configuration of your remote.

The RF Wireless Extender has four dual-head IR (infrared) emitters (one emitter can control two devices) that can be used to control up to eight devices that are out of extender's range.



The lights on the RF Wireless Extender provide users with important information, such as:

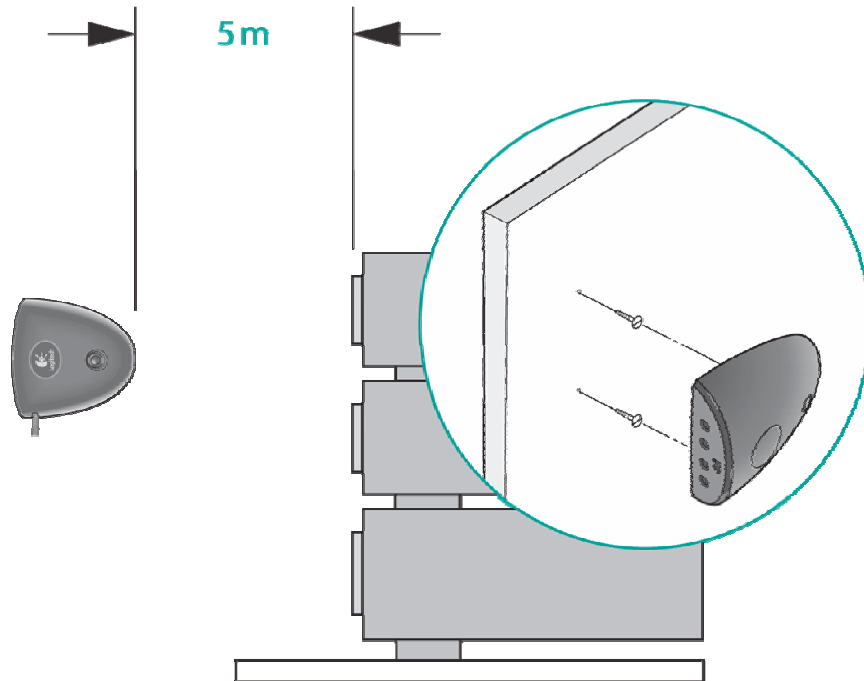


- Status (A)
 - Indicates that the RF Wireless Extender is sending commands.
- Power (B)
 - Indicates that the RF Wireless Extender is powered either by AC or USB.
- RF (C)
 - Indicates that the RF Wireless Extender is receiving RF signals.

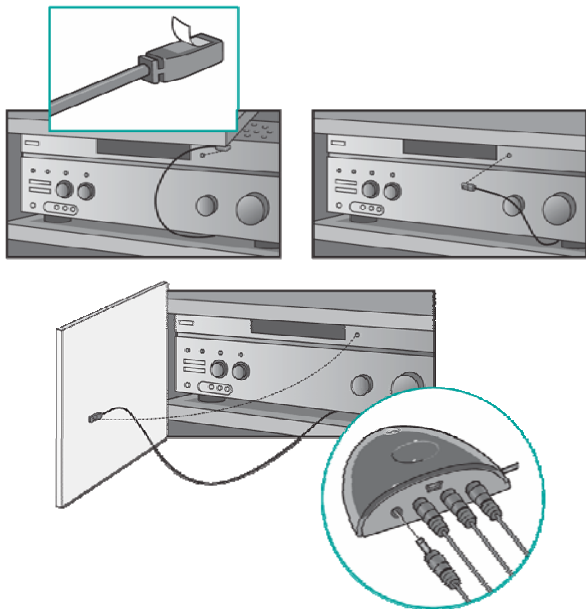
Installing the RF Wireless Extender

The extender can be wall-mounted or installed inside the cabinet where you devices are located.

Wall-Mounted



Cabinet



Adding the RF Wireless Extender to the Z-Wave Network

Anytime you update the remote, you must add the RF Wireless Extender to your Z-Wave network again. To add the extender to your Z-Wave network:

1. Take your remote to the RF Wireless Extender you want to add. Make sure the extender is plugged into a power outlet.

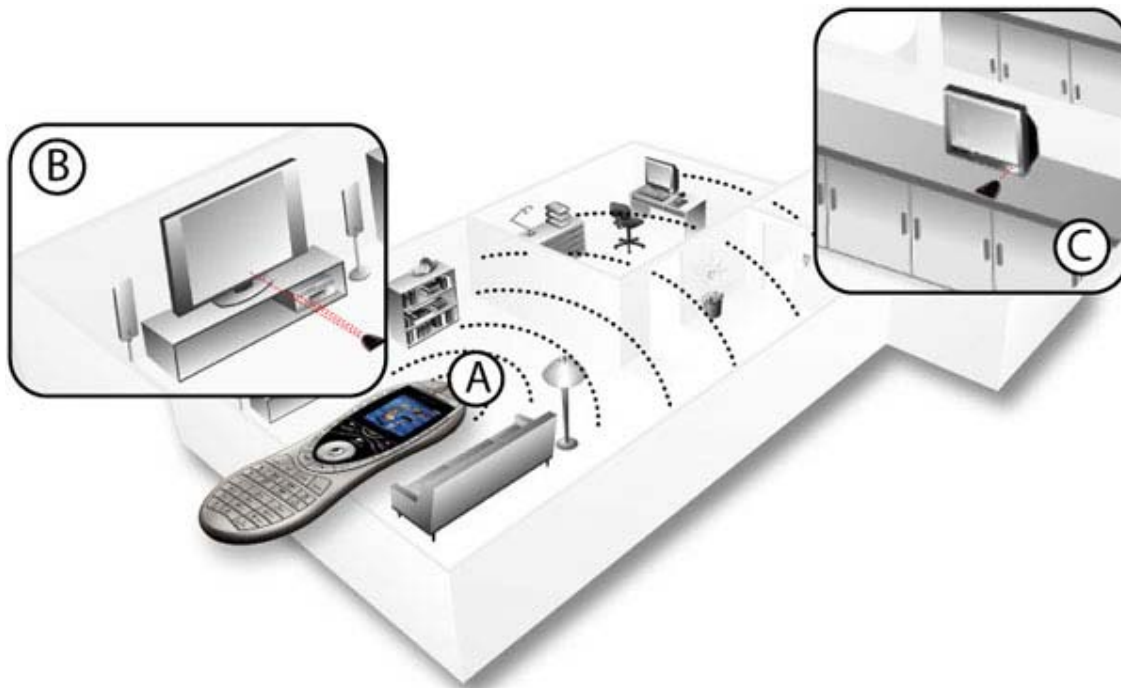
2. Press **Add** on the remote when you see a message reminding you to add an RF Wireless Extender to your network.
3. Press **Connect** on the RF Wireless Extender. By pressing **Connect** you will add the extender to your Z-Wave network.

Anytime you update the RF Wireless Extender you must add the extender to your Z-Wave network again. To manually add the extender to your Z-Wave network:

1. Take your remote to the RF Wireless Extender you updated. Make sure the extender is plugged into a power outlet.
2. Press the display button next to **System Options** on the remote's display.
3. Press **Z-Wave Setup**.
4. Press **Connect to RF Extender**.
5. Press **Connect** on the RF Wireless Extender and follow the instructions on the remote.

Assigning Devices to the Harmony Remote and the RF Wireless Extender

You can assign either the Harmony Remote or the RF Wireless Extender to control your devices.



Controlling a Device With the RF Wireless Extender:

If you have set the RF Wireless Extender to control a device, the remote will send RF (radio frequency) signals (see A) to the RF Extender, which will then convert the signals to IR and send the signals to the device. Controlling devices using the RF Extender means you can control the devices even if they are behind closed doors (e.g. a cabinet) or in a different room (see B and C).

Controlling a Device With the Remote:

If you have set the remote to control a device, the remote will use IR (infrared) signals to control the device. In order for the remote to control the device, there must be a direct line of sight between the signal sent by the remote and the device receiving the signal (see A).

Using the Glow Button

Press the **Glow** button to light up or turn off the display backlight. To determine the length of time the backlight stays on:

1. From **Home** in the Harmony software, click **Remote Preferences**.
2. Click **Settings**.

Recharging the Battery

Place your remote in the base station to charge. While the remote's battery is charging:

- The display and its backlight, and the keypad backlight remain on.

Note: Press the GLOW button to turn the backlight off.

- The battery level icon in the status bar flashes when the battery is still charging or will display a full battery level when charging is complete.



When the battery is low, the display will flash a message to remind you to charge the battery.

Using the Tilt Sensor

Note: Whenever you pick up the remote from the base station, or replace it in the station, you will hear a beep.

When you pick up the remote slightly tilted, the display will automatically turn on and the keypad light up. To enable/disable these features:

1. From **Home** in the Harmony software, click **Remote Preferences**.
2. Click **Settings**.

Selecting an Activity

View the Activities you have added by pressing the **Activities** button. The display will then list the Activities you have added. Press the corresponding display button next to the Activity you want to start.



As a default, when you select an Activity, you will see a message on the remote's display reminding you to keep the remote pointed at your entertainment system while the Activity starts. This helps ensure that all infrared (IR) signals are properly sent.

To turn on/off the "Starting Activity" message:

1. From **Home** in the Harmony software, click **Remote Preferences**.
2. Click **Settings**.

Viewing the Status and Navigation Bars

The status bar provides users with important information such as:



- **A:** Date and time
 - To set the time-display format click **Remote Preferences** (from home in the Harmony software) and then click **Settings**.
- **B:** Indicator if the USB is attached
- **C:** Indicator when infrared (IR) commands are being sent to your devices
- **D:** Battery indicator (battery's power)
- **E:** Activity you are in (if applicable)

The navigation bar displays information such as:

- **F:** The number of screens available in a menu, and the screen currently displayed

Displaying Help on Your Harmony Remote

From time to time when you select an Activity, the Activity may not work. This can happen when the Harmony remote sends many infrared commands to set up all your devices for an Activity, but one or more devices are not receiving some commands. The Harmony remote is then "out of sync" with your devices (e.g. it thinks one of your devices is on, but it is turned off). Some of the reasons the Harmony remote can become "out of sync" with your system are:

- Someone walks between the Harmony remote and your entertainment system while an Activity is starting.
- You point your Harmony remote away from your system while an Activity is starting.
- There is an object blocking the line-of-sight between your Harmony remote and the system.
- You are very far away from your entertainment system.

You will need to use the **Help** button on your Harmony remote to resynchronize the remote with your devices. Before resynchronizing, ensure the cause of the problem has been addressed.

Example

Remove all obstructions so that the entertainment devices can receive the infrared commands from the Harmony remote.

Note: If your devices are no longer responding consistently to your Harmony remote, but were doing so before, you may need to recharge the battery.

To resynchronize:

1. Press the **Help** button.



2. Answer the questions on the remote's display by selecting **Yes** or **No**. If you answer no to any question, the Harmony remote will resend the necessary command and ask you the same question again.

When you are done, the Harmony remote will be "in sync" with your devices again.

Types of Help Available

You can customize the **Help** button on your Harmony remote to provide one of the following types of help:

- **Smart help**
Asks questions about the devices that are on during a specific Activity.
- **Full help**
Asks questions about all the devices in your system.

Select **Full help** if you find devices aren't being controlled the way you want them to and the help on the remote is not asking you questions about these devices.

To select the type of help you want:

1. From **Home** in the Harmony software, click **Remote Preferences**.
2. Click **Settings**.

Using the Remote Assistant

Extra help is available from your remote by turning on the **Remote Assistant**.

To turn on/off this feature using the Harmony remote software:

1. From **Home** in the Harmony software, click **Remote Preferences**.
2. Click **Settings**.

While the **Help** button helps you solve device problems within an Activity, the **Remote Assistant** teaches you how to use your Harmony remote. The following is an example of the type of help the **Remote Assistant** offers:

Example

If any devices are not set up correctly, press "Help" now.

To temporarily turn on/off this feature via the Harmony remote:

1. Press **System Options** on the remote.

Controlling Individual Devices

Press **DEVICE** to enter device mode. Device mode gives you access to all the possible commands for each device included in your Harmony remote configuration. To access device mode you do not need to be in an Activity. However, you should never need to use Device mode during normal use of your Harmony remote. This mode should only be used to send a specific command to a specific device.

You can eliminate the use of device mode by customizing your Activities.

Example

You can put commands on the display or customize specific buttons for the commands.

See [Customizing Your Harmony Remote](#).

At any time, press **DEVICE** to switch into Device mode. Once in this mode, the Harmony remote will display a list of all the devices you have in your configuration. Select a device from the list and the Harmony remote will only control the device features for the device.

Example

If you choose Television as the device, the number, volume and channel buttons will all control your television.

Press **DEVICE** again to return to exit Device mode.

Using the Smart Buttons

While there is a default setting for the buttons in most Activities, you can customize these buttons to send different commands. See [Changing the Behavior of Buttons Within an Activity](#).

**Using System Options**

Press **System Options** on your Harmony remote to:

- Set the time and date.
- Turn the slide show on/off.
- Temporarily turn the **Remote Assistant** on/off (available only if you selected the option under **Remote Preferences** on home in the Harmony software—see [Using the Remote Assistant](#).)

Customizing Your Harmony Remote

All customization of your Harmony remote is done from Home in the Harmony remote software:



Use the Harmony remote software to:

Troubleshoot

- Click **Troubleshoot** when your Harmony remote isn't controlling your system correctly.

view Activities

- Click **Activities** to add or delete Activities.
- Click an Activity icon to change the specific settings (e.g. the name of an Activity) for an Activity.

Example

To have more than one Activity of a given type (e.g. If you have both a cable converter and a satellite receiver, you can add a second **Watch Television** Activity) click **Add an Activity**. When you're done, rename the Activities to help you distinguish between them (e.g. For the **Watch Television** Activity you could rename one from "Watch Television" to "Watch Cable" and the other to "Watch Satellite".)

view Devices

- Click **Devices** to add or delete entertainment devices.
- Click a device icon to change the specific settings for a device you have already set up.

view Remote Preferences

- Click **Remote Preferences** to change the remote's settings.

Get Support

- Click **Get Support** to view a list of support tools and services we offer.

Update Remote

- Click **Update Remote** after you have made changes your configuration or settings. This will ensure you have the latest configuration and settings on your Harmony remote.

Customizing the Display on the Harmony Remote

This section provides information that will help you to customize the commands and options listed on the Harmony remote's display.

The LCD screen resolution on the Harmony Remote is 160 x 128 pixels.

The Harmony remote comes with a set of defaults, which you can change to make the display look the way you want it to:

- Select or add your own backgrounds for the display.
- Add your icons for your favorite channels (you can upload your own icons up to a maximum of 160 KB (file size), and 24-bit .png, .bmp, .jpg, or .gif .)
- Select one of the default themes.
 - A theme consists of a font style, background, layout, and icons (for Activities and Devices)—choose a theme that best suits you.
 - Layout is the number of selections (4 or 8) displayed on the display
- Add your own slide show to the display.
 - You can use the default backgrounds or your own background images to create your own slide show. The slide show displays while the remote is in the base station. See [Using System Options](#) for more information on turning the slide show on and off.

To make the Harmony remote's display look the way you want it to:

1. From **Home** in the Harmony software, click **Remote Preferences**.
2. Click an option to make your changes to the theme, background, or slide show.

Adding your Favorite Channel Icons

You can customize the display for your Favorite Channels menu by adding your own icons and setting an icon to appear next to one of your Favorite Channels.

To add your favorite channels and icons to the Harmony remote display:

1. From **Home** in the Harmony software, click **Activities**
2. Click an Activity.

You can change the Favorite Channel settings for these Activities:

- Watch Television
 - Record to VCR
 - Watch TiVo
 - Watch PVR
 - Watch ReplayTV
 - Listen to Satellite
 - Watch My Tv
3. Click **Favorite Channels**.

To add a custom-labeled button for an Activity:

1. From **Home** in the Harmony software, click **Activities**.
2. Click an Activity.
3. Select Change the Behavior of Buttons.
4. Under the **Custom Button Label** column, type the name for the button label you would like to appear on the display.
5. Select a command from the drop-down list in the appropriate device column, next to the name of the button you want to set.

Custom-labeled buttons are displayed on the Harmony remote's display from left to right, top to bottom.

Add a custom-labeled button to send a command to more than one device at a time:

1. From **Home** in the Harmony software, click **Activities**.
2. Click an Activity.
3. Select Change the Behavior of Buttons.
4. Select a command from the drop-down list in each of the required device columns next to the name of the button you want to set.
5. Add as many custom-labeled buttons as you like. Click **More Custom Labels** to add labels one at a time.

Changing the Settings for your Harmony Remote

From **Home** in the Harmony software, click **Remote Preferences** to change the remote's settings:

- Turn on/off Help on the remote/Remote Assistant (for additional information, see [Displaying Help on Your Harmony Remote.](#))
- Set the backlight timing (for additional information, see [Using the Tilt Sensor](#) and [Using the Glow Button.](#))
- Set the time-display format.
- Show/Hide the "Starting Activity" message (for additional information, see [Selecting an Activity.](#))
- Turn on/off the tilt sensor (for additional information, see [Using the Tilt Sensor.](#))

Learning Infrared (IR) Commands

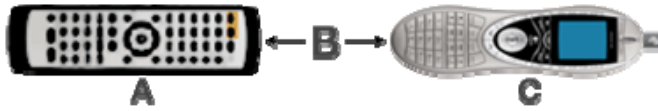
The Harmony remote can learn infrared commands from other remote controls, and should only be used in situations where the Harmony remote's infrared database does not already contain an infrared command you would like to use.

Determine the device you would like to send the infrared command to:

1. From **Home** in the Harmony software, click **Devices**.
2. Click a device.
3. Select Learn infrared commands.

Using the Infrared Sensor

The Harmony remote has an infrared sensor at the end opposite to the USB connector. The Harmony remote uses this sensor to learn commands from original device remotes.



- **A:** Your original remote
- **B:** Distance between remotes: 5-10 cm (2"-5") apart
- **C:** Your Harmony remote

The following steps outline what happens when you press a button on your original remote control:

1. The infrared sensor on the Harmony remote learns the infrared signal.
2. The Harmony remote uploads it via the USB cable (and your computer's internet connection) to the Harmony database.
3. The Harmony remote software will try to find a matching pattern for the infrared signal.
4. If no pattern is found, the signal will be stored as-is in its original format.
5. If a pattern is found, the Harmony remote software converts the signal into a format for convenient storage.

Either way, the signal is then available for you to assign to a button on your Harmony remote.

Naming an Infrared Command

When you teach an infrared command to the Harmony remote, give the command a name. This way you can refer to this command by name in various locations of the online setup process. It is best to use the default names listed on the **Learn infrared commands** step so that automatic button function assignments can be applied to your Harmony remote.

Example

If you teach the volume button infrared commands from your original remote control, name them "VolumeUp" and "VolumeDown" (i.e. with no space, and capitalization as shown). The remote software looks for commands with these names to automatically assign them to the volume up and down buttons on the Harmony remote.

Naming Conventions

When naming a command for which there is no default name on the **Learn infrared commands** feature, use the following naming conventions to make button assignment and sharing infrared commands easier:

- Do not use spaces or special characters such as /, & or * in the name.
- Capitalize the start of words (e.g. NextDisc, ModeDigital).
- Start the command name with its main function (e.g. VolumeRearUp, VolumeRearDown, VolumeFrontUp, VolumeFrontDown). This helps group related commands in lists.
- For infrared commands that select inputs (e.g. on a stereo receiver), start with the prefix "Input". Do not name the input based on what you have connected to your device, rather name it based on what it is called on the front of the device, or on the remote control (e.g. InputAux, InputVideo1, InputTape, InputDVD, InputVCR).


Getting Additional Help

The Harmony remote provides you with several features to assist you with:

- finding answers to your questions quickly and easily
- troubleshooting the setup and customization process

Finding Answers to Your Questions

The help you find answers to your questions quickly and easily, consult any of the following tools:

Feature	Description
Search	A support tool that enables you to do a keyword search.
FAQs (Frequently-Asked Questions)	A searchable list of customer questions, with answers provided by Harmony's support center.
User Manual	The User Manual explains the concept of your Harmony remote and provides information about setting up and using the remote.
Help button	When running the Harmony remote software, click this button for help specific to the step you are at.
Help button (remote) 	Asks you simple questions so the Harmony remote can automatically fix problems you are having with an Activity.

Troubleshooting Your Harmony Remote

In addition to the tools listed under **Finding Answers to Your Questions**, you can use the following tool to troubleshoot your Harmony remote:

Feature	Description
Troubleshoot	To be used when the Harmony remote is not controlling your system correctly.

If you cannot find the answer to your question(s) or troubleshoot your problem(s), contact your Harmony Support Team.