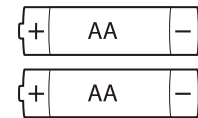
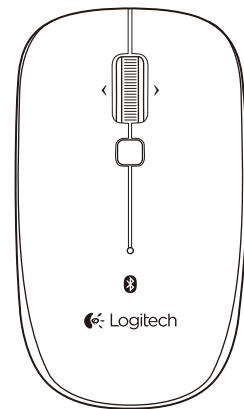


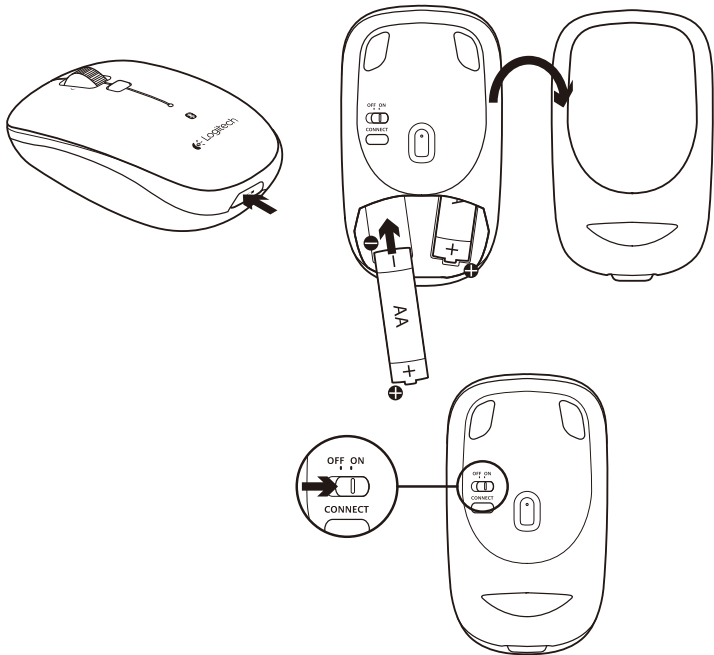


## Logitech® Bluetooth® Mouse M558

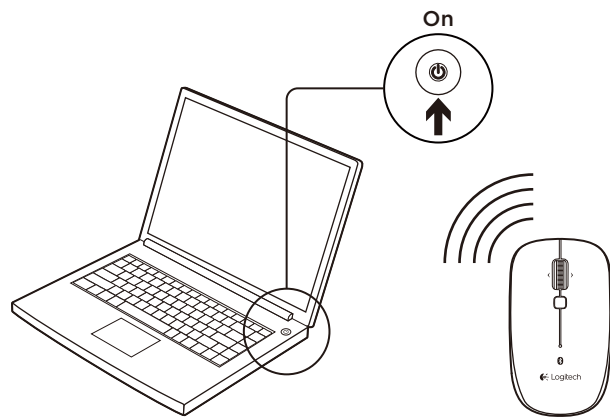
### Setup Guide



# 1



# 2



### English

Pair the M558 to your Mac® using *Bluetooth*

**1.** Press the Bluetooth connect button on the bottom of the mouse to enter discovery mode.

The blue LED on top of the mouse will blink while the mouse is in discovery mode.

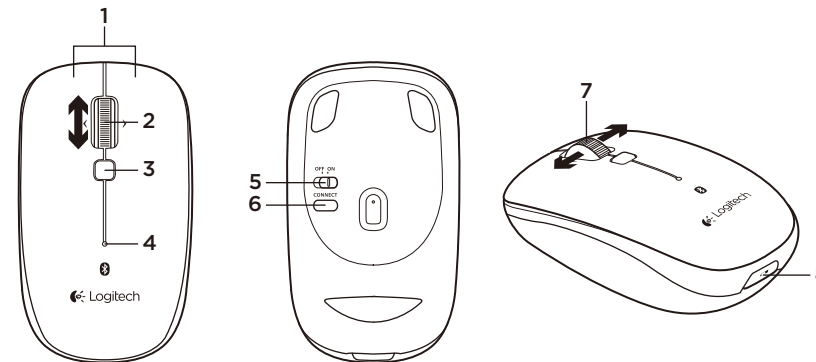
**2.** Go to System Preferences > Bluetooth

**3.** Choose “Logitech M558” from the Devices menu.

**4.** Click “Pair”

Note: If you have an earlier version of Mac OS (10.8 or before), click on the (+) button to add a device.

**5.** When pairing is complete, the blue LED on top of the mouse lights steadily blue for 30 seconds.



### English

#### Features

1. Left and right mouse buttons
2. Scroll wheel
3. Mission Control
4. Battery and *Bluetooth* LED  
Blinks blue when pairing and red when battery power is low.
5. ON and OFF switch
6. *Bluetooth* connect button
7. Tilt wheel—horizontal scroll
8. Battery door release

### English

#### Troubleshooting

##### Mouse not working:

1. Turn mouse ON-OFF-ON.
2. Try a different surface.
3. Check battery installation and replace if expired.
4. Verify that *Bluetooth* is enabled on your Mac.
5. Repeat Step 2 (Connect the M558 to your Mac using *Bluetooth*) to pair your *Bluetooth* mouse. Refer to your computer manufacturer's documentation for more information about using *Bluetooth*.

If you have more questions about your mouse, visit [www.logitech.com/support/m558](http://www.logitech.com/support/m558)

[www.logitech.com/support/m558](http://www.logitech.com/support/m558)

Australia.....1-800-025-544  
Hong Kong.....800-966-992