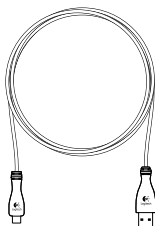
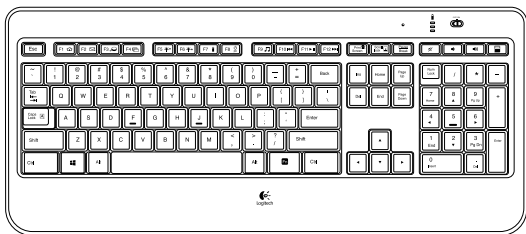


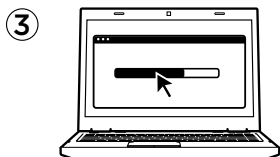
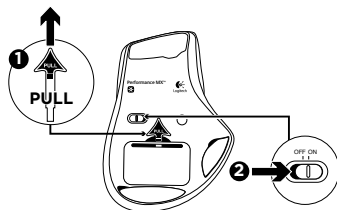
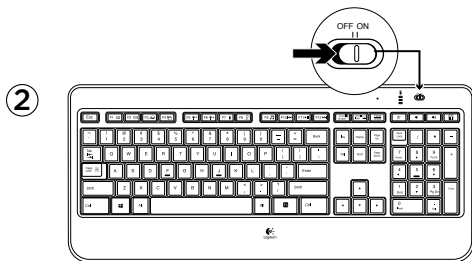
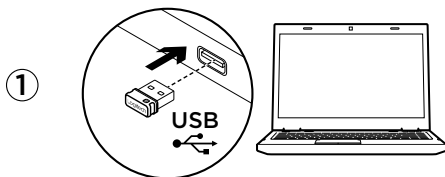


Logitech® Wireless Performance Combo MX800
Setup Guide



English.	4
www.logitech.com/support 	11

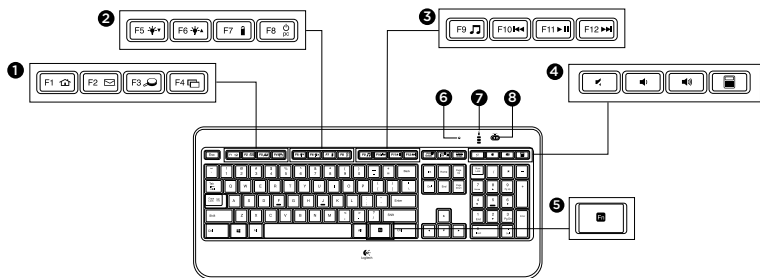




Software installation

www.logitech.com/download/mx800

Keyboard features



1. Application zone

- FN** + F1 Launch Internet browser
- FN** + F2 Launch e-mail application
- FN** + F3 Launch Windows Search*
- FN** + F4 Flip†

2. Convenience zone

- FN** + F5 Backlight down by 25%
- FN** + F6 Backlight up by 25%
- FN** + F7 Battery check
- FN** + F8 Sleep mode

3. Multimedia navigation zone

- FN** + F9 Launch media
- FN** + F10 Previous track
- FN** + F11 Play/Pause
- FN** + F12 Next track

4. Multimedia volume zone

- Mute
- Volume down
- Volume up
- Calculator

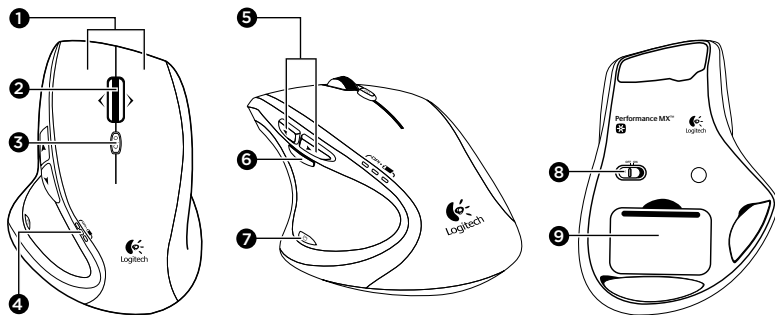
5. **FN** key

- 6. Automatic light sensor (ALS)
- 7. Battery status indicator
- 8. Keyboard power switch

* One Touch Search if the SetPoint® software is installed.

† Application Switcher if the SetPoint® software is installed.

Mouse features



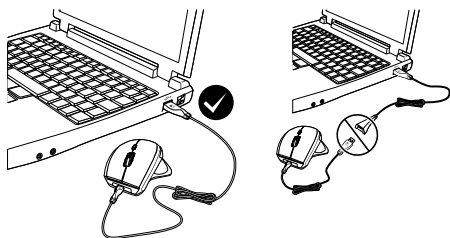
1. Left and right buttons
2. Scroll wheel
 - Press wheel down for middle click
 - Press wheel left to scroll left
 - Press wheel right to scroll right
3. Scroll wheel mode shift button
 - Press to shift between hyper-fast (free spinning) and precision (click-to-click) scrolling
4. Battery indicator
5. Back and forward button
6. Zoom button
7. Application button
8. On/off switch
9. Battery door release

Recharging

Recharging the mouse

To charge your mouse, plug the charging cable into a powered USB port. Recharge your mouse when the battery indicator blinks red.

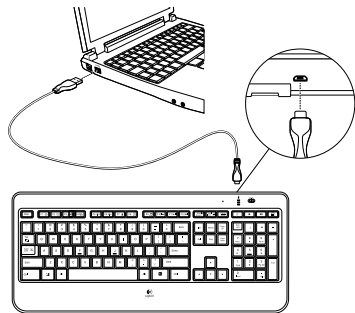
Do not use the receiver extender cable for recharging. Use only AA NiMH replacement batteries (1800 mAh minimum).



Recharging the keyboard

Typically, you can expect about 10 days of battery life before you will need to recharge the keyboard.* If the backlighting level is set to 100%, you have about 15 hours of battery life.

To recharge the keyboard, connect it to your computer using the USB recharging cable. A full battery recharge takes about 5 hours and only 3 hours if the keyboard has been switched off.



* Battery life varies with usage, backlighting level, and computing conditions.
Heavy usage usually results in shorter battery life.

Unifying

Logitech® Unifying technology connects up to six compatible Logitech mice and keyboards to the same receiver, using only one USB port for multiple devices.

To learn more, visit:

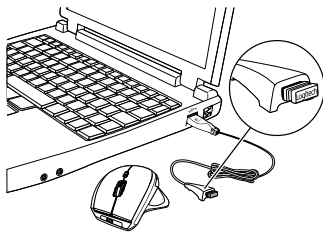
www.logitech.com/support/unifying

Troubleshooting

Mouse

No pointer movement?

1. Slide the mouse's Off/On switch to Off and then On. The mouse's battery status indicator LEDs should light up.
2. Confirm that the mouse is charged and battery polarity is correct. The battery status indicator is red when the battery is low.
3. Try plugging the Unifying receiver into another USB port.
4. Try reconnecting the mouse and Unifying receiver using the Logitech Unifying software (see the Unifying section).



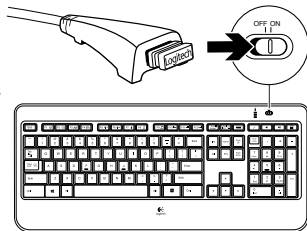
Erratic pointer movement or missed button clicks?

1. Remove metallic objects between the mouse and Unifying receiver.
2. If the Unifying receiver is plugged into a USB hub, try plugging it directly into your computer.
3. Move the Unifying receiver closer to the mouse by using the included receiver extender cable.

Keyboard

Keyboard not working?

1. Slide the keyboard's Off/On switch to Off and then On. The keyboard's battery status indicator LEDs should light up.
2. Confirm that the keyboard is charged. The battery status indicator is red when the battery is low.
3. Try plugging the Unifying receiver into another USB port.
4. Move the Unifying receiver closer to the keyboard by using the included receiver extender cable.
5. Try reconnecting the keyboard and Unifying receiver using the Logitech Unifying software (see the Unifying section).
6. Restart the computer.



www.logitech.com/support/mx800



Australia 1-800-025-544

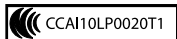
New Zealand 0800-447-361

M/N:C-U0007

Rating: 5V --- 100mA

Approval No.: ETA-418/2010/WRLO

CMIIT ID: 2010DJ0355



DZL-C-U0007



Z855

N231



MADE IN CHINA



www.logitech.com

© 2014 Logitech. All rights reserved. Logitech, the Logitech logo, and other Logitech marks are owned by Logitech and may be registered. All other trademarks are the property of their respective owners. Logitech assumes no responsibility for any errors that may appear in this manual. Information contained herein is subject to change without notice.

620-005796.003