



Ultrathin

Magnetic clip-on keyboard cover
For iPad Air

iK1060 磁力夹式超薄键盘盖
适用于 iPad Air



Setup Guide | 设置指南

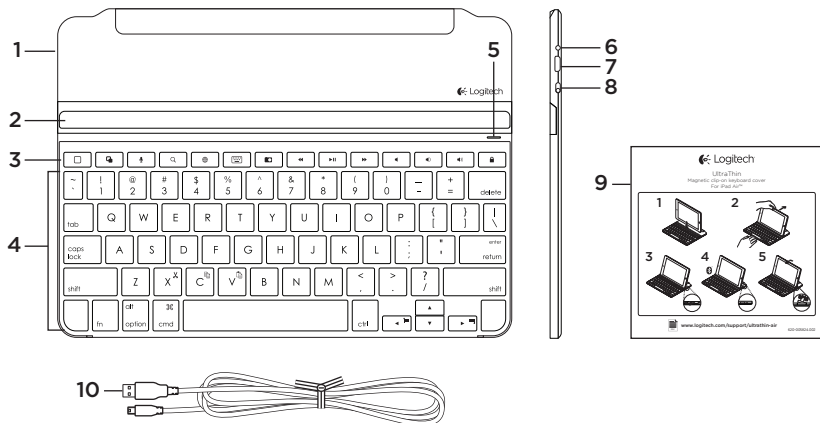


Contents / 目录

English.	3	简体中文	12
------------------	---	----------------	----

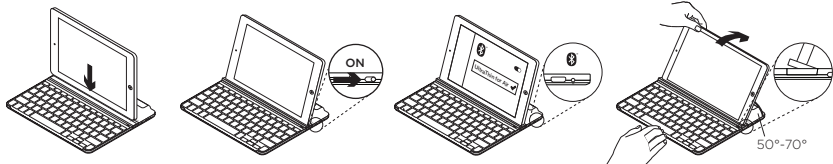
www.logitech.com/support/ultrathin-air

Know your product



1. Protective cover
2. iPad® holder
3. Hot keys
4. Keyboard
5. Bluetooth® and battery status light
6. Bluetooth connect button
7. Micro-USB charging port
8. On/off switch
9. Documentation
10. Micro-USB charging cable

Set up your product

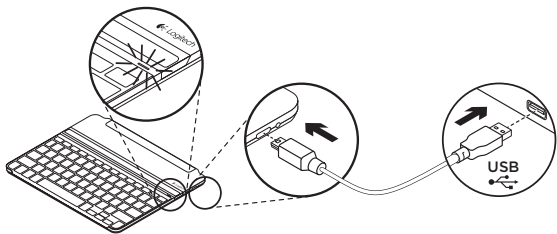


1. Place your iPad into the slot in the Keyboard Cover.
2. Turn on the Keyboard Cover:
 - Bluetooth discovery starts automatically and continues for 15 minutes. The Status light blinks blue.
 - If the Status light briefly turns red, charge the batteries. For more information, see “Charge the batteries.”
3. Establish Bluetooth connection:
 - Make sure your iPad's Bluetooth feature is on. Select Settings > Bluetooth > On.
 - Select “Ultrathin for Air” on your iPad's Devices menu. Bluetooth connection completed.
4. Tilt your iPad to suit your viewing angle. Multiple angles are available to select, from 50° to 70°.

Note:

 - You will need to apply downward pressure when you tilt your iPad.
 - The maximum weight that can be loaded onto the slot is 5kg.

Charge the batteries



1. Plug one end of the micro-USB cable into the charging port, and the other end into a USB port on your computer.

Alternatively you can use a USB charger, such as that provided with your iPad, providing the power output rating is 5V and at least 500mA.

The status light blinks green as the battery charges.

2. Charge the batteries until the Status light turns solid green.

Battery information:

- A fully charged battery provides about 3 months of power when the Keyboard Cover is used about two hours a day.
- Charge the batteries when the Status light briefly turns red after the Keyboard Cover turns on.
- When not in use, turn off the Keyboard Cover to conserve battery power.
- The Keyboard Cover enters sleep mode if powered on and not used. To exit sleep mode, press any key.

Hot keys



Home = iPad Home screen



Switch applications



Siri®

Use your voice to send messages, make calls, schedule meetings, and more



Search

Use your voice to send messages, make calls, schedule meetings, and more



Switch language

Switches the keyboard language



Virtual keyboard

Shows/hides the virtual keyboard



Screen Shot



Previous track



Play/Pause



Next track



Mute



Volume down



Volume up



Lock screen

Locks or unlocks the iPad screen

Function keys



Fn + X = Cut



Fn + C = Copy



Fn + V = Paste



Fn + Left cursor = Select left

Selects text on the left, word by word



Fn + Right cursor = Select right

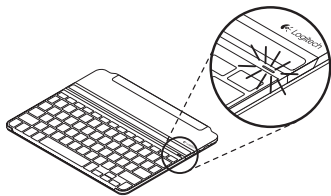
Selects text on the right, word by word

Note:

- To select a function key, press and hold the Fn key, and then press the key indicated above.

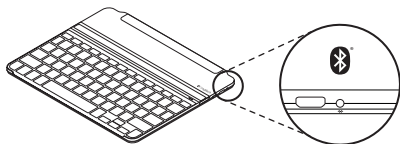
Use your product

Status light indications



Light	Description
Blinking green	The battery is charging.
Solid green	The battery is fully charged (100%).
Red	Battery power is low (less than 20%). Recharge the battery.
Blinking blue	Fast: The keyboard cover is in discovery mode, ready for pairing. Slow: The keyboard cover is trying to reconnect to your iPad.
Solid blue	Bluetooth pairing or reconnection is successful.

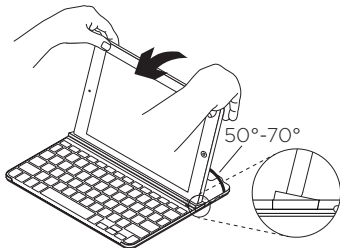
Connecting to a different iPad



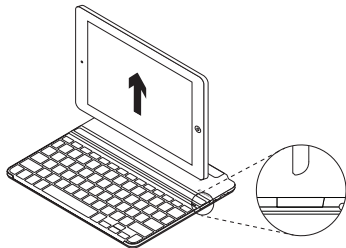
1. Place the new iPad into the slot in the Keyboard Cover.
2. Make sure the Keyboard Cover is turned on.
3. Check that your iPad's Bluetooth feature is on. Select Settings > Bluetooth > On.
4. Press the Bluetooth Connect Button on the Keyboard Cover. The Keyboard Cover is discoverable for 3 minutes.
5. Select "Ultrathin for Air" on the iPad's Devices menu. Bluetooth connection completed.

Detaching your iPad

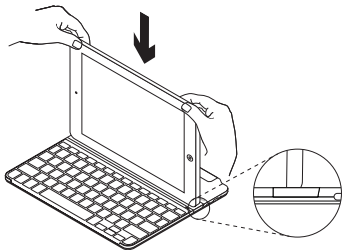
1. Pull back: Tilt your iPad backwards until it is vertical:



3. Lift iPad: Lift your iPad out of the Keyboard Cover vertically:

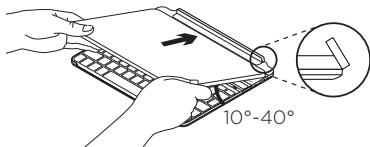


2. Push down: Apply downward pressure to ensure that the slot is completely flat:

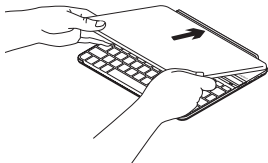


Storing your iPad for travel

1. Slide your iPad towards the hinge at the back of the Keyboard Cover. As your iPad gets close to the rear hinge, it pops up:

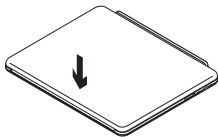


2. Attach your iPad to the rear hinge:



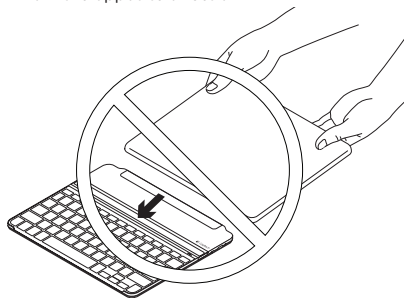
3. Lower your iPad down on to the Keyboard Cover until it closes.

A magnetic clip holds the iPad in position:

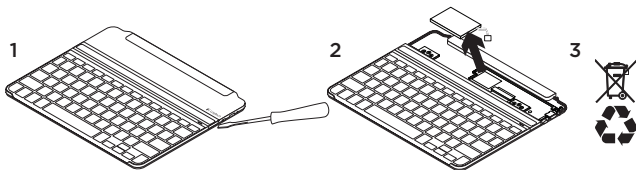


Note:

- **DO NOT** try to slide your iPad into the hinge from the opposite direction:



Battery disposal at product end of life



1. Pry off top cover of keyboard with screwdriver.
2. Detach battery from circuit board and remove battery.
3. Dispose of your product and its battery according to local laws.

Troubleshooting

The Keyboard Cover does not work

- Press any key to wake the Keyboard Cover from sleep mode.
- Turn the Keyboard Cover Off and then back On.
- Recharge the internal batteries. For more information, refer to “Charge the batteries.”
- Re-establish the Bluetooth connection between the Keyboard Cover and iPad:
 - Verify that your iPad’s Bluetooth feature is turned on.
 - Choose “Ultrathin for Air” from the Devices menu on your iPad. The Status light briefly turns blue after the Bluetooth connection is made.

My iPad doesn’t fit into the slot

- Make sure you are inserting your iPad on its side into the slot. The Keyboard Cover doesn’t support portrait mode.

Visit Product Central

There’s more information and support online for your product. Take a moment to visit Product Central to learn more about your new Keyboard Cover.

Browse online articles for setup help, usage tips, or information about additional features.

Connect with other users in our Community Forums to get advice, ask questions, and share solutions.

At Product Central, you’ll find a wide selection of content:

- Tutorials
- Troubleshooting
- Support community
- Software downloads
- Online documentation
- Warranty information
- Spare parts (when available)

Go to:

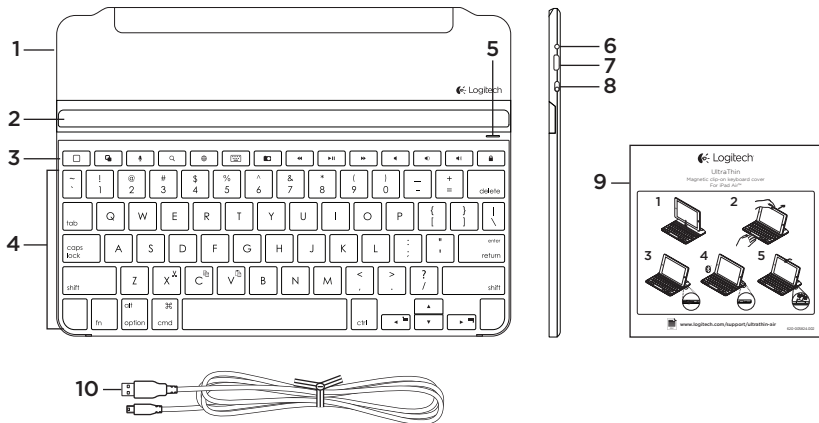
www.logitech.com/support/ultrathin-air

What do you think?

Thank you for purchasing our product.
Please take a minute to tell us what you think of it.

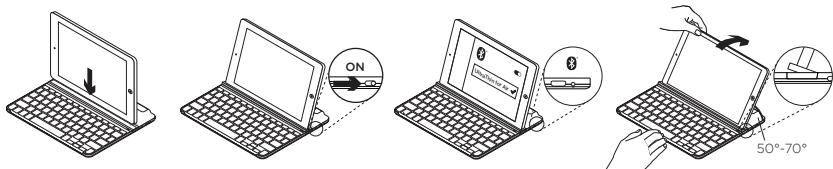
www.logitech.com/ithink

了解您的产品



1. 保护盖
2. iPad 支架
3. 热键
4. 键盘
5. 蓝牙® 和电池状态指示灯
6. 蓝牙连接按钮
7. 微型 USB 充电端口
8. 开启/关闭开关
9. 文档
10. 微型 USB 充电连接线

设置您的产品

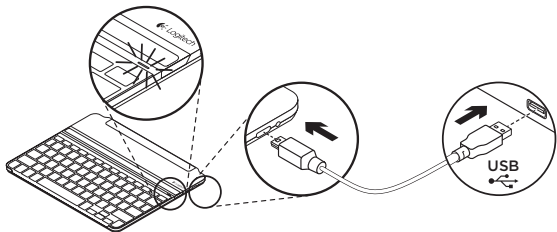


1. 将 iPad 插入键盘盖的插槽中。
2. 打开键盘盖：
 - 蓝牙搜索功能自动开启，将持续 15 分钟。状态指示灯将闪烁蓝灯。
 - 如果状态指示灯短暂变为红灯，请为电池充电。有关详细信息，请参见“为电池充电”。
3. 建立蓝牙连接：
 - 确保 iPad 的蓝牙功能已开启。依次选择：“设置” > “蓝牙” > “开启”。
 - 在 iPad 的“设备”菜单上选择“Ultrathin for Air”。蓝牙连接完成。
4. 调整 iPad 至适合观看的角度。可调角度范围：50° 至 70°。

请注意：

 - 转动 iPad 时，您需要向下按压。
 - 插槽可承受的最大重量为 5kg。

为电池充电



1. 将微型 USB 连接线的一端插入充电端口，将另一端插入电脑上的 USB 端口。
或者，您也可以使用 USB 充电器（如 iPad 随附的充电器）进行充电，前提是电源输出功率为 5V 和至少 500mA。
电池充电过程中，状态指示灯将闪烁绿灯。
2. 为电池充电，直到状态指示灯变为稳定的绿灯为止。

电池信息：

- 电池充满电之后，如果键盘盖每天使用约两个小时，则电量可以维持三个月。
- 如果打开键盘盖之后，状态指示灯短暂亮起红灯，请为电池充电。
- 不使用时，请关闭键盘盖，节省电池电量。
- 如果键盘盖处于开启状态而未使用，则会进入休眠模式。按任意键退出休眠模式。

热键

**Home = iPad 主屏幕****切换应用程序****Siri®**

通过语音发送消息、拨打电话、安排会议等

**搜索**

启动 iPad 的搜索功能

**切换语言**

切换键盘语言

**虚拟键盘**

显示或隐藏虚拟键盘

**截屏****上一曲目****播放/暂停****下一曲目****静音****调低音量****调高音量****锁屏**

锁定或解锁 iPad 屏幕

功能键

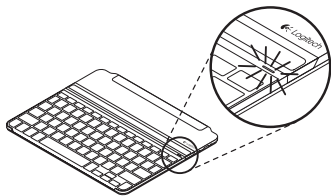
**Fn + X = 剪切****Fn + C = 复制****Fn + V = 粘贴****Fn + 左光标 = 选择左侧内容**
逐字选择左侧文本**Fn + 右光标 = 选择右侧内容**
逐字选择右侧文本

注意：

- 要选择功能键，请按住 Fn 键，然后按上方显示的键。

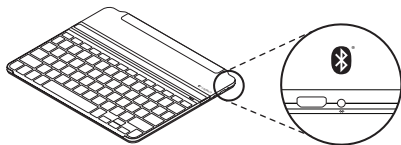
使用您的产品

状态指示灯



指示灯	说明
闪烁绿灯	电池正在充电。
稳定绿灯	电池已充满 (100%)。
红灯	电量不足 (<20%)。为电池充电。
闪烁蓝灯	快速闪烁: 键盘盖处于可被搜索状态, 已准备好可以进行配对。 缓慢: 键盘盖正在尝试重新连接 iPad。
稳定蓝灯	蓝牙配对或重新连接成功。

连接另一个 iPad

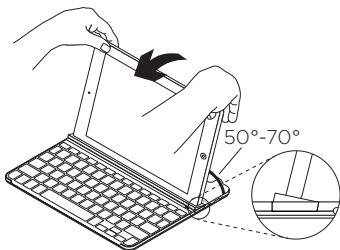


1. 将新的 iPad 插入键盘盖的插槽中。
2. 确保键盘盖处于开启状态。

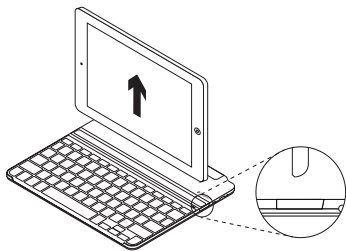
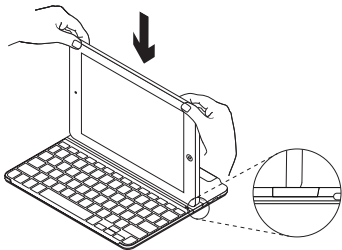
3. 检查并确保 iPad 的蓝牙功能已开启。
依次选择: 设置 > 蓝牙 > 开启。
4. 按下蓝牙连接按钮。键盘盖在 3 分钟内将处于可被搜索状态。
5. 在 iPad 的“设备”菜单上选择“Ultrathin for Air”。蓝牙连接完成。

卸下 iPad

1. 将 iPad 拉回：向后转动 iPad 直到其呈垂直角度：
3. 提起 iPad：将 iPad 从键盘盖中垂直提起：

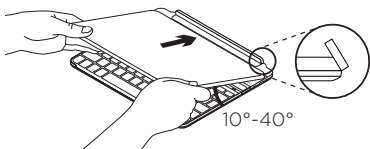


2. 向下按压：向下按压 iPad，确保插槽处的平整：

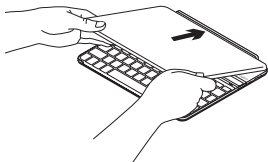


旅行时收纳 iPad

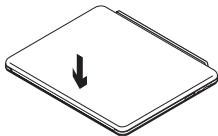
1. 将 iPad 滑向键盘盖后部的转轴。
当 iPad 靠近后部转轴时，转轴会弹出：



2. 将 iPad 固定到后部转轴上：

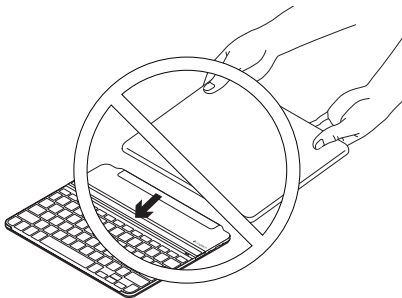


3. 将 iPad 向下贴近键盘盖直至闭合。
磁力夹将把 iPad 固定到位：

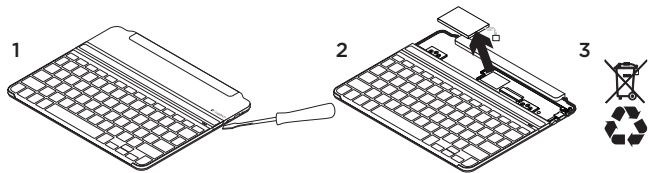


请注意：

- 请勿将 iPad 从相反方向滑入转轴：



电池废弃处置



1. 用螺丝刀撬开键盘的顶盖。
2. 从电路板上分离电池，取出电池。
3. 根据当地法律对产品和电池进行弃置。

疑难解答

键盘盖不工作

- 按任意键即可将键盘盖从休眠模式中唤醒。
- 将键盘盖关闭，然后再将其重新开启。
- 为内置电池充电。有关详细信息，请参见“为电池充电”。
- 在键盘盖与 iPad 之间重新建立蓝牙连接：
 - 确保 iPad 的蓝牙功能已开启。
 - 在 iPad 的“设备”菜单上选择“Ultrathin for Air”。蓝牙连接成功后，状态指示灯短暂变为蓝灯。

我的 iPad 无法插入插槽

- 请确保您是将 iPad 的横边插入插槽。键盘盖不支持纵向模式。

访问“产品中心”

我们的网站提供有关于本产品的详细信息和支持服务。请抽时间访问“产品中心”，了解关于新键盘盖的更多信息。

浏览在线文章，查看设置帮助、使用技巧或关于更多功能的信息。

通过“社区论坛”与其他用户交流，获得建议，提出问题，分享解决方法。

“产品中心”提供了广泛的内容选择：

- 教程
- 疑难解答
- 支持社区
- 软件下载
- 在线文档
- 保修信息
- 备用部件（若有供应）

访问：

www.logitech.com/support/ultrathin-air

您对本产品有何感想？

欢迎拨冗告知我们。
感谢您购买罗技产品。

www.logitech.com/ithink

www.logitech.com/support/ultrathin-mini

Table of Toxic and Hazardous Substances/Elements and their Content

产品中有毒有害物质或元素的名称及含量
根据中国<<电子信息产品污染控制管理办法>>

手持通讯设备配件 Mobile Accessory						
有毒有害物质或元素 Toxic or Hazardous Substances and Elements						
部件名称 Parts Name	铅 (Pb)	汞 (Hg)	镉 (Cd)	六价铬 (Cr(VI))	多溴联苯 (PPB)	多溴二苯醚 (PBDE)
电缆线/电源 Cable/Adaptor	X	O	O	O	O	O
电路板组件 PWAs	X	O	O	O	O	O
塑料外壳 Plastic enclosure	O	O	O	O	O	O
塑料部件 Plastic parts	O	O	O	O	O	O
金属部件 Metal parts	X	O	O	O	O	O
橡胶部件 Rubber parts	O	O	O	O	O	O

O =表示该有害物质在该部件所有均质材料中的含量均在SJ/T 11363-2006标准规定下。
X =表示该有害物质至少在该部件的某一均质材料中的含量超出SJ/T 11363-2006标求。
表中标有 " X " 的所有部件均符合欧盟RoHS Recast法规- 2011/65/EU
指令。此表显示"罗技科技有限公司"的电子产品信息产品中何处存在这些有毒有害物质。装产品都包含上述所有部件。
注: 环保使用期限的参考标准, 取决于产品正常工作的温度和湿度等条件。





www.logitech.com

www.logitech.com/support/ultrathin-air

© 2014 Logitech. All rights reserved. Logitech, the Logitech logo, and other Logitech marks are owned by Logitech and may be registered. Apple, iPad, iPad Air and Siri are trademarks of Apple Inc., registered in the U.S. and other countries. *Bluetooth* is a registered trademark of Bluetooth SIG, Inc. All other trademarks are the property of their respective owners. Logitech assumes no responsibility for any errors that may appear in this manual. Information contained herein is subject to change without notice.

版权所有 © 2014 年罗技。罗技、罗技标志、Logitech 和其他罗技商标均归罗技所有，并或已注册。Apple, iPad, iPad Air 和 Siri 是 Apple Inc. 在美国和其他国家注册的商标。*Bluetooth*® 文字商标和标志由 Bluetooth SIG, Inc. 所有其它商标均是各自所有者的财产。罗技对于本手册中可能出现的任何错误不承担任何责任。本手册中包含的信息如有更改，恕不事先通知。

621-000272.004