

MeetUp CC4000e

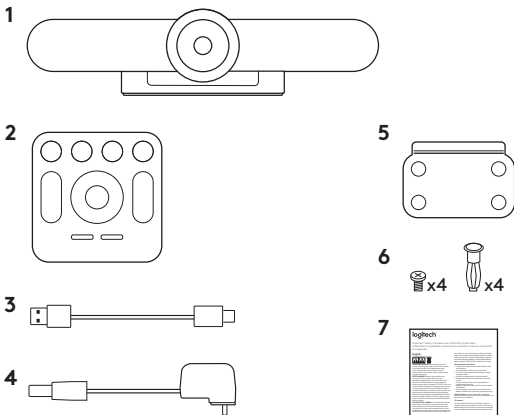
Setup Guide · 设置指南



logitech 罗技™

English	3
简体中文10

WHAT'S IN THE BOX

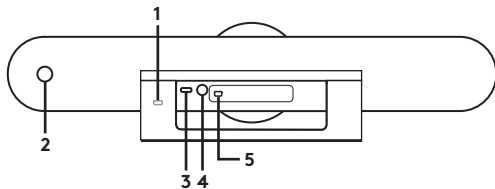


1. MeetUp camera and speakerphone unit
2. Remote control
3. 5m USB cable

4. Power adapter
5. Wall mounting bracket
6. Wall mounting hardware
7. Documentation

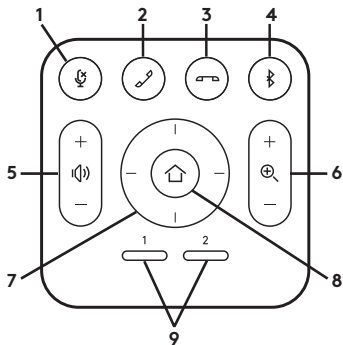
WHAT'S WHAT

CAMERA SPEAKERPHONE



1. Security slot
2. Remote control pairing
3. USB
4. Power
5. Optional expansion microphone

REMOTE



1. Microphone mute
2. Call answer
3. Call end
4. Bluetooth® pairing
5. Volume up/down
6. Zoom in/out

7. Camera pan/tilt
8. Camera home
9. Camera preset

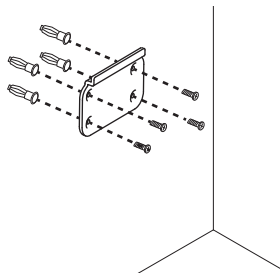
* Please note that not all applications support call answer and end buttons.

Thanks for buying MeetUp. We think you'll find the extra wide field of view will help everyone feel included in the meeting, enhancing communication.

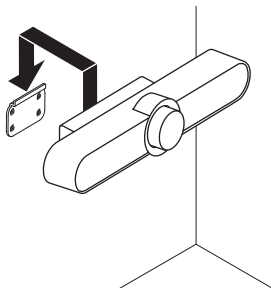
PLACEMENT

We recommend placing the camera as close to eye level as possible. Best results typically come from mounting below the monitor.

1. Place on a table or shelf near the monitor.
2. Connect the cables.
3. Mount on the wall:
 - a. Attach bracket to the wall. Please use the appropriate type of screws for your wall type.



- b. Attach the camera to the bracket.

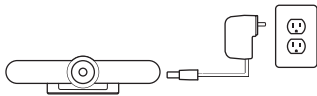


4. Mount to the TV: An optional TV mount bracket is available on Logitech.com.

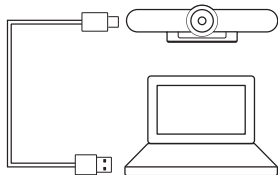
CONNECTION

Connecting MeetUp is the same whether you plan on using a dedicated computer in the room, or your team members bring a laptop to the room to run the meeting.

1. Plug MeetUp into power.



2. Connect the USB cable from MeetUp to the computer.



3. Connect the TV to the computer.

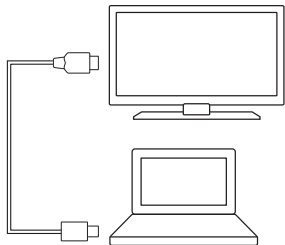
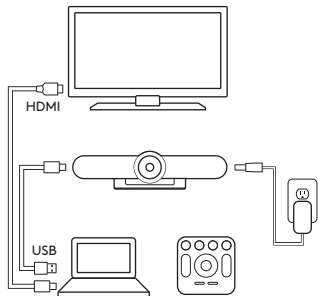


Diagram of all connections:



MAKE MEETUP THE DEFAULT DEVICE

Ensure that MeetUp is chosen as the camera, speaker and microphone in your video conferencing applications. Please consult the application documentation for further instructions on how to do this.

NOTE REGARDING 4K VIDEO

The USB 2.0 cable included with MeetUp supports FullHD video (up to 1080p). If you plan on using 4k video, please use a USB 3.0 cable (not included).

STARTING A VIDEO CALL

After installing MeetUp and ensuring it is the default device in your video conferencing application, simply start the application in the normal manner and enjoy the benefits of improved audio and video.

PAIRING MEETUP TO A *BLUETOOTH* DEVICE

You can use MeetUp for audio calls when paired to a *Bluetooth* device.

To pair your *Bluetooth* device to MeetUp, follow these simple step:

- 1.** Press and hold the *Bluetooth* button on the remote control until you see a flashing blue light near the camera lens.
- 2.** Place your mobile device in *Bluetooth* pairing mode and select “Logitech MeetUp”.

You are now ready to use MeetUp for audio calls.

Pressing the *Bluetooth* button on the remote after pairing will disconnect the *Bluetooth* device (it will still be “paired” but not “connected”). Pressing it again will reconnect the last paired device in range.

PAIRING THE REMOTE CONTROL TO THE CAMERA

Your camera and remote control are paired at the factory. However, if you need to pair a remote to the camera (such as when replacing a lost remote) do the following:

1. Press and hold button on the back of the camera until LED flashes blue.
2. Press and hold the *Bluetooth* button on the remote for 10 seconds to place it in pairing mode.
3. Once the remote and camera are paired the LED will stop flashing.
4. If the pairing fails, the LEDs will keep flashing. Start from step 2 and repeat.

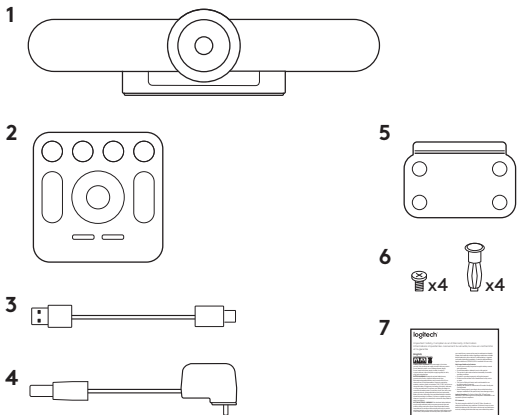
FOR MORE INFORMATION

You can find additional information on MeetUp including:

- FAQs
- Software to enable functions in various applications
- How to order replacement parts
- And more at

www.Logitech.com/MeetUp

包装内容



1. CC4000e 摄像头与扬声器电话设备

2. 遥控器

3. 5 米 USB 接线

4. 电源适配器

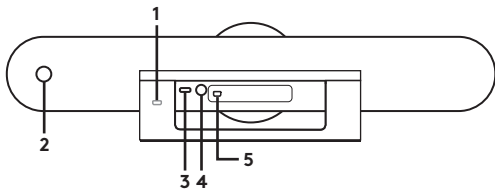
5. 壁挂支架

6. 壁挂零件

7. 文档

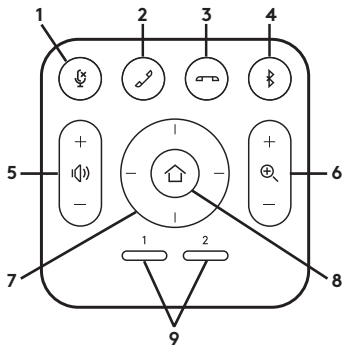
硬件说明

摄像头扬声器电话



1. 安全槽
2. 远程控制配对
3. USB
4. 电源
5. 可选扩展麦克风

遥控器



1. 麦克风静音
2. 接听电话
3. 挂断电话
4. 蓝牙™ 配对
5. 音量增大/减小

6. 放大/缩小
7. 摄像头平移/倾斜
8. 摄像头主页
9. 摄像头预设

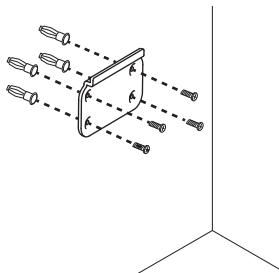
* 请注意, 并不是所有应用都支持接听和挂断电话按钮。

感谢购买 CC4000e! 期待更宽的视野能让与会者都感觉到自己已加入会议之中, 让沟通更进一步。

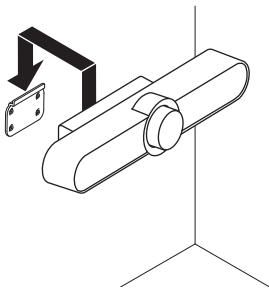
放置

建议尽可能地将摄像头放在齐眼高度。效果较好的安装位置通常是显示器下方。

1. 置于靠近显示器的台面或架子上。
2. 连接接线。
3. 安装到墙上:
 - a. 将支架安装到墙上。请根据墙壁类型使用适当的螺丝。



- b. 将摄像头固定到支架上。

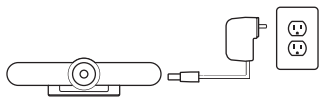


4. 安装到电视上: 可供选配的电视安装支架, 请访问 Logitech.com 选购。

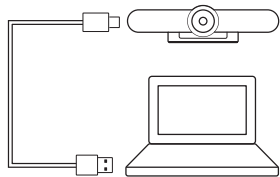
连接

无论是在会议室中使用专用电脑，还是由团队成员带笔记本来召开会议，CC4000e 的连接方式都是一样的。

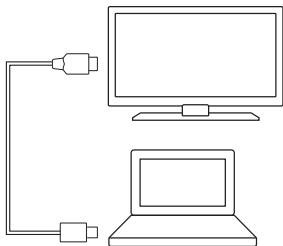
1. 为 CC4000e 插上电源。



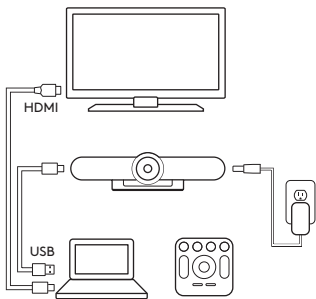
2. 用 USB 线连将 CC4000e 连接到电脑。



3. 将电视连接到电脑。



全部连接示意图:



将 CC4000E 设为默认设备

确认已在视频会议应用程序中将 CC4000e 选为摄像头、扬声器和麦克风。有关如何进行此操作的更多信息，请查阅应用程序文档。

有关 4K 高清视频的说明

CC4000e 随附的 USB 2.0 接线支持全高清视频 (不超过 1080p)。如果您要使用 4k 超高清，请使用 USB 3.0 接线 (未提供)。

开始视频通话

在安装 CC4000e 并确认已在视频会议应用程序中将其选为默认设备后，仅需按照正常方式启动应用程序，即可享受非凡声音与图像。

将 CC4000E 与蓝牙设备配对

在与蓝牙设备配对后，您可使用 CC4000e 进行音频呼叫。要将您的蓝牙设备与 CC4000e 配对，按以下步骤就可轻松完成：

1. 按住遥控器上的蓝牙按钮，直到看到摄像头镜头附件闪烁蓝色。
2. 将移动设备置于蓝牙配对模式，并选择“Logitech MeetUp”。

至此，您就可使用 CC4000e 进行视频呼叫了。

如在配对后按下遥控器上的蓝牙按钮，则会断开蓝牙设备 (但仍处于“已配对”状态，只是未“连接”)。再次按下会重新连接信号范围内上次已配对的设备。

将遥控器与摄像头配对

您的摄像头和遥控器在出厂时已经配对。但如果需要对摄像头和遥控器进行配对 (例如, 更换丢失的遥控器时), 请按以下步骤操作:

1. 按住摄像头后面的按钮, 直至 LED 闪烁蓝色。
2. 按住遥控器上的 **蓝牙按钮** 并保持 10 秒, 借此将遥控器置于配对模式。
3. 在遥控器和摄像头已配对后, LED 将停止闪烁。
4. 如果配对失败, 则 LED 将保持闪烁。从第 2 步开始重新执行。

获取更多信息

有关 CC4000e 的其他信息, 例如:

- 常见问题解答
- 支持不同应用程序功能的软件
- 如何订购替换件
- 以及更多, 请访问


www.Logitech.com/MeetUp

产品中有害物质的名称及含量

根据中国 <<电子电气产品有害物质限制使用标识要求>>

有害物质 Hazardous Substances						
部件名称 Parts Name	铅 (Pb)	汞 (Hg)	镉 (Cd)	六价铬 (Cr(VI))	多溴联苯 (PBB)	多溴二苯醚 (PBDE)
电缆线/电源 Cable/Adaptor	X	O	O	O	O	O
电路板组件 PWAs	X	O	O	O	O	O
塑料/其它部件 Plastic/Others parts	O	O	O	O	O	O
玻璃部件 Glass parts	X	O	O	O	O	O
金属部件 Metal parts	X	O	O	O	O	O
电池 Battery	X	O	O	O	O	O

本表格依据 SJ/T 11364 的规定编制。
 O=表示该有害物质在该部件均质材料中的含量均在 GB/T 26572 规定的限量要求以下。
 X=表示该有害物质至少在该部件的某一均质材料中的含量超出 GB/T 26572 规定的限量要求。
 表中标有 " X " 的所有部件均符合欧盟 RoHS Recast 法规 -2011/65/EU 指令。此表显示"罗技科技有限公司"的电子电气产品部件中何处存在这些有害物质。因型号不同，产品可能不包括上述所有部件，请以产品实际销售配置为主。

 本产品的环保使用期限为 10 年。
 电池部分的环保使用期限为 5 年。
 环保使用期限的参考标准，取决于产品正常工作的温度和湿度等条件。

© 2017 Logitech. Logitech, 罗技, Logi and other Logitech marks are owned by Logitech and may be registered. All other trademarks are the property of their respective owners. Logitech assumes no responsibility for any errors that may appear in this manual. Information contained herein is subject to change without notice.

版权所有 © 2017 年罗技。罗技、Logi 和其他罗技商标均归罗技所有，并或已注册。所有其它商标均是其各自所有者的财产。罗技对于本手册中可能出现的任何错误不承担任何责任。本手册中包含的信息如有更改，恕不事先通知。

620-007610.003