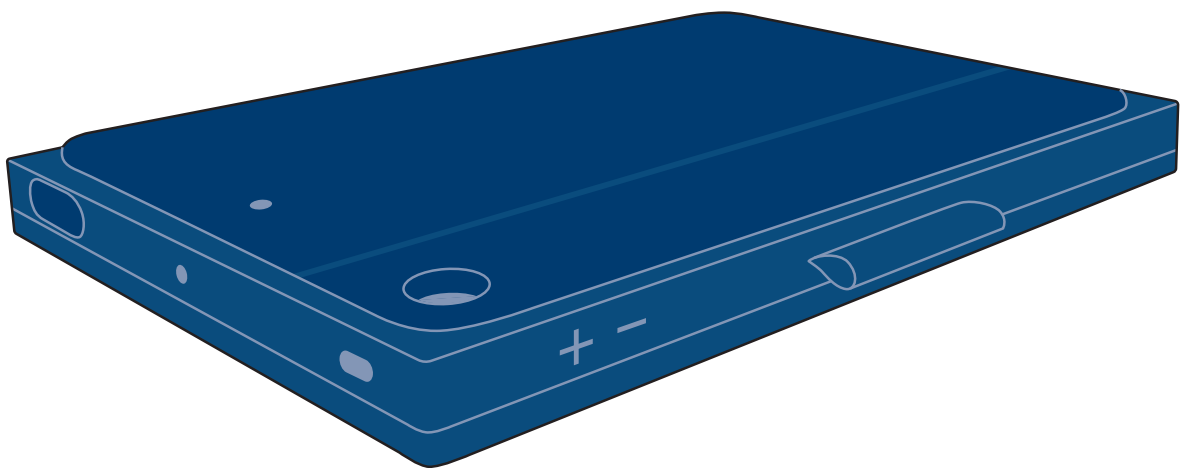


5

THINGS TO REMEMBER

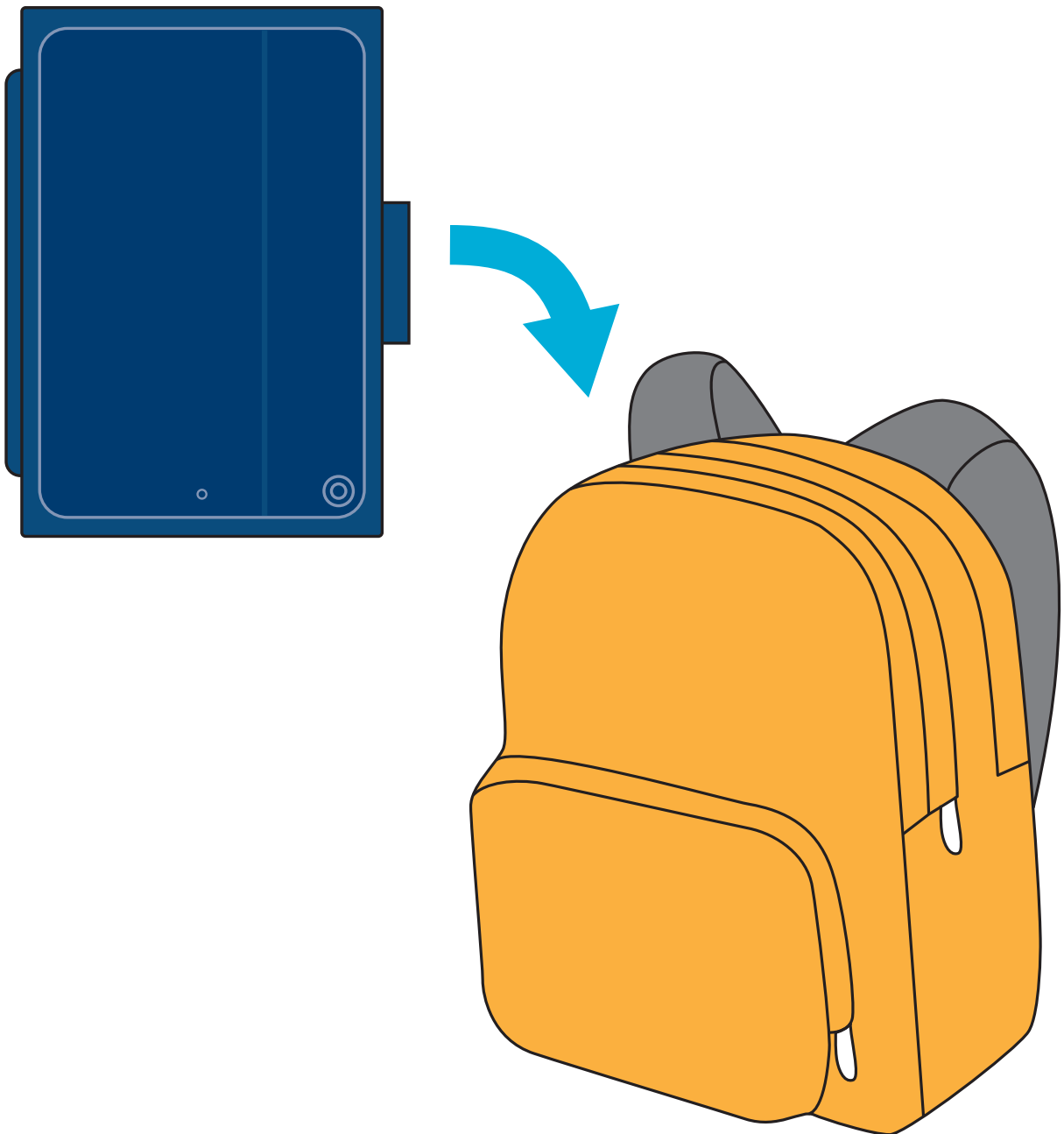
when using your iPad



logitech®

CLOSE

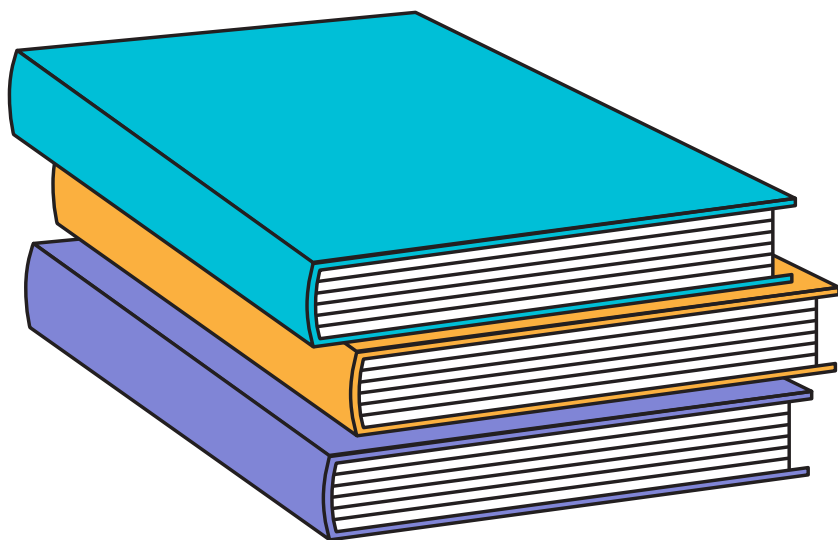
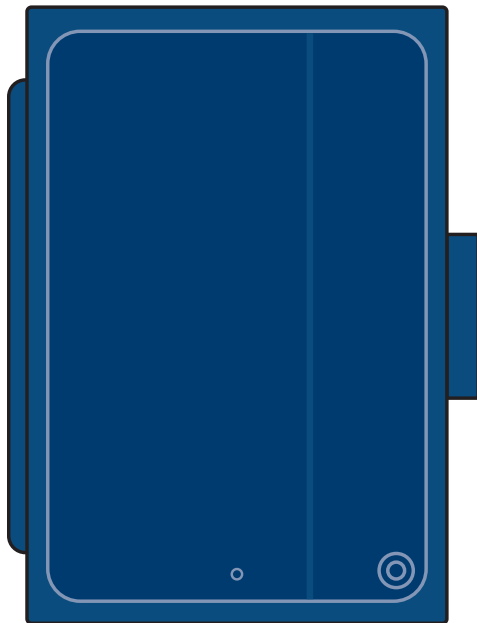
case before you put
it in your backpack.



logitech®

HOLD

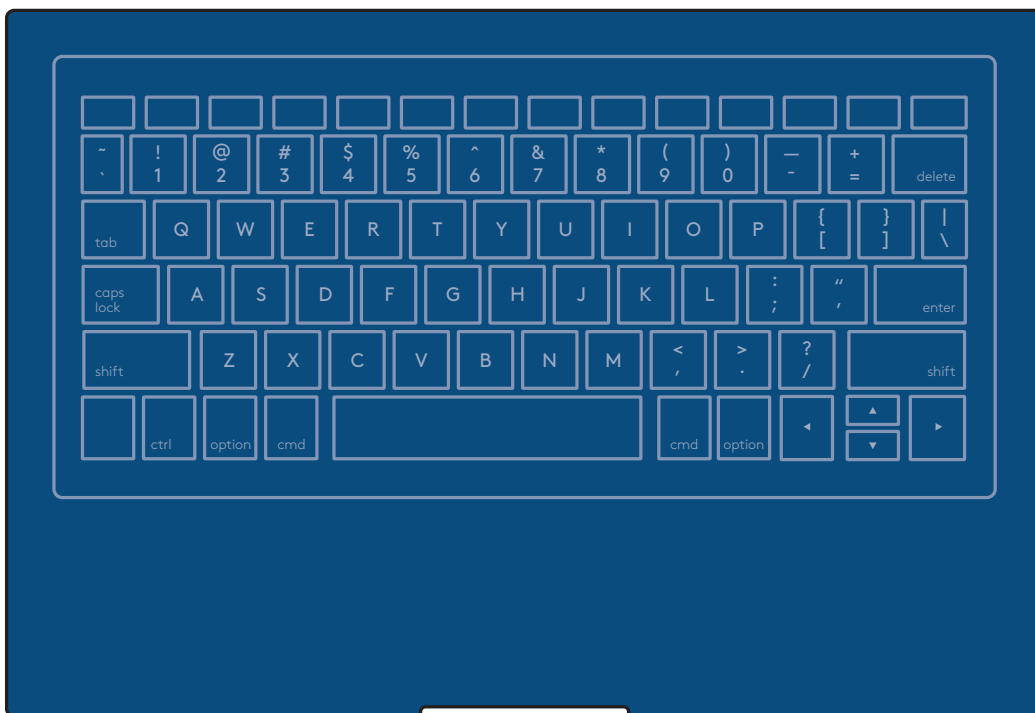
iPad separately
when carrying books
and binders.



logitech®

RESPECT

and take care of
school property.

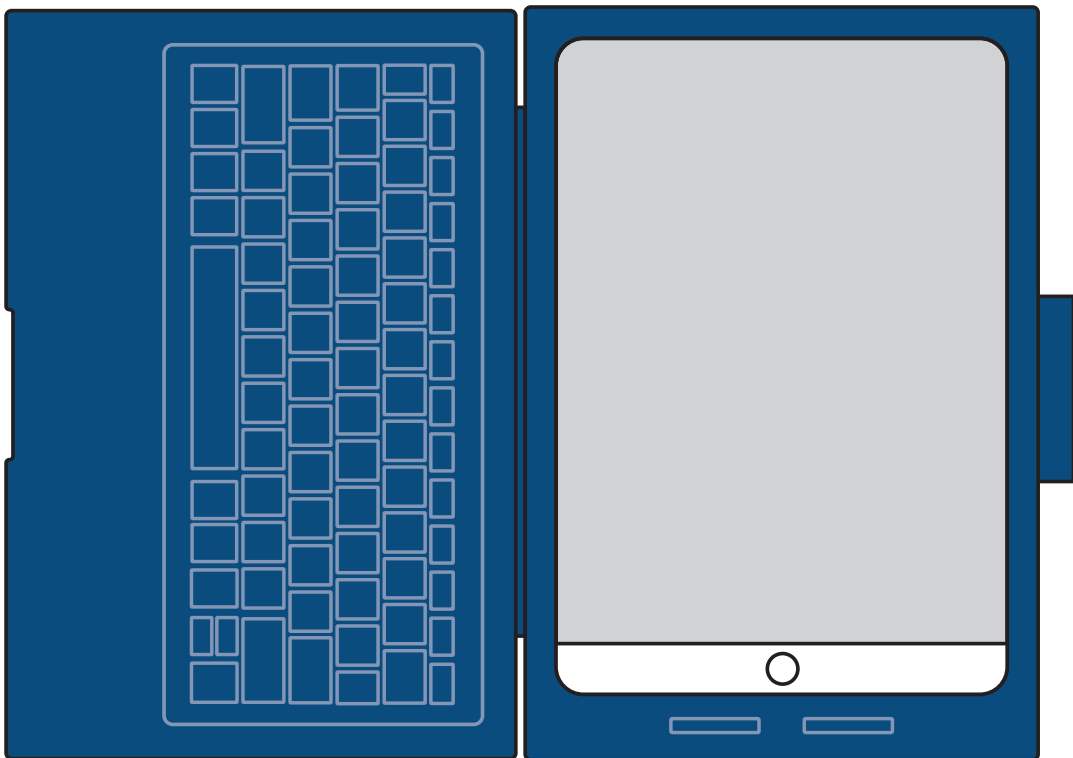


**Intentional damage
can break the
keyboard or iPad.**

logitech®

KEEP

iPad and case
together.



**iPad case should not
be taken apart.**

logitech®

KEEP

the space between
keyboard and iPad
clear of objects.



**No items should be
placed between the
keyboard and iPad.**

logitech®