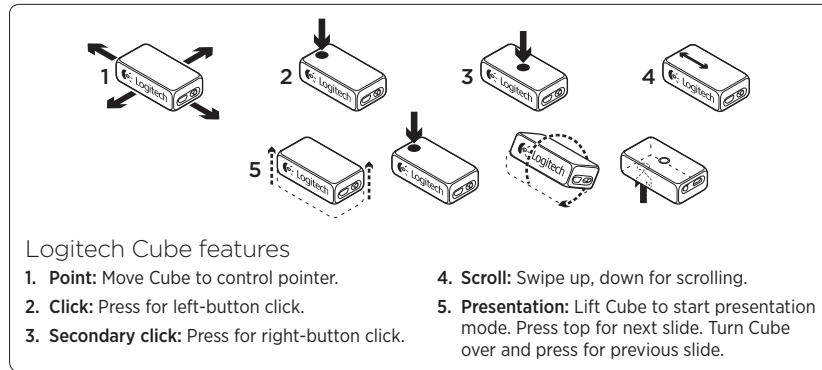
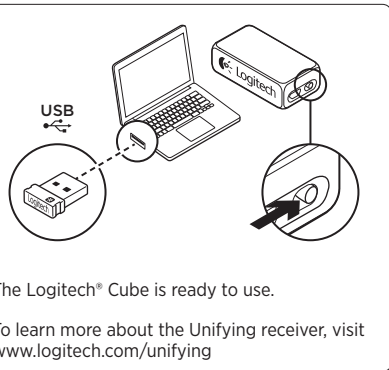
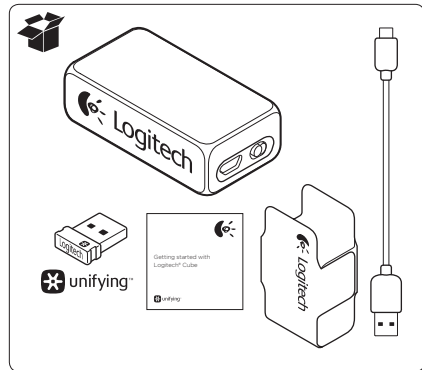




Getting started with Logitech® Cube

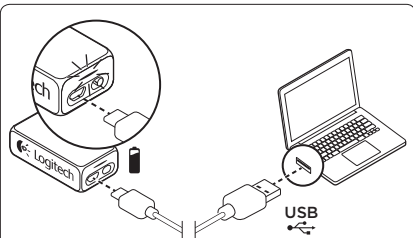




www.logitech.com

© 2011 Logitech. All rights reserved. Logitech, the Logitech logo, and other Logitech marks are owned by Logitech and may be registered. All other trademarks are the property of their respective owners. Logitech assumes no responsibility for any errors that may appear in this manual. Information contained herein is subject to change without notice.

620-003479.007



A red indicator warns you when the battery is low. It takes up to 1.5 hours to reach a full charge.

Troubleshooting: Cube not working

- Is the Cube powered on? If not, move the On/Off slider to the On position.
- You may need to recharge the Cube battery.
- Is the Unifying receiver plugged into a computer USB port? Try changing USB ports.
- If the Unifying receiver is plugged into a USB hub, plug it directly into a USB port on your computer.
- For more troubleshooting information visit www.logitech.com/support/cube

To learn more about the extended capability of the Logitech Cube, visit www.logitech.com/cube



CLASS 1M
LASER PRODUCT

M/N: C-U0007
Rating: 5 V \equiv 100 mA
FCC ID: JNZCU0007
IC: 4418A-CU0007
CNC: C-8941
CFT: RCPLOCU10-1356



M/N: C-U0008
Rating: 5 V \equiv 100 mA
FCC ID: JNZCU0008
IC: 4418A-CU0008
SUBTEL: 2217
CNC: C-9341
CFT: RCPLOCU11-0321



What do you think?
Please take a minute to tell us.
Thank you for purchasing our product.

www.logitech.com/ithink

www.logitech.com/support/cube



Australia	1800 025 544
New Zealand	0800 447 361
United States	+1 646-454-3200