

# User Manual



Logitech®  
Harmony®  
Link

Version 1.0



# Contents

<b>What is Harmony Link?</b> .....	<b>1</b>
<b>Getting to know your Harmony Link</b> .....	<b>1</b>
<b>Devices, inputs, and activities</b> .....	<b>1</b>
<b>Setting up your Harmony Link</b> .....	<b>2</b>
Connecting your Harmony Link .....	3
Launching My Harmony .....	3
Choosing a room .....	3
Connecting to your wireless network .....	3
Collecting device information .....	4
Adding devices.....	6
Adding activities .....	7
Syncing with your Harmony Link app.....	8
<b>Setting up your Harmony Link app</b> .....	<b>8</b>
Downloading the Harmony Link app.....	8
Connecting to your Harmony Link .....	8
Syncing your Harmony Link app .....	8
<b>Positioning your Harmony Link</b> .....	<b>9</b>
<b>Using your Harmony Link app</b> .....	<b>10</b>
<b>Frequently asked questions</b> .....	<b>10</b>
<b>Troubleshooting</b> .....	<b>11</b>
<b>Getting more help</b> .....	<b>12</b>
<b>Product specification</b> .....	<b>12</b>

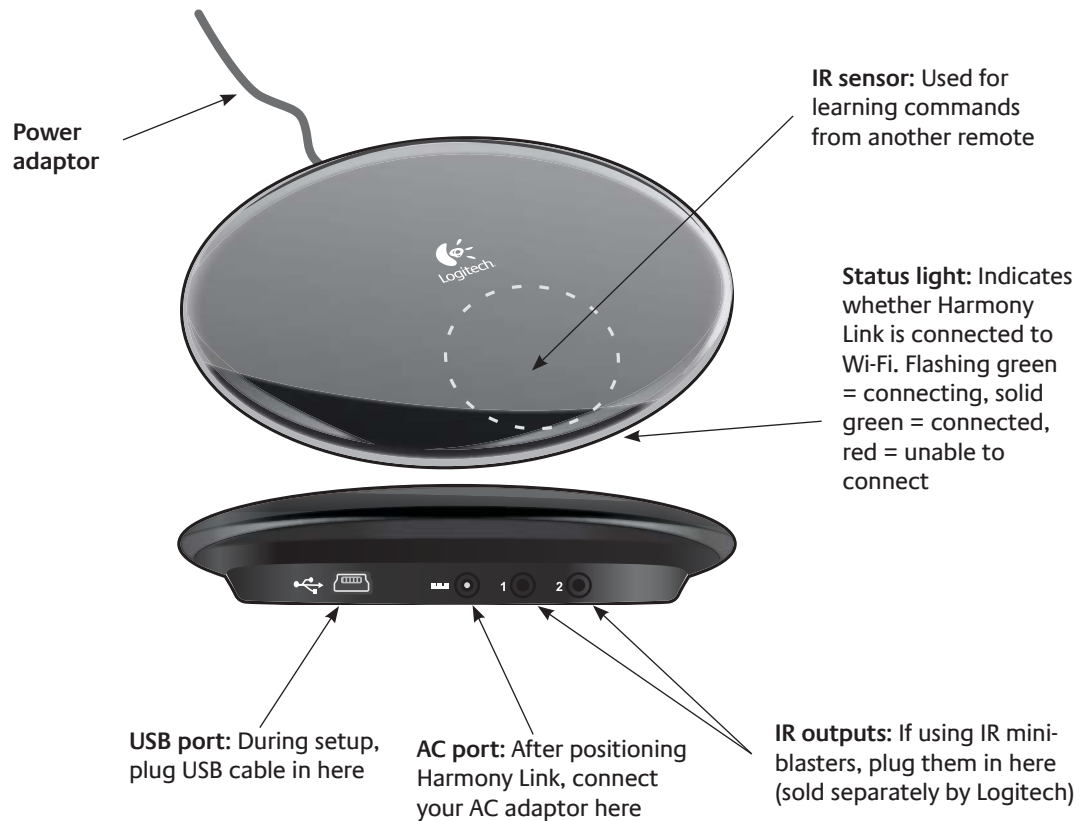


## What is Harmony Link?

Harmony Link allows you to use your Apple mobile device (iPhone, iPad, or iPod touch) or Android mobile device to control your entertainment system. Using the Logitech Harmony Link app, you can launch activities and control devices with a single touch.

Your mobile device communicates with Harmony Link using your wireless (Wi-Fi) network, sending infrared (IR) signals to your entertainment devices to turn them on or off, set their inputs, change volume, and perform any other functions you require.

## Getting to know your Harmony Link



## Devices, inputs, and activities

To make the most of your Harmony Link, it helps to understand devices, inputs, and activities.

### Devices

Devices are the components of your entertainment system. They are things like your TV, cable box, DVD player, or game console.

### Inputs

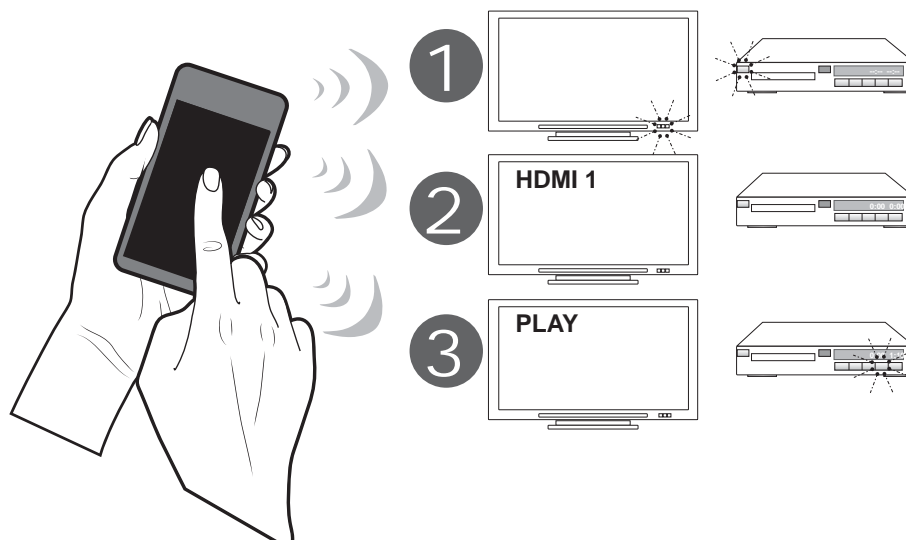
Inputs are connections on the back of your devices. Inputs are used to connect your devices to each other. When you want to go from watching TV to watching a DVD or

listening to music, you typically need to switch your TV and/or AV receiver to the correct input. For example, if your DVD player is connected to your TV using the HDMI 1 input, then the TV needs to be set to HDMI 1 to watch a DVD.

## Activities

An activity is something you do with your entertainment system, like watching TV, listening to music, or playing a game.

You can set up activities so that a single touch on your Harmony Link app turns on all the devices involved in a particular activity, turns off the ones you don't need, and changes the necessary inputs. For example, launching the Watch a Movie activity might turn on your TV, your Blu-ray player, and your AV receiver, and switch the TV and AV receiver to the correct video and audio inputs.



The activity also determines which devices handle important functions such as changing channels or controlling the volume.

## Setting up your Harmony Link

To set up Harmony Link, you need:

- A wireless (Wi-Fi) network with a strong connection in the room where your entertainment devices are located.
- An Apple or Android mobile device connected to the same Wi-Fi network.
- The Logitech Harmony Link app installed on your mobile device.
- A computer with Internet access.

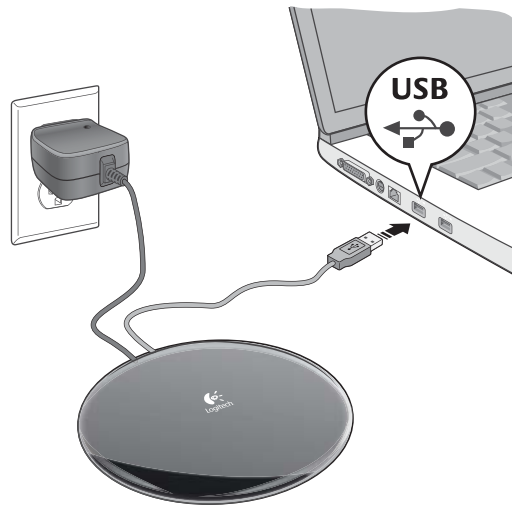
Setting up your Harmony Link involves the following steps:

1. Connect your Harmony Link
2. Launch My Harmony
3. Choose a room
4. Connect to your wireless network

5. Collect your model numbers
6. Add devices
7. Add activities
8. Sync with your Harmony Link app

## 1. Connecting your Harmony Link

Before you can begin setting up your Harmony Link, you need to plug it into a power supply using the supplied AC adaptor, and connect it to your computer using the supplied USB cable.



## 2. Launching My Harmony

Open a browser on your computer and go to [MyHarmony.com](https://myharmony.com). From there, follow the online instructions to set up your Harmony Link. If you are setting up Harmony Link for the first time, you'll be asked to create a Harmony account.

## 3. Choosing a room

As part of the setup, you are asked to pick the room where your Harmony Link will be located. Associating your Harmony Link with a room helps you distinguish it from other devices when connecting to it from your Harmony Link app.

## 4. Connecting to your wireless network

Next, you will be asked to select your wireless home network. Harmony Link communicates with your Harmony Link app using your wireless home network, the same one that your mobile device uses when you are at home.

You can select from the list of the available networks within range. If your network does not show up in the list, click **Other Network** to manually connect to the network. Icons appear within the list to indicate the strength of the network, and whether the network is secure (requires a password).

If you click **Other Network**, you'll be asked to identify the network and select the type of security. Most common security protocols are supported. If your security type is not listed, contact Customer Service.

If you're connecting to a secure network, you'll be asked to specify the network password.

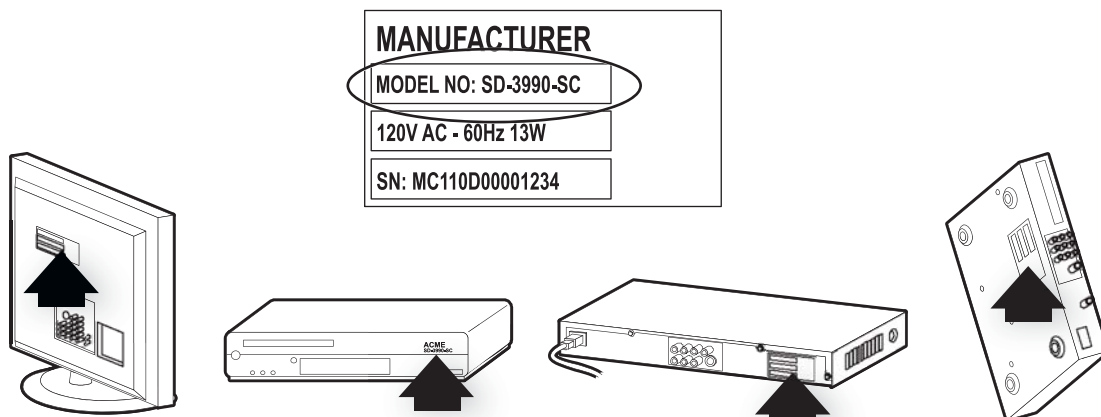
While Harmony Link is connecting to your Wi-Fi network, the status light on the front flashes green. When it has connected to your Wi-Fi network, the green light becomes solid. If it cannot connect to your network, the light turns red.

## 5. Collecting device information

You need to collect your manufacturer and model numbers of the devices you want to control with your Harmony Link app. You also need to know which inputs are used to connect your devices.

### Finding model numbers

On most entertainment components, the model number is usually found on a label located on the front, back, side, or bottom of the device.



If you cannot find the model number on the device itself, the user manual that came with your device should list the manufacturer and model number.

### How do I find my inputs?

Inputs are how your devices are connected. Your Harmony Link app needs to know your inputs so that it can switch them automatically for you when you start an activity. For example, if your DVD player is connected to your TV using the HDMI 1 input, then the TV needs to be set to HDMI 1 to watch a DVD.

On your TV, you normally change inputs by pressing buttons on your original remote. When you change inputs, you normally see the name of the input appear on the TV screen. You may need to change or switch between your inputs to see all of their names. Your TV inputs might include Input 1, Input 2, TV, and VCR.

On your AV receiver, you normally change inputs by pressing buttons on a remote or on



the front of the receiver itself. You might see which input is selected by a digital display on the front of the receiver or by which button is pressed. Your audio receiver inputs might include CD, DVD, and AUX.

**Note:**

*You can also examine where the cables connect to your device and make note of the names of the inputs used.*

If you're still not sure how your devices are connected, follow the steps below:

**Step 1— Turn on all your devices**

Start by turning on all the devices in your entertainment system. If possible, you should start playing something in each player (e.g. Blu-ray Disk player or CD player). By having all your devices on, it's easier to see how they're connected.

**Step 2 — Watch the TV**

In this step, you use your TV's original remote control to switch between inputs.

Using your TV's original remote, press the input button and select each input one-at-a-time. For each input, note which device appears to be connected to that input. For example, if you switch to HDMI 1 and see your DVD playing, you know your DVD player is connected to HDMI 1.

**Step 3 — Listen to the sound**

You need to complete this step only if you have an AV receiver that manages the sound for your entertainment system.

Using your AV receiver's original remote, press the input button and select each input one-at-a-time. For each input, note which device appears to be connected to that input. For example, if you switch to OPTICAL 1 and hear the sound from your DVD playing, you know your DVD player is connected to OPTICAL 1.

**Device worksheet**

Device	Manufacturer	Model #	Inputs	From
<i>e.g. TV</i>	<i>Sony</i>	<i>KDL-42V4100</i>	<i>HDMI 1</i>	<i>Cable box</i>
TV				
Cable/satellite				
DVD				
Game system				
AV receiver / home theater				

## 6. Adding devices

After you have collected the model numbers for your entertainment devices, you can begin adding them to your Harmony account. You can use your Harmony Link app to control up to 8 devices.

**Note:**

*If you add the wrong device, you can remove it once initial setup is complete.*

My Harmony will walk you through the process of setting up your devices. You'll be asked to provide the manufacturer name and model number for each entertainment devices you want to control with your Harmony Link app.

You can use the [Device worksheet](#) on page 5 to gather the necessary information. For devices with multiple inputs (like TVs and AV receivers), you'll need to note which devices are connected to them, and with which inputs.

### Teaching commands using your original remote

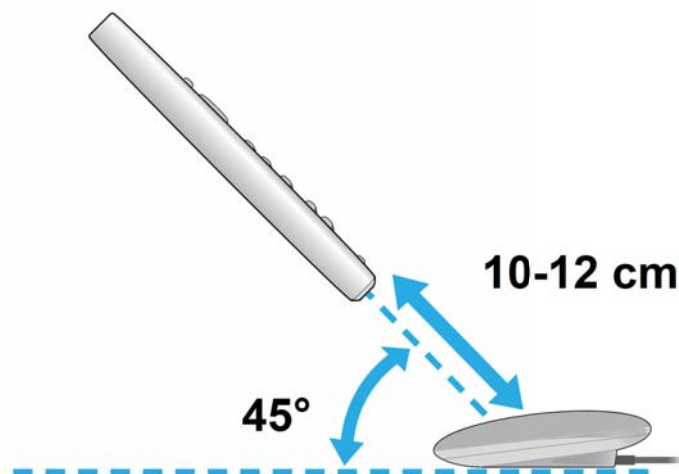
If My Harmony doesn't recognize the brand and model number of the device you're trying to add, you can use the original device remote to teach its commands so you can control the device. Your Harmony Link has an IR sensor so it can learn commands from your original remote.

Before you can begin teaching, you must connect your Harmony Link to your computer using the USB cable provided, and plug your Harmony Link into a power supply.

**Note:**

*Harmony Link may take up to a minute to fully power up before you can begin teaching.*

Follow the on-screen instructions to position the remote and your Harmony Link for teaching. Make sure you point the original remote at the Logitech logo on your Harmony Link at a 45 degree angle, about 4-5 inches (or 10-12 centimeters) away.



You'll be asked to press one or more buttons on the original remote. Press and release the button as you normally would. Do not press and hold the button. If you can't find the

button corresponding to the command you're being asked to press, click **Skip** to go to the next command.

**Tips:**

- *If you can't find the Power On/Off command on your original remote, it might be labelled I/O, or just Power. You may also have two different buttons for On and Off. Just press the **Power On** button.*
- *If My Harmony is unable to recognize any commands from the original remote, try putting new batteries in the remote. If you are using a Dish Network, Direct TV, or Bose device, make sure the device is not in RF (radio frequency) mode.*

A confirmation message will appear once My Harmony has recognized your device and added it to your account.

## 7. Adding activities

An *activity* is something you do with your entertainment system, like watching TV, listening to music, or playing a game.

You can set up activities so that a single touch on your Harmony Link app turns on all the devices involved in a particular activity, turns off the ones you don't need, and changes the necessary inputs.

For example, launching the Watch TV activity might turn on your TV, your cable or satellite receiver, and your audio-video receiver, and switch to the correct video and audio inputs. The activity also determines which devices handle important functions such as changing channels or controlling the volume.

The activities you set up on My Harmony will appear on your Harmony Link app. There is no limit to the number of activities you can set up for your Harmony Link app.

When you set up an activity, you choose the devices that are involved in the activity, and indicate which devices you use to control important functions. For example, when you set up the Watch TV activity, you pick the device that changes the channels and the device that controls the volume.

The first step in setting up an activity is to choose the activity type. Based on the activity type you pick, My Harmony will recommend appropriate devices, and tailor the remaining choices to the selected activity type. If you choose to set up a Custom activity, you'll be asked to select devices without any recommendations, and to select inputs for each device that supports multiple inputs. You can set up multiple activities of the same type.

After you have chosen the activity type, you'll have an opportunity to specify the name of the activity. Depending on the devices you select, you may be asked which device controls the volume, changes the channel, or performs another function. If your activity includes a TV or AV receiver, My Harmony asks you which input the device uses for this activity. You may also be asked additional questions depending on your entertainment system.

## 8. Syncing with your Harmony Link app

After you have finished setting up your Harmony Link on My Harmony, you can set up your Harmony Link app and sync it with your Harmony account settings.

You can return to My Harmony at any time to adjust your devices and activities.

### Setting up your Harmony Link app

The Logitech Harmony Link app allows you to use your Apple or Android mobile device to control your entertainment system. You can use the Harmony Link app to control entertainment devices and activities you have set up to work with Harmony Link.

Setting up the Harmony Link app to work with your Harmony Link involves the following steps:

1. Download the Harmony Link app
2. Connect to your Harmony Link
3. Sync your Harmony Link app

You can also set up favorite channels on your Harmony Link app.

#### 1. Downloading the Harmony Link app

You can download the Harmony Link app from the iTunes Store or Android Market. Just search for “Logitech Harmony Link”.

#### 2. Connecting to your Harmony Link

Launch the Harmony Link app. The app will search your Wi-Fi network for devices with Harmony Link technology. If a device is found, it will be identified by the email address assigned to Harmony account used to set it up.

Click **Connect** beside your Harmony Link device. You’ll be asked to sign into your Harmony account using your password.

#### 3. Syncing your Harmony Link app

The first time you connect to your Harmony Link, the Harmony Link app will be automatically updated with your Harmony account settings. If you make any changes to your setup, you must manually sync your Harmony Link app.

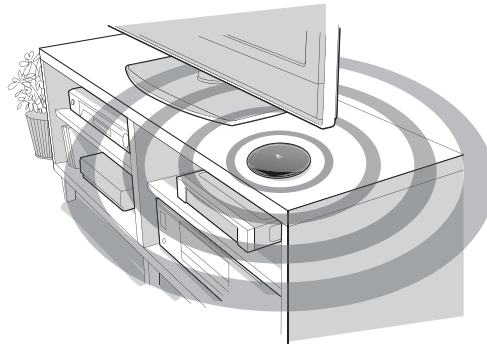
To sync your Harmony Link app with your Harmony account:

1. Go to your Settings screen or menu.
2. Select **Sync with My Harmony**.
3. Tap **Sync Now**.

## Positioning your Harmony Link

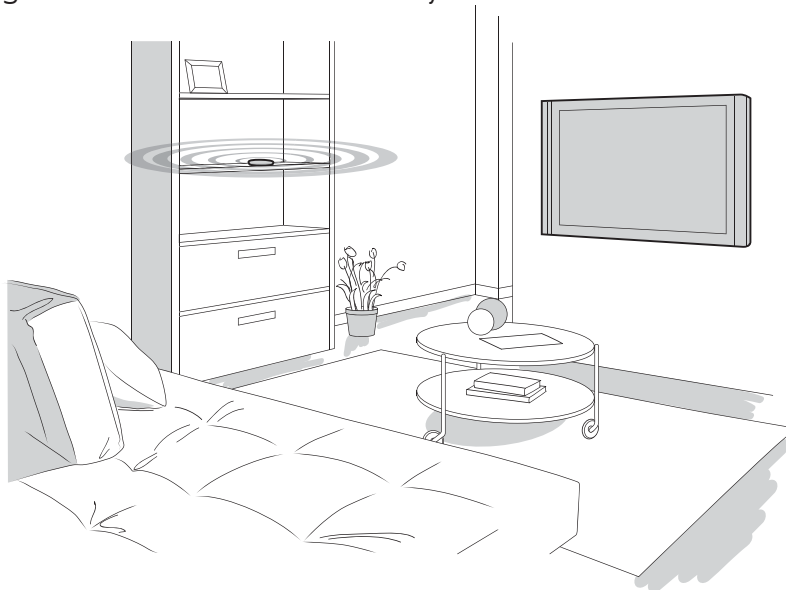
After you have set up your Harmony Link, you can disconnect the USB cable and position the device for use. You should choose a location for your Harmony Link near your entertainment devices, where it will have a strong connection to your wireless network. For best results, choose a location where your mobile device has a strong connection to your wireless network.

Ideally, you should position the Harmony Link on top of an open cabinet beside your entertainment devices.



*On top of an open cabinet*

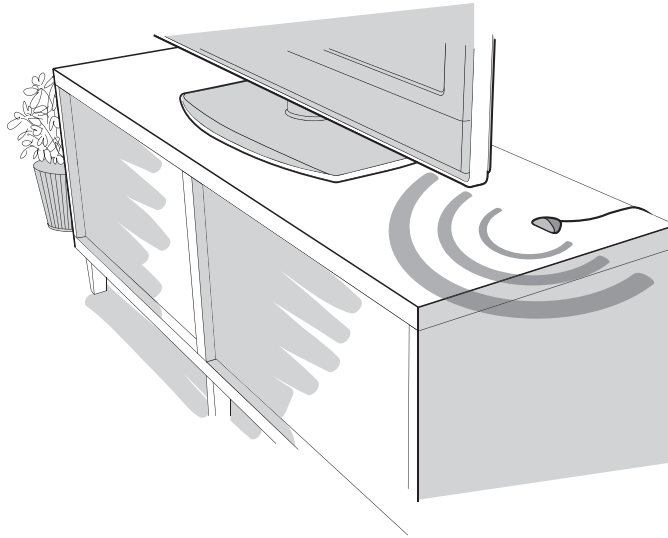
If you position your Harmony Link so that it does not have a direct line-of-sight to your entertainment devices, it still may be able to reach them by bouncing its signals off of walls, floors or ceilings. If your ceiling is very high, or if the back wall of the room is too far away, you might need to move the Harmony Link closer to the entertainment system.



*Not in direct line of sight*

A large flat-screen TV can act as a shield to prevent Wi-Fi signals from reaching your Harmony Link. If you experience problem, you may need to move your Harmony Link further in front of, or to one side, of your TV.

If you want to keep all your devices in a closed cabinet, you may need to connect IR extenders (called mini-blasters) to the Harmony Link. A mini-blaster is an accessory that relays IR signals to devices that cannot be accessed by the Harmony Link. Mini-blasters are sold separately by Logitech at [www.logitech.com](http://www.logitech.com).



*In a closed cabinet using mini-blasters*

Once you've chosen a good location, connect the Harmony Link AC adaptor to a power source. Your Harmony Link will reconnect to your Wi-Fi network.

## Using your Harmony Link app

You can use the Harmony Link app to control entertainment devices and activities you have set up to work with Harmony Link. With the Harmony Link app for iPad, you can also browse a personalized TV schedule.

On your Harmony Link app, you'll find your activities, favorites and other options to quickly access content. Tapping on one of these will turn on the required devices and go to the selected content. You can add or adjust any of your devices or activities from My Harmony.

Your Harmony Link app comes with an on-screen touchpad and keyboard. You can use gestures like swipe and drag to control volume and playback, and scroll through listings. To enter gesture mode, shake your phone.

## Frequently asked questions

### How do I set up a custom activity?

The first step in setting up an activity is to choose the activity type. To create a custom activity, select Custom as the activity type.

Based on the activity type you pick, My Harmony will recommend appropriate devices, and tailor the remaining choices to the selected activity type. If you choose to set up a

Custom activity, you'll be asked to select devices without any recommendations, and to select inputs for each device that supports multiple inputs.

Depending on the devices you select, you may be asked which device controls the volume, changes the channel, or performs another function. If your activity includes a TV or AV receiver, My Harmony asks you which input the device uses for this activity. You may also be asked additional questions depending on your entertainment system.

### **Can I create multiple activities of the same type?**

You can set up multiple activities of the same type, including multiple Watch TV activities.

For each additional activity of the same type, My Harmony will suggest a name consisting of the activity type plus a number that is incremented for each additional activity. For example, a second Watch TV activity will be called Watch TV 2.

### **How do I rename an activity?**

You can change the name of an activity while you are setting it up or anytime afterwards.

While setting up an activity, you are given the opportunity to change the suggested name of the activity. You can keep the suggested name or enter your own.

To change the name of an existing activity, go to the Activities page in My Harmony, click the activity then click **Change Your Settings**.

## **Troubleshooting**

### **Why can't I control some or all of the devices I set up in My Harmony?**

There are several reasons why you may not be able to control some or all of the devices you set up in Harmony Link.

- The device you are trying to use does not match the one you set up in Harmony Link. Confirm your device's manufacturer and model number, and ensure that it matches the device you set up in Harmony Link.
- The device you are trying to control may not be plugged in properly. Ensure that your device is plugged into a power source.
- Ensure you can control your device using its original remote
- Your Harmony Link may not be plugged in. Make sure it is plugged into a working power supply using the supplied power adaptor. If your Harmony Link is not plugged in, the status light will not appear.
- You may not have synced your Harmony Link app with your Harmony account. To sync, go to your Harmony Link app and select **Sync with My Harmony** from the Settings screen or menu then tap **Sync Now**.

### **My Harmony Link is not being recognized by my Harmony Link app**

If your Harmony Link is not recognized by your Harmony Link app, or does not respond to your Harmony Link app's commands, you can reset it. Resetting your Harmony Link

involves updating your firmware and resetting your Wi-Fi connection. You can also reset your Harmony Link if you need to change your Wi-Fi settings (if, for example, you've replaced your router.)

Before resetting your Harmony Link, check to make sure it is plugged into a working power supply.

To reset your Harmony Link, go to the Settings page on My Harmony and select **Reset Your Harmony Link**.

Resetting your Harmony involves the following steps:

- connecting your Harmony Link to your computer using the supplied USB cable
- updating your firmware
- re-entering your Wi-Fi information

After you have connected your Harmony Link to your computer, the reset process will begin updating your firmware (if not already up to date). This may take several minutes. Do not disconnect or unplug your Harmony Link during this time.

If the new firmware cannot be loaded, you will be instructed to manually reset your Harmony Link by pressing and holding the red button on the bottom of the device until the status light flashes red (about 10-15 seconds).

## Getting more help

Several support features are available to help you with the setup and use of your Harmony Link. From My Harmony, click **Support**.

You'll be taken to Logitech's Support page where the following support options are available:

FAQs (Frequently Asked Questions)	A searchable list of customer questions with answers provided by Logitech's support staff and other users.
Community forums	A message board where Logitech users and moderators discuss product issues and suggest solutions (accessible directly at <a href="http://forums.logitech.com">http://forums.logitech.com</a> ).
Support staff	Contact Logitech Support staff via phone or e-mail.



## Product specification

Brands supported	5,000+
Devices supported	225,000+
Maximum # of devices	8
Power source	AC adaptor
IR learning	Yes
Learning capabilities	Any standard IR device with IR carrier in range of 30-60 kHz
IR transmitters	Blaster plus 2 cable extenders
IR transmission range	Up to 50 ft.
RF Wi-Fi	802.11 B/G
Supported encryption	WPA Personal, WPA2-Personal, 64 / 128 bit WEP
Memory type	Flash
Memory capacity	64MB
Weight	146 g
Dimensions	124.0 x 102.5 x 26.6 mm
Warranty	1 year (2 years for Europe)
Supported platforms	<p>Microsoft® Windows XP or Vista with Internet Explorer 7+, or Firefox 3+</p> <p>Microsoft® Windows 7 with Internet Explorer 8+ or Firefox 3+</p> <p>Intel Mac OS® 10.4.8+ with Firefox 3+ or Safari 4</p> <p><b>Note:</b> + indicates the specified version of software, or a later version.</p>

