



Setup Guide

Logitech® HD Pro Webcam C920

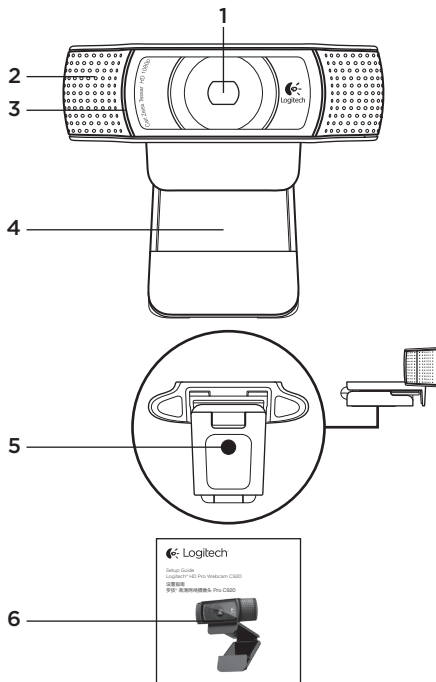
设置指南

罗技® 高清网络摄像头 Pro C920



Contents

English	3
简体中文	11
www.logitech.com/support	19



Features

1. Carl Zeiss® autofocus HD 1080p lens
2. Microphone
3. Activity light
4. Flexible clip/base
5. Tripod attachment
6. Product documentation

Thank you for buying your c920!



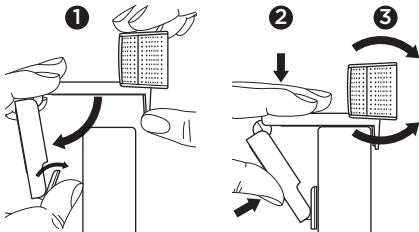
Use this guide to set up and begin using your Logitech webcam.

If you have questions before you start, or if you just want to learn more about your Logitech webcam, please visit logitech.com/support.

Setting up your webcam

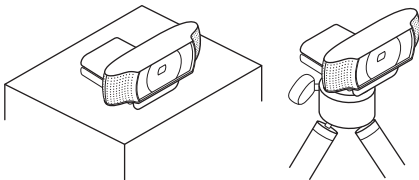
1 Place your webcam

Designed for the way you like to make a video call, place the Webcam c920 where you want it—on a computer monitor, desktop, or tripod.

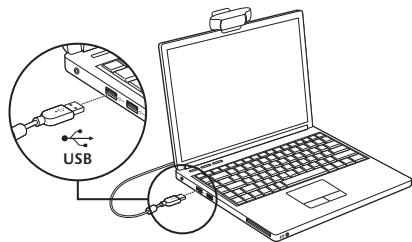


For placement on a monitor

Grasp the webcam as shown and open the flexible/clip base with your other hand. Mount the webcam, making sure the foot on the flexible/clip base is flush with the back of your monitor.



2 Connect your webcam



3 Install the software

If you're using your webcam with Windows® 8, the software required is downloaded automatically when you connect your webcam for the first time, and installed silently in the background.

Important: Make sure you're connected to the Internet, so the software can be downloaded.

If you're using your webcam with Windows® 7 or Windows Vista®, you must install the Logitech® Webcam Software, available from:

logitech.com/downloads

Getting started with video calling



Your Logitech HD Pro Webcam c920 provides full HD 1080p video calling.

To take advantage of video calling both you and the person you call must install Skype™, or use a different video-calling application such as Yahoo!® Messenger, Windows Live® Messenger or Gmail.

Learn more: skype.com

As well as a webcam and video calling application, both callers need:

- A computer with speakers (or a headset) and a microphone; your Logitech HD Pro Webcam c920 has two built-in microphones.
- A broadband Internet connection (e.g., DSL, T1, or cable)

Using your webcam with Windows 8

Use the Camera app, available from the Windows 8 Start screen, to operate and control your webcam.

Understanding the Camera app



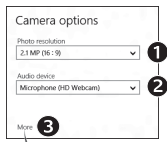
1. Preview window. Click or tap to capture photos or videos (depending on whether Video Mode is selected).
2. Change webcams (when you have more than one). The face of your Logitech webcam illuminates when selected.
3. Adjust your camera settings.
4. Activate or deactivate the Timer feature. When activated, there is a three second countdown to capturing a photo or video.
5. Turn Video Mode on (to record videos) or off (to take photos).
6. Click or tap on the arrows to scroll through the photos and videos you have captured. Videos are denoted by a timer and play button in the bottom right-hand corner:



Tip: The Camera app lets you use your webcam's most popular features quickly and easily. If you want to take advantage of the enhanced features your webcam offers, such as motion detection, use the Logitech Webcam Software available from logitech.com/downloads.

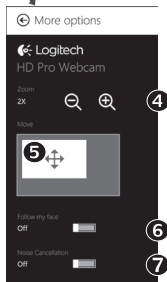
Adjusting your Camera settings

The Logitech software optimizes the settings for your environment automatically. To adjust any of your settings choose **Camera options**. This is available from the Camera app (see the previous page) and from within Metro apps that support webcams.



Choose your required resolution for photo capture, or video capture when in Video Mode.


1. Choose the microphone you want to use to record sound in your videos, if you have more than one available.
2. Access **More Options**, to benefit from enhanced features such as digital **Zoom** and **Move**.
3. If the **More Options** pane doesn't show the Logitech logo and offer enhanced options, it is likely that the Logitech software didn't install correctly when you first connected your camera. To reinstall it, go to the Windows Store and look for Logitech Camera Controller.
4. Zoom in or out to include/exclude your surroundings.
5. Having zoomed in, drag the white box to pan (adjust the focus area of your webcam).
6. Use **Follow my face** so you're always in the picture.
7. Enjoy clear conversations without annoying background noise.



Depending on the features available with your camera, you can access further advanced settings by scrolling.

Sharing your photos and videos

You can share your photos and videos via e-mail, Twitter, Facebook®, YouTube®, or Microsoft SkyDrive®. Follow these steps:

1. In the Camera app, scroll to the photo or video you want to share.
2. Select Share in the Charms bar (or press  - H):

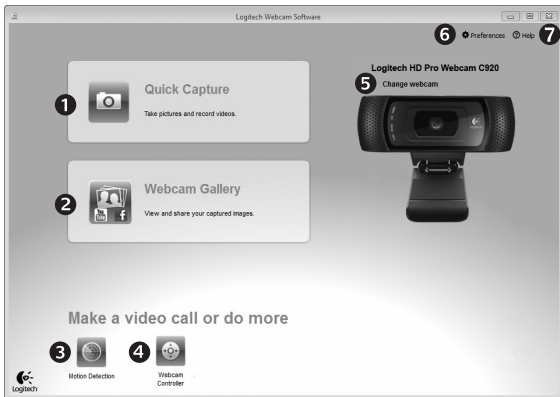


3. Choose the media through which you want to share the photo or video.

Using your webcam with Windows 7 and Windows Vista

The Logitech Webcam Software provides everything you need to use and control your webcam. Launch the software from the Windows Start® menu, or by right-clicking on the camera icon in the Windows taskbar.

Understanding the Logitech Webcam Software



1. Capture pictures and videos.
2. View captured images and share via e-mail, Facebook, or YouTube.
3. Capture videos triggered by detected motion.
4. Control your webcam while on a video call.
5. Change webcams (when you have more than one).
6. Open Logitech Webcam Software settings.
7. Open help dashboard.

Capturing video and snapping pictures



Quick Capture allows you to take photos and record videos easily.

You have easy access to webcam controls and settings:

1. Preview window
2. Capture mode: photo/video
3. Capture button
4. Webcam controls
5. Photo thumbnails
6. Video thumbnails
7. Click a thumbnail to enter the gallery

Viewing and sharing using the Gallery



Clicking on an image thumbnail in the gallery (1) opens the video or photo in the review window (2). You can then:

- Attach the video or picture file to an e-mail (3)
- Edit the photo or splice together video (4)
- Upload the picture or video to Facebook (5)
- Upload a video to Twitter or YouTube (6)

You may also drag and drop a gallery image onto one of the function tiles (items 3–6) to launch an editing application or to attach or upload.

Using motion detection

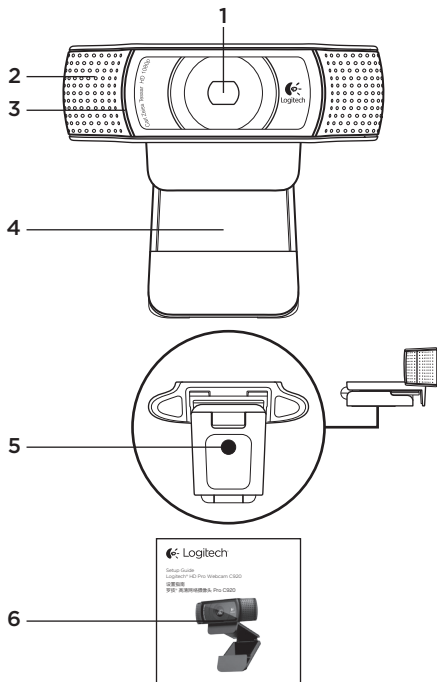


- Set up your webcam to record video when it detects movement.
- Adjust captured video duration and detection sensitivity.
- Captured video is automatically saved to your computer.
- View content in the Gallery or upload it using the One-touch Upload window.

Fine tuning your webcam during a video call



1. Launch the webcam controller when on a video call.
2. Use pan and tilt to find the best angle.
3. Zoom in or out to include/exclude your surroundings.
4. Use **Follow my face** so you're always in the picture.
5. Enjoy clear conversations without annoying background noise.
6. Correct for poor lighting environments using RightLight.
7. Choose between auto- or manual focus.
8. Adjust advanced webcam settings.



功能

1. 卡尔·蔡司® 自动对焦 1080p 高清镜头
2. 麦克风
3. 活动指示灯
4. 可调式通用夹/底座
5. 三角架附件
6. 产品文档

感谢您购买 c920!



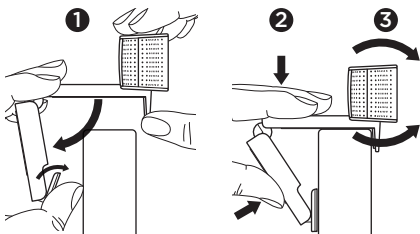
使用本指南设置并开始使用罗技网络摄像头。

如果您在开始前有什么问题，或者您想了解更多有关罗技网络摄像头的信息，请访问 logitech.com/support。

设置网络摄像头

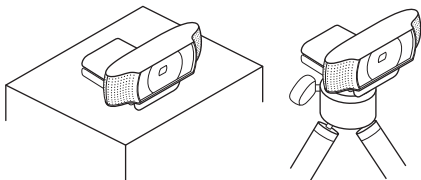
1 放置网络摄像头

网络摄像头 Webcam c920 让您可根据自己的喜好进行视频通话，可以将它放置于电脑显示器、桌面或三角架等任何位置。

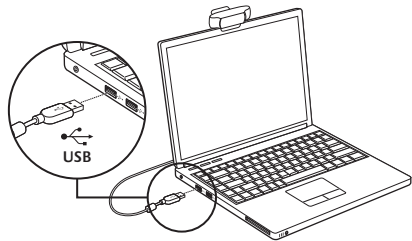


放置于显示器上

如图所示，握住网络摄像头，并用另一只手打开可调式/通用夹底座。装上网络摄像头，确保可调式/通用夹底座的底部与显示器背面齐平。



2 连接网络摄像头



3 安装软件

如果您的操作系统为 Windows® 8，所需软件会在第一次连接网络摄像头时自动下载，并在后台静默安装。

重要提示：请确保已连接网络，以便下载软件。

如果您的操作系统为 Windows® 7 或 Windows Vista®，则必须手动安装罗技® 网络摄像头软件，下载地址为：

logitech.com/downloads

开始进行视频通话



罗技高清摄像头 Pro c920 为您提供 1080p 全高清视频通话。

要使用视频通话，您和您的通话对象都必须都要安装 Skype™，或使用其他视频通话应用程序，例如 Yahoo!® Messenger、Windows Live® Messenger 或 Gmail。

要了解更多信息，请访问：skype.com

要使用网络摄像头和视频通话，两名通话者都需要：

- 一台装有扬声器（或耳机）的电脑和一只麦克风；罗技高清网络摄像头 Pro c920 拥有两个内置麦克风。
- 宽带互联网连接（例如 DSL、T1 或专线）

在 Windows 8 中使用网络摄像头

使用 Windows 8 “开始” 菜单中的摄像头应用程序运行和控制网络摄像头。

了解摄像头应用程序



1. 预览窗口。单击或轻点以拍摄照片或视频（取决于是否选中“视频模式”）。
2. 更改网络摄像头（当您拥有不止一个时）。罗技网络摄像头在被选中时前部都会亮起。
3. 调整摄像头设置。
4. 激活或取消“计时器”功能。激活之后，拍摄照片或视频之前会有三秒钟的倒计时。
5. 打开（录制视频）或关闭（拍摄照片）“视频模式”。
6. 单击或轻点箭头滚动所拍照片和视频。
视频录制由右下角的计时器和播放按钮指示：

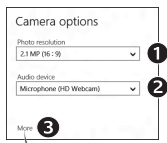


提示： 摄像头应用程序可让您轻松快捷地使用网络摄像头最常用的功能。如果想要利用网络摄像头提供的增强功能，比如动作检测，请从 logitech.com/downloads 上下载罗技网络摄像头软件。

调整摄像头设置

罗技软件会根据您的环境自动优化设置。要调整设置，请选择“摄像头”选项。可在摄像头应用程序（请参阅前一页）和支持网络摄像头的 Metro 应用程序中选择。


选择拍摄图片和视频（处于“视频模式”中时）的分辨率。



1. 如果有多个麦克风，请选择其中一个录制视频声音。
 2. 要享用数字缩放和移动等增强功能，请访问“更多选项”。
 3. 如果“更多选项”窗格没有显示罗技标志和提供增强功能选项，可能是由于首次连接摄像头时罗技软件未能正确安装。要重新安装，请访问 Windows Store 选择罗技摄像头控制器。
 4. 将镜头拉近或拉远以显示或隐藏周围环境。
 5. 拉近之后，拖动白色方框进行平移（调节网络摄像头的对焦区域）。
 6. 使用“面部跟踪”确保您始终处在画面之中。
 7. 享受语音清晰的对话，免受背景噪声的干扰。
- 取决于摄像头的可用功能，您可以通过滚动访问高级设置。

分享现有照片和视频

您可以通过电子邮件、Twitter、Facebook®、YouTube® 或者 Microsoft SkyDrive® 分享照片和视频。按下列步骤进行：

1. 在摄像头应用程序中滚动选择想要分享的照片或视频。
2. 在 Charm 工具栏中选择“分享”（或按  - H）：

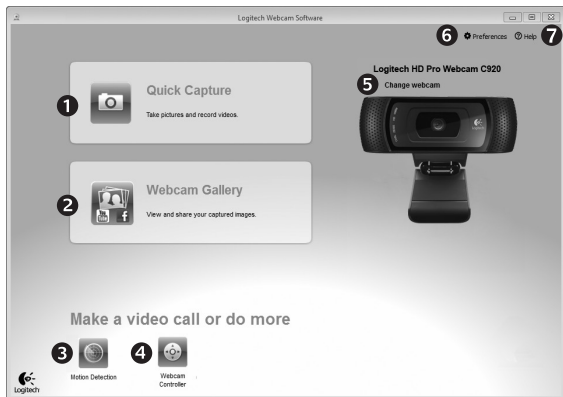


3. 选择分享照片或视频所用的媒体。

在 Windows 7 和 Windows Vista 中使用网络摄像头

罗技网络摄像头为您提供使用和控制网络摄像头所需的一切功能。从 Windows® “开始” 菜单启动软件，或右键单击 Windows 工具栏中的摄像头图标。

了解罗技网络摄像头软件



1. 拍摄照片和视频。
2. 通过电子邮件、Facebook、或 YouTube 查看和分享拍摄的图片。
3. 通过检测到的动作触发视频拍摄。
4. 在视频通话时控制网络摄像头。
5. 更改网络摄像头（当您拥有不止一个时）。
6. 打开罗技网络摄像头软件设置。
7. 打开帮助面板。

拍摄视频和照片



“快速拍摄” 让您可以轻松地拍摄照片和录制视频。

网络摄像头设置简单、操作便捷：

1. 预览窗口
2. 拍摄模式：照片/视频
3. 拍摄按钮
4. 网络摄像头控键
5. 照片缩略图
6. 视频缩略图
7. 单击缩略图以进入图库

使用图库进行查看和分享



点击图库 (1) 中的图像缩略图可在预览窗口 (2) 中打开该视频或照片。您可以执行以下操作：

- 将视频或照片文件以附件形式添加至电子邮件 (3)
- 编辑照片或拼接视频 (4)
- 上传照片或视频至 Facebook (5)
- 上传视频至 YouTube (6)

您也可以将图库图像拖放至其中一项功能的窗口上 (3-6 项) 以启动编辑应用程序，添加附件或进行上传。

使用运动检测



- 将网络摄像头设置为当其检测到运动时开始录制视频。
- 调整拍摄的视频时间长度和检测灵敏度。
- 拍摄的视频将自动储存至电脑。
- 查看“图库”中的内容或使用“一键上传”窗口将其上传。

在视频通话中对网络摄像头进行微调



1. 在视频通话中启动网络摄像头控制器。
2. 上下左右移动，找到最佳视角。
3. 将镜头拉近或拉远以显示或隐藏周围环境。
4. 使用面部跟踪确保您一直处于画面之中。
5. 享受语音清晰的对话，免受背景噪声的干扰。
6. 使用 RightLight 针对较差的光照环境进行校正。
7. 选择自动对焦或手动对焦。
8. 调整网络摄像头高级设置。

www.logitech.com/support

Table of Toxic and Hazardous Substances/Elements and their Content

產品中有毒有害物質或元素的名稱及含量
 根据中國<<電子信息產品污染控制管理辦法>>

Webcam 網絡攝像頭						
有毒有害物質或元素						
部件名稱	鉛 (Pb)	汞 (Hg)	鎘 (Cd)	六價鉻 (Cr(VI))	多溴聯苯 (PBB)	多溴二苯醚 (PBDE)
電纜 Cable	X	O	O	O	O	O
電路板組件 PWAs	X	O	O	O	O	O
塑料外殼 Plastic enclosure	O	O	O	O	O	O
塑料部件 Plastic parts	O	O	O	O	O	O
鏡頭 Lens	O	O	O	O	O	O

O = 表示該有毒有害物質在該部件所有均質材料中的含量均在 SJ/T11363-2006 標準規定的限量要求以下。
 X = 表示該有毒有害物質至少在該部件的某一均質的含量超出 SJ/T11363-2006 標準規定的限量要求。

表中標有“X”的所有部件都符合歐盟 RoHS 法規

“歐洲議會和歐盟理事會 2003 年 1 月 27 日關於電子電器設備中限制使用某些有害物質的 2002/95/EC 號指令”

注：環保使用期限的參考標取決於產品正常工作的溫度和濕度等條件





www.logitech.com

© 2012 Logitech. All rights reserved. Logitech, the Logitech logo, and other Logitech marks are owned by Logitech and may be registered. Microsoft, Windows, and the Windows logo are trademarks of the Microsoft group of companies. All other trademarks are the property of their respective owners. Logitech assumes no responsibility for any errors that may appear in this manual. Information contained herein is subject to change without notice.

© 2012 Logitech。著作权及其他知识产权声明：本产品及其包装与相关手册文件上所印载的「罗技」 「Logitech」，以及其他由罗技公司创作或发明之图案、文字、软件，其所存之知识产权或其他权利（包括但不限于商标权、著作权、专利权），皆属罗技公司所有并保留一切权利。凡未经合法授权而使用或复制上述罗技权利，将依法追究。其他非罗技商标，仍由各该商标所有人拥有其权利。罗技对于本手册中可能出现的任何错误不承担任何责任。本文中包含的信息如有更改，恕不事先通知。

620-003576.005