

# G535

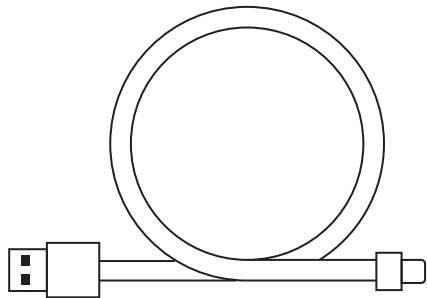
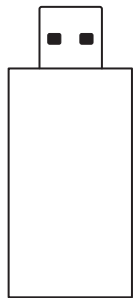
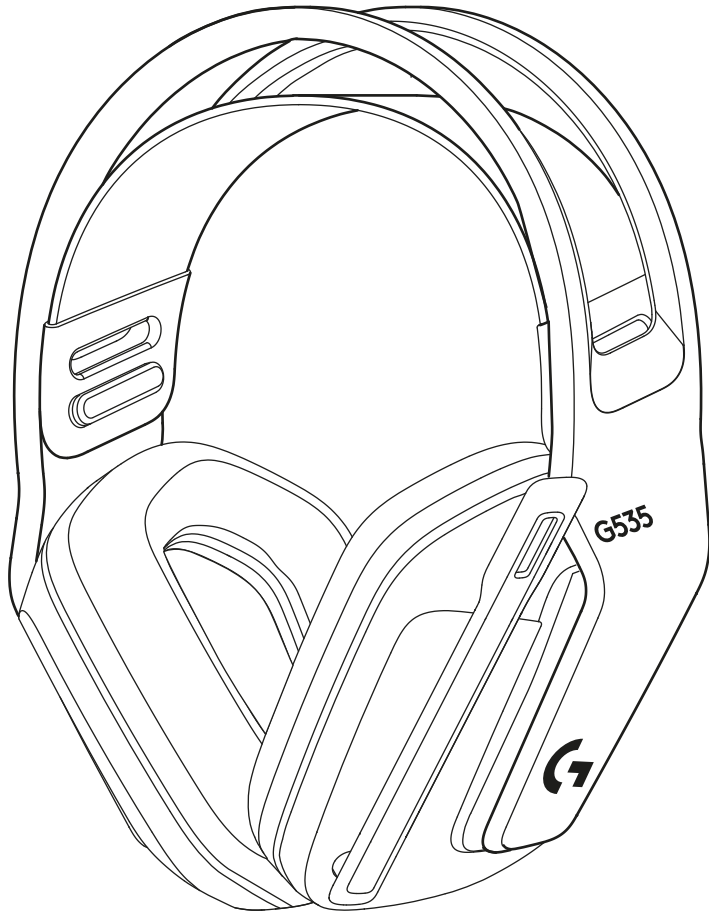
LIGHTSPEED Wireless Gaming Headset

Casque gaming sans fil LIGHTSPEED

**SETUP GUIDE | GUIDE D'INSTALLATION**



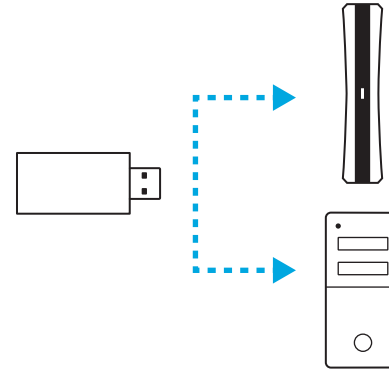
logitech 



ENGLISH . . . . .	3
FRANÇAIS. . . . .	7
ESPAÑOL . . . . .	11
PORTUGUÊS . . . . .	15

## SETUP INSTRUCTIONS

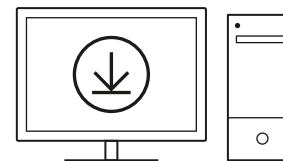
- Insert receiver into the USB port of your PC or PlayStation® 5.



- Short press to turn ON.

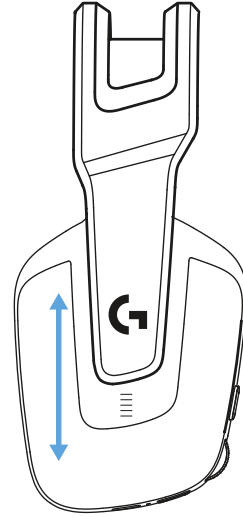


- (Optional) Download Logitech G HUB software to access advanced features. Download at [logitechG.com/ghub](https://logitechG.com/ghub)

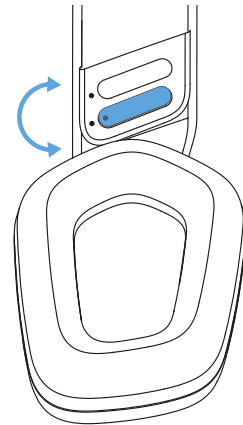


[logitechG.com/ghub](https://logitechG.com/ghub)

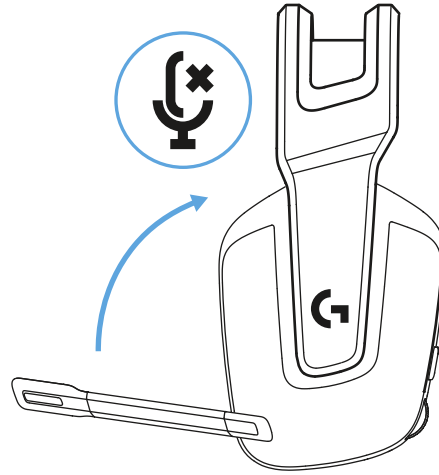
- The earcups can be adjusted up and down.



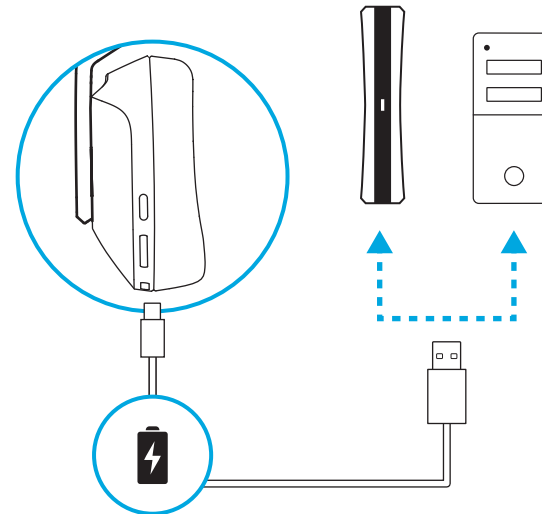
- The length of the headband can be adjusted.



- Flip boom up to mute.

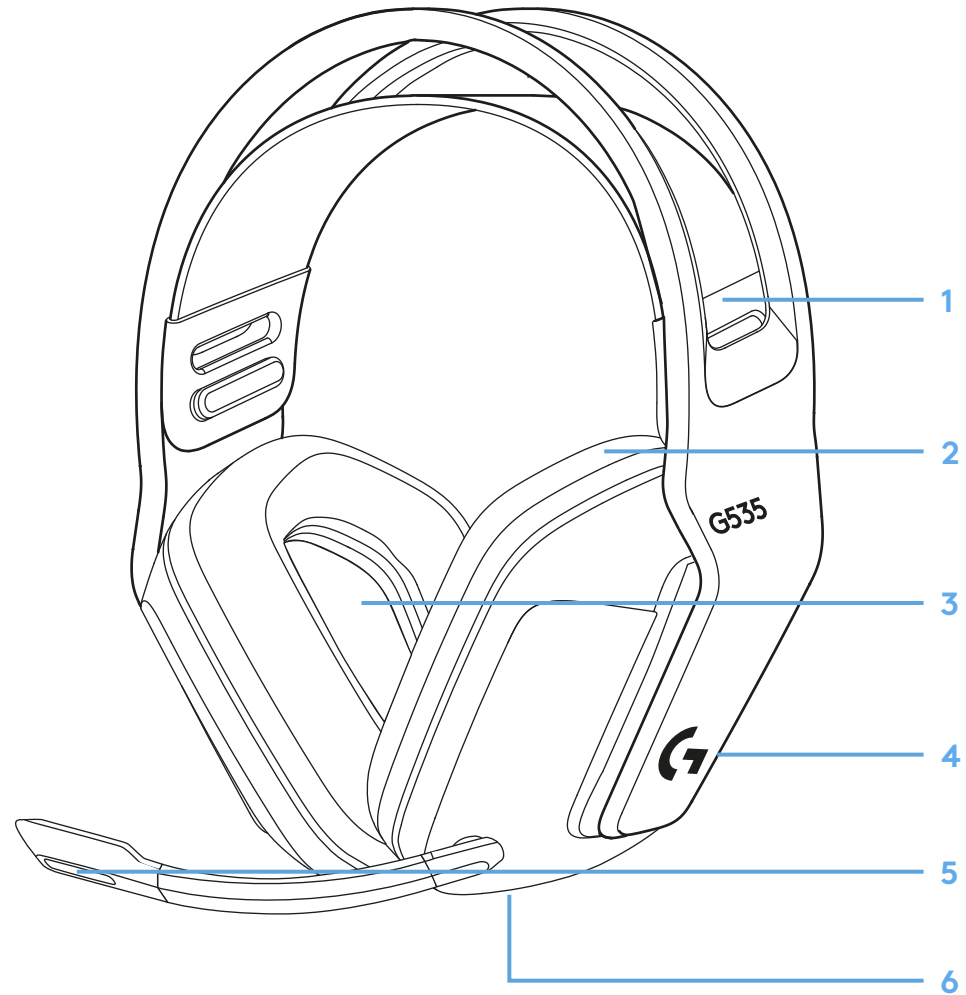


- Charge Headset when low on battery.



## FEATURES

- 1 Adjustable, reversible suspension band
- 2 Memory foam earpads
- 3 40 mm drivers
- 4 On-ear volume control
- 5 Flip-to-mute 6-mm mic
- 6 USB-C charging port

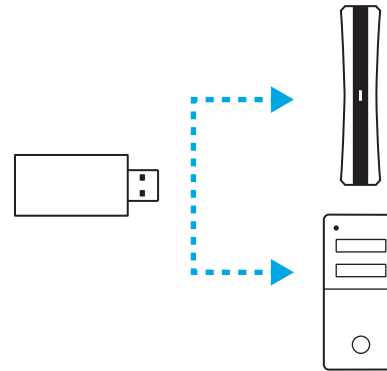


## FREQUENTLY ASKED QUESTIONS

[logitechG.com/support/G535](https://logitechG.com/support/G535)

# INSTRUCTIONS D'INSTALLATION

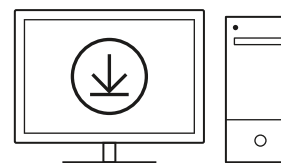
- Insérez le récepteur dans le port USB de votre PC ou de votre PlayStation® 5.



- Appuyez brièvement pour l'allumer.

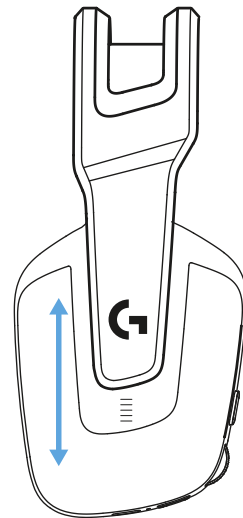


- (Facultatif) Téléchargez le logiciel Logitech G HUB pour bénéficier de fonctionnalités avancées. Téléchargez-le sur [logitechG.com/ghub](https://logitechG.com/ghub)

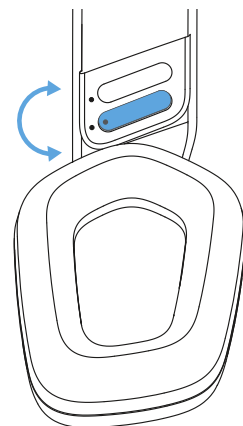


[logitechG.com/ghub](https://logitechG.com/ghub)

- Les coques peuvent être ajustées vers le haut et vers le bas.

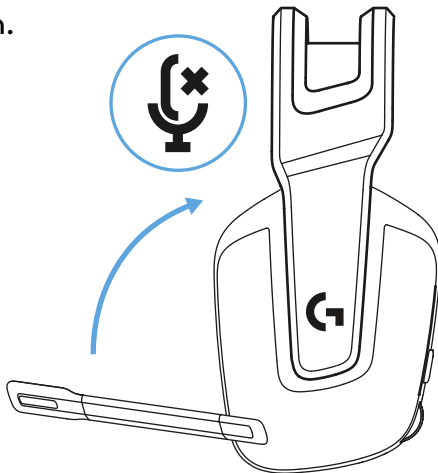


- La longueur du bandeau peut-être ajustée.

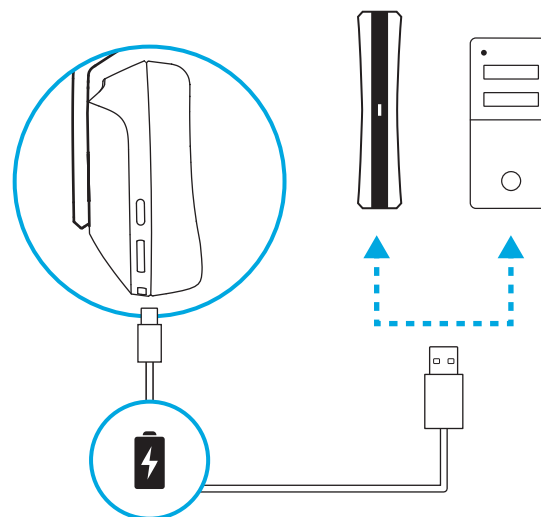




- Déplacez la tige du micro vers le haut pour couper le son.

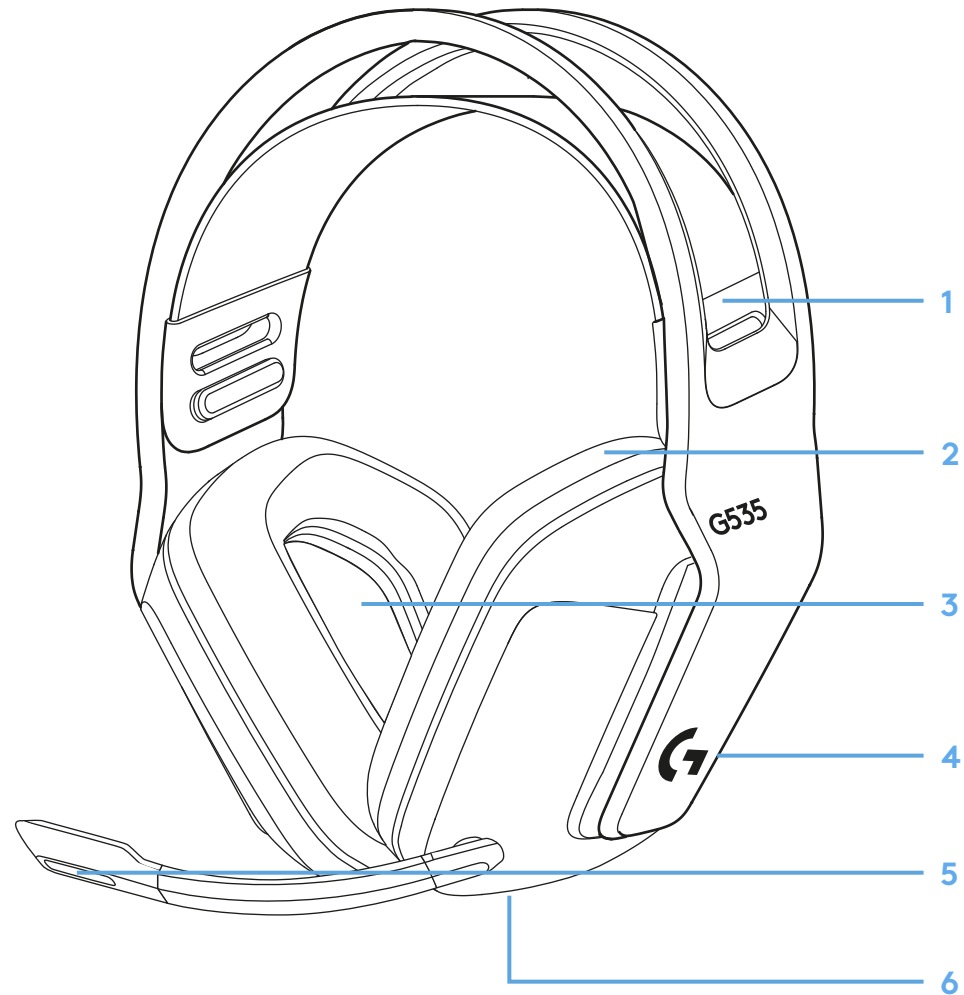


- Chargez le casque lorsque la batterie est faible.



## CARACTÉRISTIQUES

- 1 Bandeau de suspension réglable et réversible
- 2 Oreillettes à mémoire de forme
- 3 Transducteurs 40 mm
- 4 Contrôle du volume sur l'oreillette
- 5 Micro 6 mm avec fonction sourdine flip-up
- 6 Port de charge USB-C

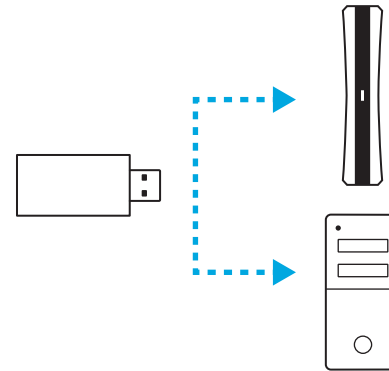


## QUESTIONS FRÉQUENTES

[logitechG.com/support/G535](https://logitechG.com/support/G535)

# INSTRUCCIONES DE CONFIGURACIÓN

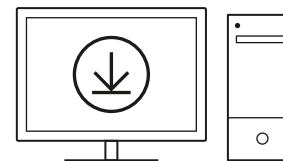
- Inserta el receptor en el puerto USB de tu PC o PlayStation® 5.



- Pulsación corta para ENCENDER.

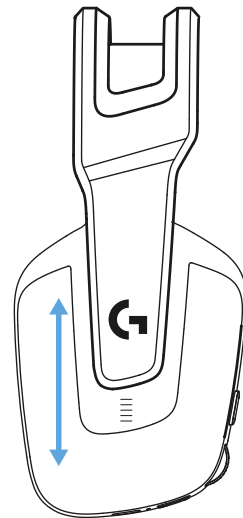


- (Opcional) Descarga el software Logitech G HUB para acceder a funciones avanzadas. Descargable desde [logitechG.com/ghub](https://logitechG.com/ghub)

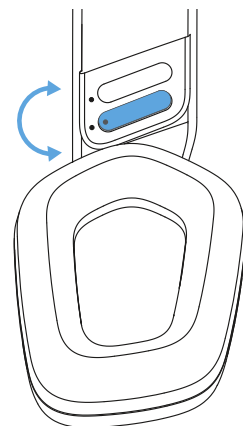


[logitechG.com/ghub](https://logitechG.com/ghub)

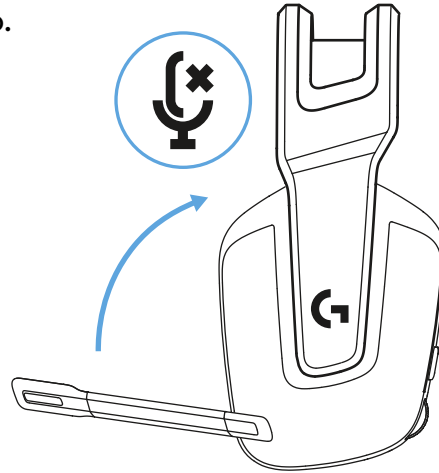
- Las copas se pueden ajustar hacia arriba o hacia abajo.



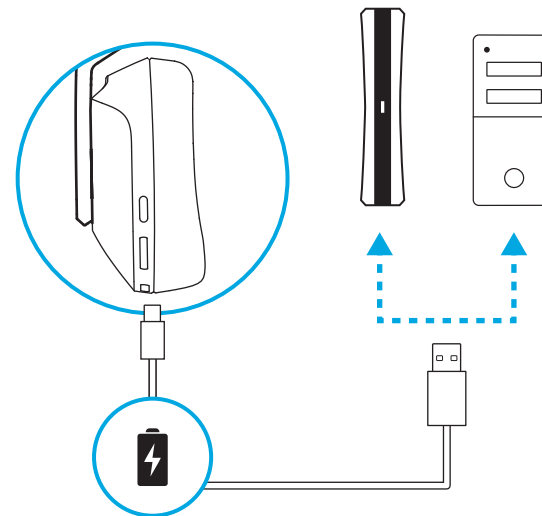
- La longitud de la diadema se puede ajustar.



- Gira hacia arriba la varilla del micrófono para silenciarlo.

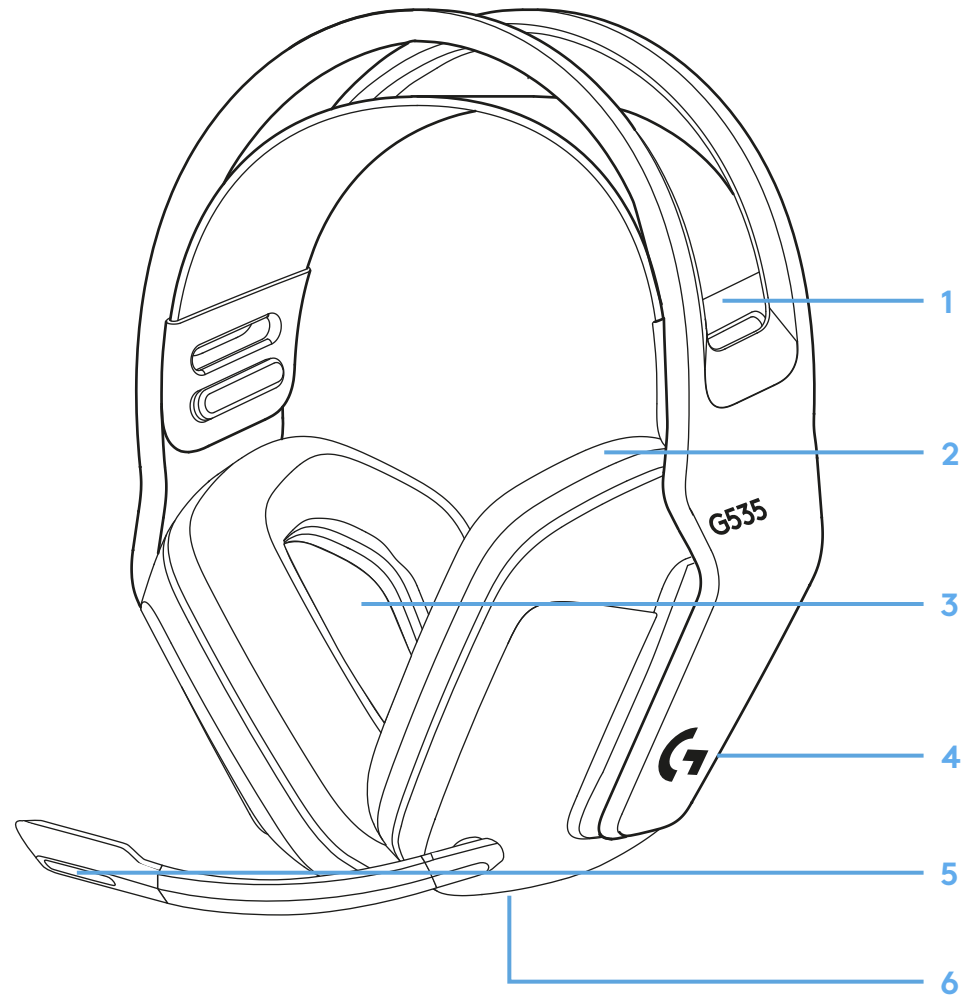


- Carga los audífonos cuando quede poca batería.



## CARACTERÍSTICAS

- 1 Banda de suspensión ajustable y reversible
- 2 Almohadillas de espuma viscoelástica
- 3 Transductores de 40 mm
- 4 Control de volumen en el audífono
- 5 Micrófono volteable para silenciar de 6 mm
- 6 Puerto de carga USB-C

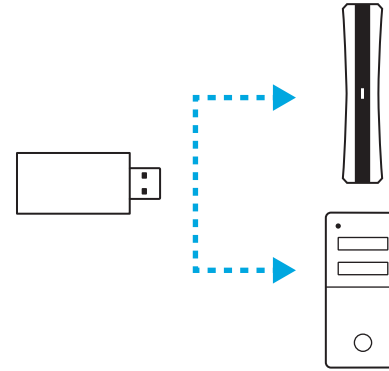


## PREGUNTAS MÁS FRECUENTES

[logitechG.com/support/G535](https://logitechG.com/support/G535)

# INSTRUÇÕES DE CONFIGURAÇÃO

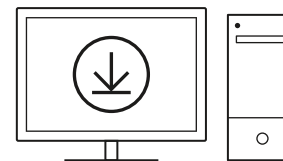
- Insira o receptor na porta USB do PC ou PlayStation® 5.



- Pressione brevemente para ligar.

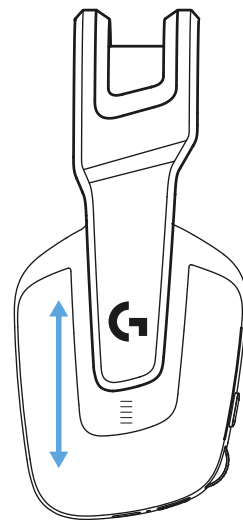


- (Opcional) Baixe o software Logitech G HUB para acessar recursos avançados. Download em [LogitechG.com/GHUB](https://LogitechG.com/GHUB)

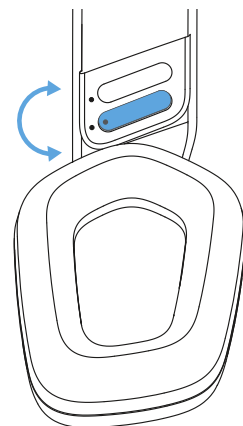


[logitechG.com/ghub](https://LogitechG.com/GHUB)

- Os fones podem ser ajustados para cima ou para baixo.

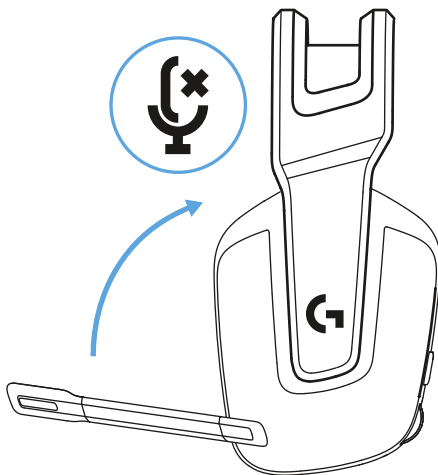


- O comprimento do arco de cabeça pode ser ajustado.

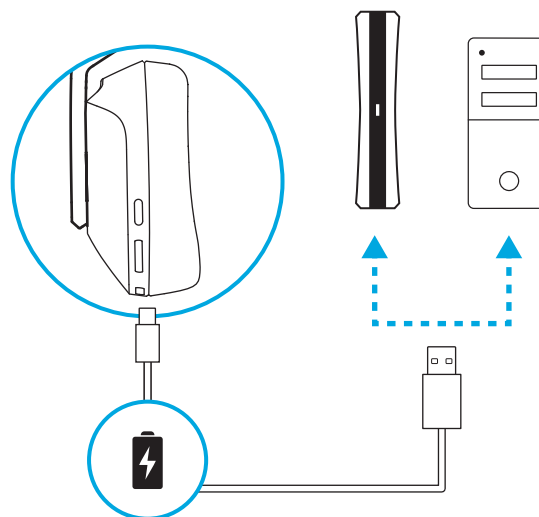




- Mova o braço do microfone para cima para silenciar.

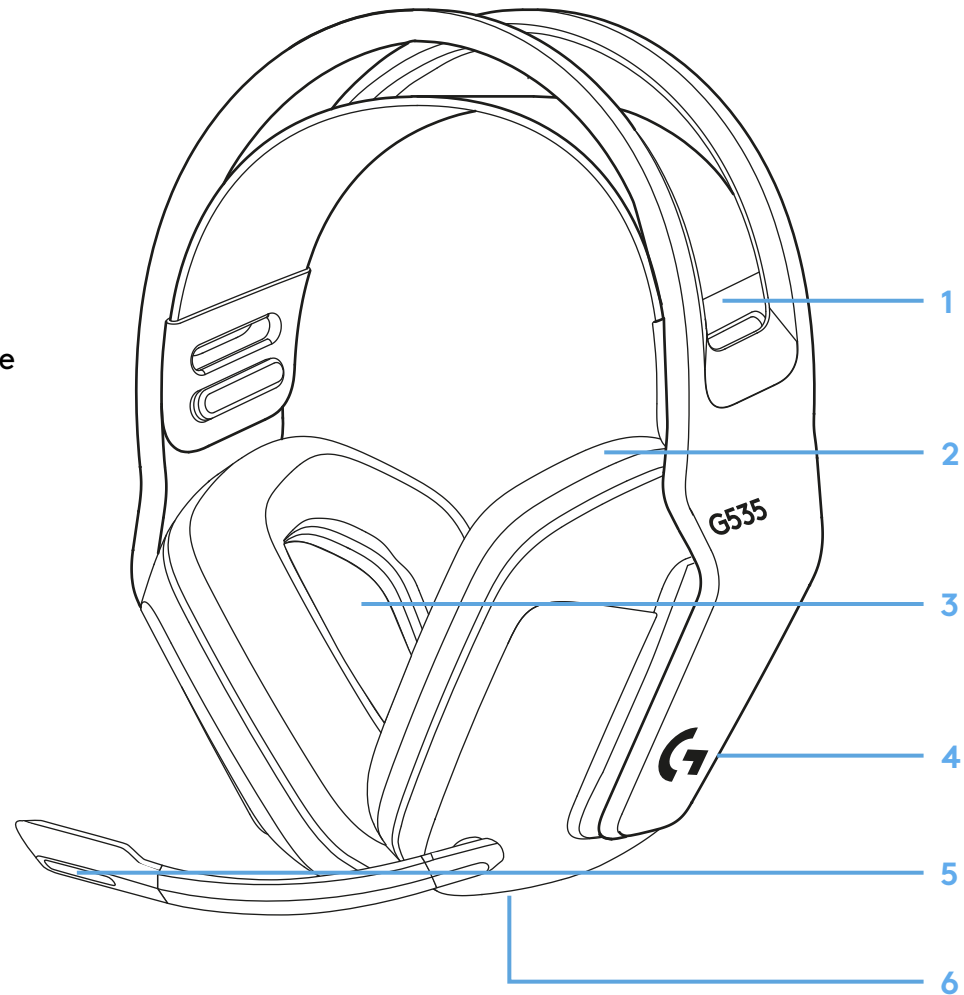


- Carregue o headset quando a bateria estiver fraca.



## RECURSOS

- 1 Faixa de suspensão ajustável e reversível
- 2 Fones acolchoados de espuma viscoelástica
- 3 DRIVERS de 40 mm
- 4 Controle do volume na orelha
- 5 Microfone de 6 mm com funcionalidade levantar-para-silenciar
- 6 Porta de carregamento USB-C



## PERGUNTAS FREQUENTES

[logitechG.com/support/G535](https://logitechG.com/support/G535)



©2024 Logitech. Logitech, Logitech G, Logi and their respective logos are trademarks or registered trademarks of Logitech Europe S.A. and/or its affiliates in the U.S. and other countries. All other trademarks are the property of their respective owners. Logitech assumes no responsibility for any errors that may appear in this manual. Information contained herein is subject to change without notice and any use of such marks by Logitech is under license.

©2024 Logitech. Logitech, Logitech G, Logi et leurs logos respectifs sont des marques commerciales ou déposées de Logitech Europe S.A. et/ou de ses sociétés affiliées aux États-Unis et dans d'autres pays. Toutes les autres marques sont la propriété exclusive de leurs détenteurs respectifs. Logitech décline toute responsabilité en cas d'erreurs susceptibles de s'être glissées dans le présent manuel. Les informations énoncées dans ce document peuvent faire l'objet de modifications sans préavis et toute utilisation de ces marques par Logitech fait l'objet d'une licence.

WEB-621-002586 002