

Empowering Productivity, Inspiring Confidence

How Logitech Personal Workspaces Elevate the
Employee's Experience from Ordinary to Extraordinary





From Ordinary to Extraordinary

Let's be honest: peripherals don't always make the top of IT's priority list. Too often, these tools are viewed as baseline accessories, rather than strategic choices. Or even worse, treated as afterthoughts, everyday accessories bundled with laptops or picked up at the lowest cost.

But here's the reality: those "ordinary" tools sit at the heart of how employees work every day. They're the first things our employees touch in the morning and are with us until the workday ends. And in today's distributed work world, where employees bounce between offices, homes, airports, and shared spaces, those everyday tools can be the difference between frustration and a sense of flow.

That's why it's time to pay attention to the personal workspace. Well-designed tools can bridge the gap between "functional" and serving their purpose effectively. They become trusted companions that remove friction, support well-being, and unlock higher productivity.

In other words, they can transform your employees' daily experience from ordinary to extraordinary.

This eBook explores why the personal workspace deserves attention now, the hidden costs of fragmented approaches, and how Logitech's personal workspace solutions portfolio delivers an integrated, scalable ecosystem that elevates the everyday experience. As an independent analyst, my goal here is not to hype a product but to provide a clear-eyed view: where the problems are real, where this portfolio fits, and why it should matter to IT and business leaders.

The Personal Workspace: Why It Demands Attention Now

The personal workspace has evolved from a fixed cubicle to a dynamic ecosystem spanning home offices, corporate campuses, co-working spaces, and travel hubs. For the first time in history, IT and Facilities leaders must plan for tools that work consistently across multiple, interconnected environments.

The personal workspace is no longer a desk setup; it's a strategic enabler for productivity, well-being, and IT efficiency.

Yet too often, the personal workspace is treated as an afterthought, a "one-size-fits-all" approach where every employee gets the same basic kit. These devices are frequently inexpensive, bundled with laptop or desktop purchases, and rarely are purpose-built for roles/tasks employees do every day. What

looks efficient on paper often becomes a hidden tax: poor-quality peripherals frustrate employees, add to IT's support load, and quietly erode productivity.

"The workspace should fuel productivity and even make the everyday tools people rely on feel like trusted companions."

Employees expect:

Productivity without friction

Devices that "just work" without constant troubleshooting.

Comfort and well-being

Tools designed for comfort and that prevent fatigue.

Consistency

The same experience no matter where they work.

IT leaders need:

Manageability

Visibility and control across thousands of devices.

Security and compliance

Assurance that every endpoint is protected.

Scalability

The ability to roll out solutions globally without adding overhead.

Seamless compatibility

Devices that "just work" within preferred ecosystems like Microsoft Teams, Zoom, Google Meet and Voice, Windows, or Chrome, minimizing support issues.

The Hidden Costs of Fragmented Experiences

Fragmentation doesn't announce itself with alarms or error messages. It creeps in quietly, showing up as minor inefficiencies, frustrated employees, and growing IT complexity. But make no mistake, the costs are real and unsustainable.

Peripheral Friction

- || An unresponsive mouse or lagging keyboard may seem small, but like any interruption, it can break focus and take time to regain flow.
- || A Slack study found that small business owners lose **96 minutes per day**¹ due to tech inefficiencies. That's more than 400 hours a year, nearly 10 workweeks.

Remote and Hybrid Norms

- || As of April 2025, **20.8% of private industry workers**² perform at least some of their work remotely.
- || That means IT must support employees across home offices, hot desks, coffee shops, and airports, all while maintaining consistency.

Productivity Benefits

- || Research shows flexible work setups can yield **35%–40% higher productivity**³ and stronger mental health. However, for distributed work to be effective, employees need to have a seamless experience across all locations.
- || Without reliable tools, flexibility can turn into frustration. Employees burn energy troubleshooting instead of focusing on their work.

IT Management Burden

- || A 2025 survey found **67% of IT leaders lack visibility**⁴ into all organizational devices.
- || **58% report high overhead** just managing fragmented toolsets.

The Hidden Costs of Fragmentation



Hidden Cost	Employee Impact	IT Impact
Peripheral friction	Lost focus, digital fatigue	More support tickets
Remote/hybrid norms	Inconsistent experiences	Harder to secure/manage
Productivity loss	Lower engagement and well-being	Reduced ROI on flexibility
IT overhead	Delays in support and fixes	Increased costs, less scale

Analyst Perspective:

Why Consistency and Manageability Are Non-Negotiable

Employees no longer tolerate clunky tools. They want the same intuitive, “consumer-grade” experience at work that they enjoy with personal devices. For many, the baseline expectation is simple: *“It just works.”*

And with Gen Z entering the workplace, those expectations are only intensifying. This generation of digital natives has grown up with seamless technology in every aspect of life, and they bring those same standards into their professional environments.⁵ In structured conversations with IT leaders, which we analyze for trends, one consistent theme is how digital natives push for workplace technology that feels as seamless as the tools they use personally.

But IT leaders face a harder equation. Budgets are under pressure, skills are scarce, and teams are stretched across multiple environments. Complexity is their biggest enemy.

The mandate is clear:

- **Consistency** ensures employees can move between environments without losing productivity.
- **Manageability** ensures IT can support at scale, without drowning in administrative overhead.

Failing to deliver on these imperatives risks not just productivity loss, but also rising employee dissatisfaction. In today’s competitive labor market, the quality of workplace tools can influence talent retention outcomes. In one study, nearly half of employees reported stress, depression, or anxiety related to their work⁶. While many factors contribute, even seemingly small frustrations – such as a lagging keyboard or a glitchy mouse – can add to the strain. When employees are equipped with low-quality tools, it sends a signal that they are undervalued, further compounding disengagement.

“Consistency and manageability aren’t optional. They’re the foundation for productivity, well-being, and IT efficiency.”

PRODUCT SPOTLIGHT



Zone Wireless 2 ES for Business

Key features include:

Adaptive hybrid Active Noise Cancellation (ANC): Dynamically adjusts noise cancellation in real-time to minimize background noise.

Custom-designed 40mm drivers: Optimized for calls, music, and ANC.

Premium microphones: Two noise-canceling mics with AI-based algorithms for clear calls in open offices.

Comfort: Headset strap distributes weight evenly, and earpads rotate and tilt for a perfect fit.

[View the Product](#)

Why Ecosystem Thinking Outperforms Piecemeal Deployments

When companies approach personal workspaces ad hoc, buying devices one category at a time, they create friction for everyone.

FOR EMPLOYEES:

- || Different mice and keyboards across locations force context switching.
- || Audio and video quality vary depending on the device at hand.
- || Every meeting starts with troubleshooting instead of collaboration.

FOR IT:

- || Managing multiple vendors and dashboards eats up resources.
- || Support tickets spike as employees struggle with inconsistent setups.
- || Scaling globally is inefficient, costly, and error-prone.

By contrast, a single ecosystem ensures consistency, streamlined IT workflows, and long-term ROI. The personal workspace should feel natural and intuitive - never burdensome. Ecosystem thinking flips the equation.

A unified approach ensures:

Consistency

Reliable tools wherever you work.

Efficiency

Centralized management for provisioning, updates, and troubleshooting.

ROI

Reduced downtime, fewer support tickets, and lower long-term costs.



Introducing the Logitech Personal Workspace Portfolio:

A Tiered Approach for Every Worker

From my point of view, what stands out about Logitech's approach is the **ecosystem-first mindset**. Rather than treating accessories as one-off add-ons, Logitech has built a portfolio where every device plays a role in a larger, cohesive system. This structure isn't just about product variety. It's about intentional design that maps directly to the diverse needs of the workforce.

The portfolio spans four tiers—**Value**, **Core**, **Advanced**, and **Ergonomic**—each aligned to specific employee roles and workplace scenarios. In practice, this makes it easier for IT decision-makers to match the right tools to the right users while maintaining consistency across the organization.

VALUE: Reliable, cost-effective tools for standard office needs, often included in large-scale laptop deployments.

CORE: Mainstream choices that balance performance, price, and IT manageability. This is where Logitech continues to expand with new devices such as the **Signature Slim Solar+ K980 keyboard for Business** (a self-charging keyboard powered by light), and the **Zone Wired 2/Zone Wireless 2 ES for Business** headsets that feature adaptive hybrid ANC and noise-canceling mics for calls and collaboration.

ADVANCED: Premium tools for skilled professionals and power users who need performance, precision, and customization. Products like the new **MX Master 4 for Business** mouse highlight this tier, Logitech's iconic mouse, reengineered for precision and performance with and deep software integration for creative, engineering, and technical workflows.

ERGONOMIC: Specialized devices designed for comfort and long-term well-being, such as split keyboards and vertical mice that help reduce strain for employees with specific ergonomic needs.

This tiered approach ensures IT can deliver role-based choice while avoiding the inconsistency and support burden of piecemeal device purchases. Because all devices are part of a **unified Logitech ecosystem**, they work seamlessly together, integrate with software tools like Sync and Tune, and align with enterprise standards for manageability and global scale.

In a market crowded with fragmented solutions and piecemeal accessories, this is the real signal: a tiered framework that gives IT leaders clarity.

Tier	Target Users	Positioning	Key Features
VALUE	Operational/ administrative roles	Entry-level, budget-friendly	Reliable, business-certified basics
CORE	Broad roles (finance, sales, HR)	Balanced quality and affordability	Wired and wireless, scalable
ADVANCED	Power users (developers, analysts, creatives)	Premium, workflow-optimized	Customizable tools, advanced features
ERGONOMIC	Employees seeking comfort and well-being	Ergonomics-first design	Reduces strain, boosts wellness

Proof Points That Separate Logitech from the Pack

What makes Logitech stand out is not just individual devices, but the ecosystem-wide benefits. Here are some of the features I found most noteworthy during my evaluation of the Logitech Personal Workspace portfolio:



User-Centric Design

User-centric design is about anticipating how people work and making technology fade into the background. Logitech has built its reputation on devices that feel natural and intuitive, from the sculpted Lift mouse to MX Keys to the seamless controls of Zone headsets.

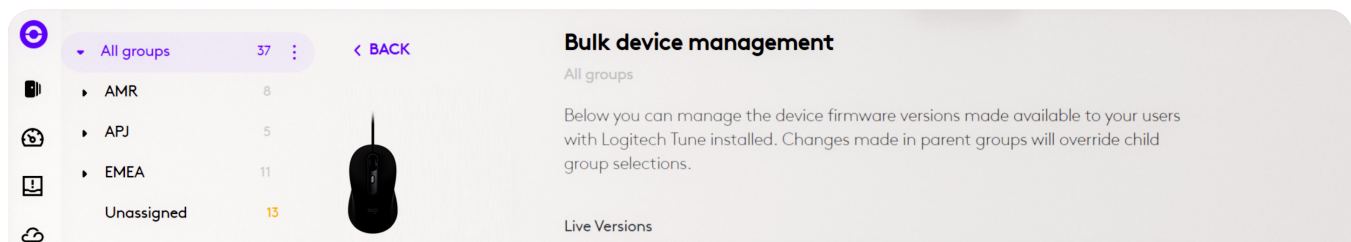
Why does this matter? Throughout Logitech's personal workspace solutions, design directly drives adoption and productivity. Tools that feel awkward create resistance and support tickets. Tools that feel effortless keep employees focused on their work, not their gear.

User-centric design isn't limited to traditional input devices. Logitech extends the same philosophy to the broader workspace:

|| **Logi Dock Flex** simplifies desk booking and hot-desking in hybrid offices.

|| **Ergonomic innovations** like split keyboards and vertical mice reduce strain and support long-term comfort.

By making devices feel like trusted companions, Logitech reduces support friction and makes daily work more comfortable.



Beyond Devices: The Role of Sync and Logi Tune

Logitech Sync

- Centralized, cloud-based dashboard for a broader ecosystem to manage everything from personal devices to desks and conference rooms.
- Remote monitoring, proactive alerts, and seamless updates.
- Insights into utilization and performance to guide lifecycle planning. For example, IT can track the overall adoption of personal devices enabling informed decisions in the future.

Logi Tune

- Personalization for employees with audio, video, and button configurations.
- Easy controls for mute, ANC, mic levels, and webcam settings.
- Real-time troubleshooting that reduces IT dependence.

Together, these tools provide a dual benefit: increased IT efficiency and enhanced employee satisfaction.



AI and Intelligence

Logitech integrates intelligence across the ecosystem, not siloed within a single device:

- || **RightSight** and **RightSound** use AI to automatically frame speakers, cancel background noise, and enhance clarity.
- || **AI-driven controls** like dedicated buttons and shortcuts streamline everyday tasks.
- || **Platform integration** with Zoom, Microsoft Teams, and Google Meet ensures productivity without extra steps.

AI is not a gimmick here. It is woven into the everyday workflow.



Ecosystem Reliability and Scale

Logitech delivers global consistency, sustainability, and breadth that other vendors struggle to match:

- || **Global quality and support** for multisite offices.
- || **Portfolio breadth** spanning personal peripherals to conference room solutions.
- || **Sustainability leadership** with low-impact materials like post-consumer recycled plastics and low-carbon aluminum, and recycled cobalt in batteries. FSC™-certified packaging and power efficiency.

This combination of reach, responsibility, and range reinforces why Logitech is not just a device maker but a partner that organizations can count on at scale.



IT Manageability

Managing thousands of endpoints is a significant challenge. Logitech simplifies this with tools that give IT control and visibility:

- || **Logitech Sync** centralizes fleet management.
- || **Cross-platform support** ensures consistency across Windows, macOS, and Chrome OS.
- || **Security and compliance features** align updates with enterprise standards.

Instead of piecemeal management, IT gets a single pane of glass for deployment, monitoring, and support. The result is simpler operations, faster response times, and confidence that the environment stays consistent and secure.

PRODUCT SPOTLIGHT



MX Master 4 for Business

Key features include:

Enhanced Connectivity: 2x more powerful with an advanced radio chip, optimized antenna placement, and a Logi Bolt USB-C receiver, providing a fully encrypted, FIPS-compliant connection.

Sensor Technology: 8K DPI Darkfield laser sensor that works on any surface, including glass.

[View the Product](#)

Bridging Personal and Team Workspaces

One of Logitech's most distinctive advantages is its ability to connect personal and team workspaces into a single ecosystem. Most organizations treat these as separate investments, but that creates inconsistency and compounds complexity, especially as organizations scale.



The personal and team portfolios are designed to interconnect as a single ecosystem, delivering measurable benefits on both sides of the desk.

With Logitech, employees experience:

- Familiar interfaces across desk and meeting rooms (Tap, Logi Dock Flex, Tap Scheduler, Tune).
- Seamless transitions between personal and team workspace environments.
- Unified productivity features powered by the same AI enhancements.

For IT, the benefits are equally potent:

- One platform, Logitech Sync, manages both personal and team devices.
- Consistent platform integration and certification.
- Simplified training and support through standardization.

PRODUCT SPOTLIGHT



Zone Wired 2 for Business

Key features include:

Adaptive Hybrid ANC: Dynamically adjusts to different noise levels, with 5 modes including high/low ANC, adaptive, and transparency.

Noise-canceling microphone: Two mics with AI-based algorithms to suppress background noise, meeting Microsoft Teams premium microphone requirements for open offices.

Custom-designed 40 mm drivers: Optimized for calls, music, and enhanced ANC and bass performance.

[View the Product](#)



Competitive Positioning: **Where Logitech Stands Apart**

In a crowded market, Logitech's edge is clear:

Some competitors focus on niche, high-end products. Logitech balances enterprise-grade reliability with global deployment scale.

- || Others deliver single-category tools (like headsets or conferencing soundbars). Logitech spans the entire spectrum of office solutions.
- || Many embed AI in isolated devices. Logitech embeds AI consistently across its ecosystem, which doesn't require users to spend on high-end specialized devices, creating a more universally accessible AI-enabled ecosystem.

By combining innovation with usability and consistency, Logitech offers a cohesive experience across the entire workspace. It is this cohesion that enables Logitech to leverage expertise across personal and shared workspace devices, as well as collaboration with its platform partners, including Microsoft Teams, Google, and Zoom.

And while laptop manufacturers may bundle peripherals as secondary accessories, Logitech designs them as primary tools—obsessing over their design and user experience. This focus on interaction and usability has made Logitech the global leader in mice, keyboards, and webcams.

PRODUCT SPOTLIGHT



Signature Slim Solar+ K980 for Business

Key features include:

Powered by light: It's a self-charging keyboard that uses natural and artificial light, eliminating the need for charging cables or alkaline batteries.

Logi LightCharge technology: This efficient power management system allows the keyboard to work in virtually any light and includes a durable battery optimized to last up to 10 years.

Designed for sustainability: The keyboard is made with a minimum of 70% post-consumer recycled plastics and comes in FSC™-certified packaging.

[View the Product](#)

Analyst Take:

Logitech Personal Workspaces Driving Productivity and Strategic Value

The personal workspace is no longer just an employee concern. It is a strategic imperative for IT and business leaders.

Fragmented setups erode productivity, create hidden IT costs, and frustrate employees. A unified ecosystem solves these problems by delivering consistency, manageability, and long-term value.

Logitech's personal workspace portfolio is distinctive in its breadth, depth, and seamless integration, delivering solutions that support employees and IT alike. For employees, that means tools they can trust, devices that feel like reliable companions in their daily work. For IT, it means an enterprise-ready ecosystem that is simple to deploy, manage, and scale.

"When the workspace works, so does the workforce."

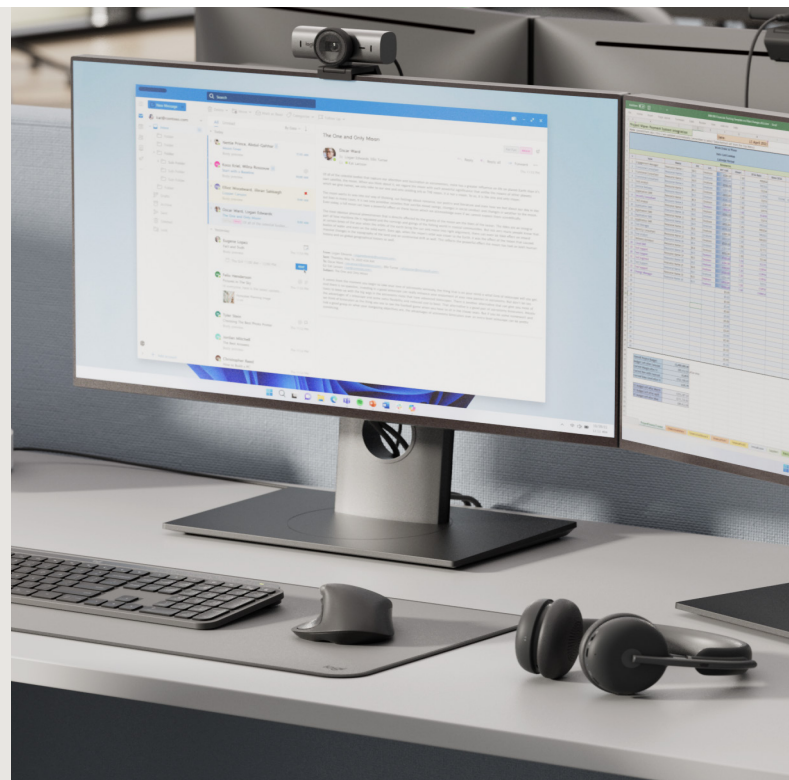
Craig Durr, Chief Analyst, The Collab Collective

Final Takeaway

Logitech Personal Workspace Portfolio delivers:

- II Role-based choice through Value, Core, Advanced, and Ergonomic portfolios.
- II User-centric design that boosts comfort and productivity.
- II Simplified IT management with centralized visibility and control for all Logitech for Business solutions.
- II Future-ready AI applied consistently across the ecosystem.

[Click to explore Logitech's complete personal workspace solutions portfolio](#)





¹ Salesforce. "Small Business Owners Are Losing an Average of 96 Minutes of Productivity Daily." *"Salesforce News"*, 14 Aug. 2024, <https://www.salesforce.com/news/stories/small-business-productivity-trends-2024/>

² U.S. Bureau of Labor Statistics. "Telework Rate for Private Industry Workers, April 2025." *"Economics Daily"*, 23 May 2025, <https://www.bls.gov/opub/ted/2025/telework-rate-down-for-federal-government-workers-in-april-2025.htm>

³ Bloom, Nicholas, Ruobing Han, and James Liang. "Hybrid Working from Home Improves Retention without Damaging Performance." *"Nature"*, vol. 630, no. 8018, 2024, pp. 920–925. <https://doi.org/10.1038/s41586-024-07500-2>

⁴ Scalefusion. "IT Leaders Are Facing Major Work-Device Blind Spots — and It's Putting Security at Risk." *"ITPro"*, 21 July 2025, <https://www.itpro.com/security/it-leaders-are-facing-major-work-device-blind-spots-and-its-putting-security-at-risk>

⁵ Hackl, Cathy. "Gen Z: The Future of Work and Play." *"Forbes"*, 7 Sept. 2020, <https://www.forbes.com/sites/cathyhackl/2020/09/07/gen-z--the-future-work--play/?sh=597d5358142e>

⁶ YouGov. "Half of British Workers Say They Feel Stressed at Work." *"YouGov"*, 19 Apr. 2023, <https://yougov.co.uk/society/articles/43172-half-british-workers-say-they-feel-stressed-work>

About Us



Craig Durr is the Chief Analyst and Founder of The Collab Collective, an industry analyst firm focused on workplace collaboration and communication. Through his work as an analyst, researcher, and keynote speaker, Craig has developed deep insight into the services, technologies, and devices that empower seamless connections between businesses, employees, and customers.

Beyond technology, Craig also researches the intricate human dimensions of work, categorizing his findings into the workforce, the workplace, and the workflows of the modern work experience. By unraveling these components, he helps to unveil the intricate interplay between technology, productivity, and business strategies essential to the future of work.

 cdurr@collab-collective.com

 [craigdurr](https://www.linkedin.com/in/craigdurr)

 [@craigdurr](https://twitter.com/craigdurr)



Offers deep insights into the evolving landscape of workplace communication and collaboration, combining data-driven analysis with a nuanced understanding of the workforce, workplace, and workflows shaping today's hybrid environments. Our analysts are experts in workplace collaboration, customer experience, and employee experience technologies, as well as enterprise applications for creativity and workflow management—providing a comprehensive understanding of how these solutions drive real-world business outcomes.

 www.collab-collective.com



Logitech designs software-enabled hardware solutions that help businesses thrive and bring people together when working, creating, gaming and streaming. As the point of connection between people and the digital world, our mission is to extend human potential in work and play, in a way that is good for people and the planet. Founded in 1981, Logitech International is a Swiss public company listed on the SIX Swiss Exchange (LOGN) and the Nasdaq Global Select Market (LOGI). Find Logitech and more of its business products and enterprise solutions at [logitech.com/business](https://www.logitech.com/business), the company [blog](#), [Logitech Business](#) or [@LogitechBiz](#).

 www.logitech.com