



## DATASHEET

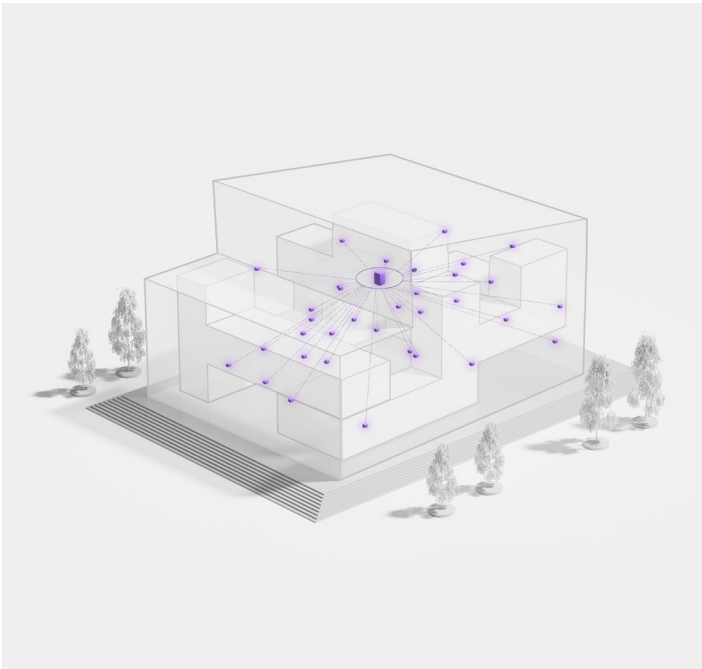
# LoRaWAN Gateway for Logitech Spot

### Indoor Kerlink gateway hub configured for Logitech Spot sensors

Connect hundreds of Logitech Spot sensors throughout an office or workspace with this indoor LoRaWAN gateway from Kerlink.

In locations without a Logitech CollabOS device like Tap Scheduler or Rally Bar, this gateway provides a connection hub for sensor data.

**Note:** LoRaWAN connectivity not available in all regions. [See here](#) for full details.



## One gateway, extended coverage

The gateway is able to connect hundreds of devices through its long-range, wide area network (LoRaWAN).

Note: Connection strength per site depends on building materials and urban environment density. See [this article](#) for guidance on placement.

## Find a central location

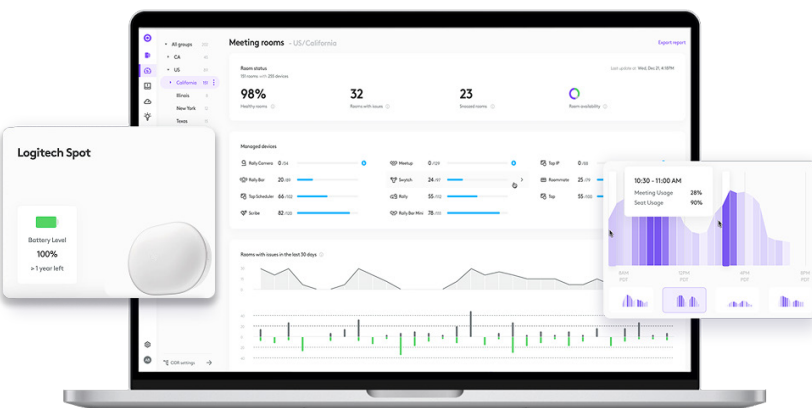
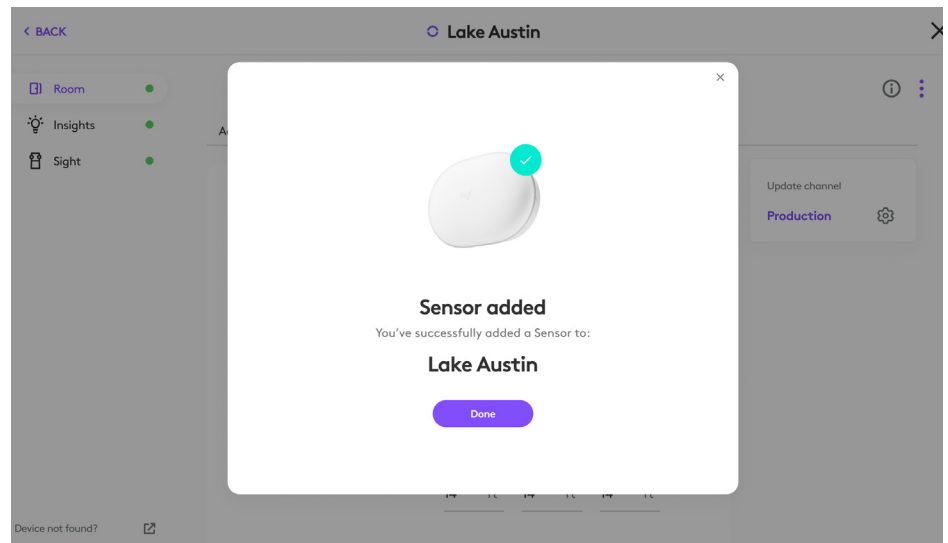
A strong setup starts with good central placement. Choose a location that maximizes coverage, like a server room or a room at the center of the building. Provision the gateway with Sync, then activate Spot sensors to complete the LoRaWAN connectivity. Be aware that dense materials like concrete and brick can interfere with signal strength\*.

\*Note: For best connectivity, see instructions on optimal antenna orientation in our [product support manual](#).

## Secure connectivity standard

The gateway connects to sensors via the secure LoRaWAN protocol, ensuring end-to-end encryption, and is separate from your WiFi network. For added security, it can be placed outside your network firewall and securely transmit all sensor data to the Sync platform for monitoring and management.

See this [article](#) for more on LoRaWAN.



## Simple to manage with Sync

Monitor and manage the gateway and Spot sensors via Sync, the Logitech platform for managing all your collaboration devices and spaces.

General	Sniffer for Listen Before Talk (LBT) Spectrum analysis compliant Casing: IP30 CPU: ARM Cortex A9 DDRAM 256MB 8GB eMMC (6GB available for user)	Connectivity	Ethernet 10/100 Mbps Backhaul connectivity: Wi-Fi 2.4GHz and Ethernet (RJ45) Rx Sensitivity: -141 dBm (SF12) TX Conducted Power: configurable from 5dBm to 27dBm LoRa swivel antenna 3 dBi peak gain
Dimensions	Height: 160 mm (6.30 in) Width: 90 mm (3.54 in) Depth: 35 mm (1.38 in) Weight: 162 g (5.75 oz)	Environmentals	Range -20 °C to +55 °C (for gateway only, without power supply) Humidity: 5% to 95%
Compatibility	Only compatible with Logitech Spot sensor in select countries, <a href="#">see here</a> for more details.  Firmware required for configuration and management. For more details, see <a href="http://hub.sync.logitech.com/logitech-spot">hub.sync.logitech.com/logitech-spot</a>	Security	SecureBoot (signed firmware) option SecureStorage (keys and certificates in secured area) using a Trusted Execution Environment (TEE), Secured links and backhaul protection (mTLS) Reboot (watchdog) and recovery to previous management config (or factory config if the boot issue is not fixed)
Battery and Power	Power supply (100-240V, 12V, 0.5A) with provided jack connector 2.5mm/5.5mm	Packaging Contents	Indoor LoRa gateway Power supply User documentation Regional plug adapters
Ports & Interfaces	RJ45 WPS push button Programmable LEDs: 1 x LED (green/red) for Power status, 1 LED (green/red) for Backhaul status, 1 LED (green/red) for LoRa® rf activity Rx/Tx USB (Type A): for configuration SMA or RP-SMA: for LoRa antenna Reset button	Warranty	Limited hardware warranty. Extended warranty available for purchase. For details, see: <a href="http://www.logitech.com/kerlink-lorawan-gateway">www.logitech.com/kerlink-lorawan-gateway</a>
Mounting	Wall mounting by 2 oblong holes or lay on a table (4 domes)	Part Numbers	Americas 950-000122 Asia Pacific, Israel 950-000123 Europe, Middle East, Africa 950-000124



[www.logitech.com/lorawan-gateway](http://www.logitech.com/lorawan-gateway)

Contact your reseller  
Or contact us at  
[www.logitech.com/business](http://www.logitech.com/business)

**Logitech Americas**  
3930 North First St  
San Jose, CA 95134 USA

**Logitech Europe S.A.**  
EPFL - Quartier de l'Innovation  
Daniel Borel Innovation Center  
CH - 1015 Lausanne

**Logitech Asia Pacific Ltd.**  
Tel : 852-2821-5900  
Fax : 852-2520-2230

© 2025 Logitech. LOGITECH is a registered trademark of Logitech Europe S.A. and/or its affiliates in the U.S. and other countries. LoRaWAN is a registered trademark of the LoRa Alliance. Kerlink is a trademark of KERLINK SA and its affiliates worldwide.

Published September 2025