

# Powerline Network Utility NA200 Help File

---

## TABLE OF CONTENTS

<b>TABLE OF CONTENTS</b> .....	<b>1</b>
<b>Powerline Network Utility Overview</b> .....	<b>2</b>
<b>What situations can Powerline Network Utility help me solve?</b> .....	<b>2</b>
Case 1: Secure my powerline network .....	2
Case 2: Add Logitech Alert to secured network.....	3
Case 3: Secure Logitech Alert and other powerline device .....	3
Case 4: Add device to Logitech Alert network .....	3
<b>Case 1: Secure my powerline network</b> .....	<b>3</b>
Before Starting .....	3
Set the local network security password .....	3
CASE 1 ADDENDUM: Add the device to your powerline network.....	5
<b>Case 2: Add Logitech Alert to secured network</b> .....	<b>6</b>
Before Starting .....	6
STEP 1: Set the Powerline network back to HomePlugAV default .....	7
STEP 2: Add Logitech Alert network adapter (NA750).....	7
STEP 3: Follow CASE 3 and CASE 4 to get the Logitech Alert system secured with the Powerline Network Password. ....	8
<b>Case 3: Secure Logitech Alert and other powerline device</b> .....	<b>8</b>
Before Starting .....	8
Set a new local network security key.....	8
<b>Case 4: Add device to Logitech Alert network</b> .....	<b>8</b>
Before Starting .....	9
STEP 1: Write down the security key from Logitech Alert Commander .....	9
STEP 2: Add the device to your powerline network .....	9
STEP 3: Register the PWD for a powerline network device .....	10
STEP 4: Exit the Powerline Utility software. ....	10

<b>PowerLine Network Utility overview and field descriptions.....</b>	<b>12</b>
Main Screen overview.....	12
Privacy Tab Overview.....	13
Diagnostics Tab Overview.....	14
About Tab Overview .....	15

*SYSTEM REQUIREMENT NOTE*

*The Powerline Network Utility app is designed for Logitech products using the Atheros HPAV chip. If you want to mix-n-match different brands of HPAV products that may use different chips, you will need to use the utilities provided by those various manufacturers for their products.*

## Powerline Network Utility Overview

The Powerline Utility application can be useful setting, editing, and managing the password for the powerline networking devices on your network. It is also useful when running diagnostics for the powerline network.

The Powerline Network Utility:

- 1) Displays a list of the powerline networking devices or network adapters on your network.
- 2) Tells you:
  - a. the MAC address of the device;
  - b. its data transmission speed (in Mbps)
  - c. lets you store the 16-character device PWD located on the bottom of the network adapter for reference (if you have previously entered it from the device)
- 3) Lets you set a privacy password for powerline devices on the network.
- 4) Generates a diagnostic report.
- 5) Lists the version number for the Powerline Utility Software.

*You do not need to create or enter powerline network passwords, if you have not made your network private. In this case, just plug your HD powerline network adapters into a convenient electrical outlet, then connect an Ethernet cable from the adapter to whatever device (e.g. Logitech Revue, laptop, X-Box, etc.) that you want to add to your home network. That's it!*

## What situations can Powerline Network Utility help me solve?

The Powerline network utility is a tool to help customers in one of the following situations:

### Case 1: Secure my powerline network

I just bought the HD 200a Powerline Starter Kit to connect to a Logitech Revue, X-Box, laptop, or other HomePlug AV powerline device to my LAN over powerline. Now I want to secure my powerline network using a password. (I do not own the Logitech Alert Video Security System.)

## Case 2: Add Logitech Alert to secured network

I have a HomePlug system set up like #1 (no Logitech Alert camera system), but it's secured with a password. I've just bought a Logitech Alert Video Security System and want to get the cameras working together with the network that is connected to my PC.

## Case 3: Secure Logitech Alert and other powerline device

I have a Logitech Alert Video Security System and have not set a network password. I also have an HD 200a Powerline Starter Kit (and Logitech Revue, laptop, X-Box, or other HomePlug AV powerline device) connected to my network. It's all working fine. Now I have decided to secure my HomePlug network by setting a network password.

## Case 4: Add device to Logitech Alert network

I have a Logitech Alert Video Security System and I have set a password. I want to add the HD 200a Powerline Starter Kit to my network so it can connect to my Logitech Revue, laptop, X-Box or other HomePlug AV powerline device.

---

## Case 1: Secure my powerline network

**I just bought the HD 200a Powerline Starter Kit to connect to a Logitech Revue, X-Box, laptop, or other HomePlug AV powerline device to my LAN over powerline. Now I want to secure my powerline network using a password. (I do not own the Logitech Alert Video Security System.)**

### Before Starting

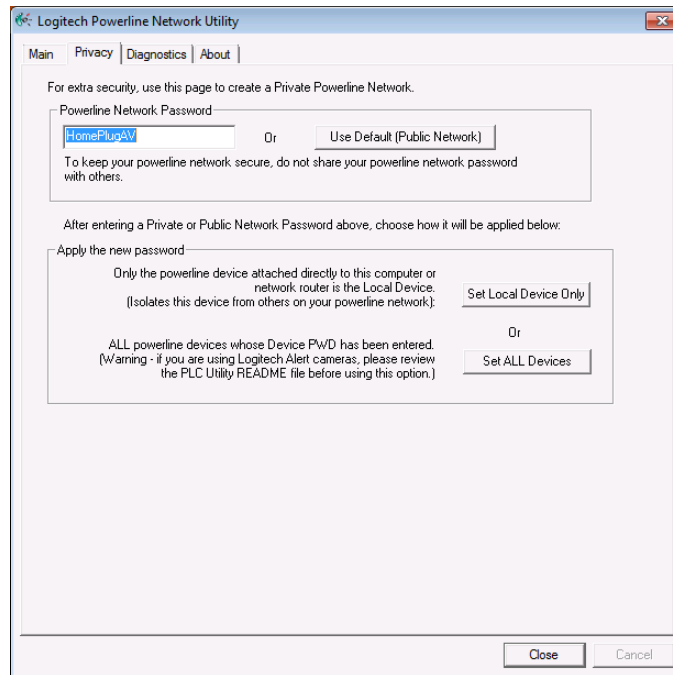
1. Write down the 16-character PWD from the powerline device you wish to add to your existing powerline network. On Logitech powerline products the PWD is found on the label on the device between the PID and MAC addresses.
2. Plug in the network adapter to an electrical socket, and connect its Ethernet port to your router or to the Ethernet port of the PC running the Powerline Utility. Once the network password is set using this procedure, you can plug the network adapter into the outlet and device where you need it. When connected to your router or directly to your PC, the HD 200a is referred to as a "local device". That is, it is "local" to your PC.

### Set the local network security password

1. Click on the Privacy tab. The Privacy tab screen displays.

The Privacy tab allows you to set a network password for the local network device. Because you are adding new HD 200a Powerline network adapters to the network, this screen also allows you to add a powerline device to the network (it provides the network password to the new device), which will enable it to join your private powerline network.

## Powerline Network Utility NA200



### IMPORTANT NOTES

- “HomePlugAV” is the default network password for most HomePlug powerline devices, unless otherwise specified by the manufacturer.
- You can choose a different password for the “Powerline Network Password” that is 4 to 24 characters or numbers long.
- To keep your network private, DO NOT SHARE your powerline password with others.

2. In the Powerline Network Password field, enter the security password you prefer (from 4 to 24 characters long, alphanumeric).
3. Click “Set Local Device Only”. The password is now stored in your powerline network adapter. Repeat this procedure using the same password for each HD200a device you plan to use on your powerline network.
4. Click on the Main tab screen. Check to see that the HD 200a Powerline network adapters you provided passwords to are recognized by the network. (You can compare MAC addresses showing for the devices in the main device list against the MAC addresses from the label of the network adapter.)

**If the network adapters DO NOT display on the list of devices, complete CASE 1 ADDENDUM: Add the device to your powerline network, before continuing.**

5. If the network adapters display on the list of devices, click on a device in the Powerline Devices Detected table so that its row in the list is highlighted.
6. Click “Enter PWD” button on the bottom right of the Main page.

7. In the Device PWD field, enter the PWD # listed on the label on the bottom of the network adapter. This password is case-sensitive and dashes between each set of four characters are required.



8. Click OK.

The PWD # displays and is recorded for that device, and displays in the Device PWD column on the Main screen.

9. Click on the second device so that its row in the list is highlighted and click on the Enter PWD button.
10. Enter the second device's PWD by following instructions 7 & 8.

### **CASE 1 ADDENDUM: Add the device to your powerline network**

If the new device doesn't appear on the Main screen, in the list of devices, complete these instructions:

1. Connect one powerline network adapter's Ethernet port to your router or to the Ethernet port of the PC running the Powerline Utility. Plug the other network adapter into the outlet and device where you need it. (Make note of that adapter's PWD).
2. In the Main tab, click "Add Device." The Add Device to Network Devices dialog will appear asking you to enter your powerline network password ("HomePlug AV" is the default) and the 16-character device PWD for the specific device you want to add. It looks like this:



3. In the Powerline Network Password field, enter the password you have chosen for your powerline network. Be sure you enter the exact same password you've used already. This will be used for the network password for the specified powerline network adapter. All of the powerline network adapters with the same network password will be on the same network.
4. In the Device PWD field, enter the PWD from the label of that network adapter. The PWD is case-sensitive and dashes between each set of four characters are required.
5. Click OK.

The new network adapter now shows up in the device list on the main page. Two MAC addresses are shown. The first is for the powerline device itself, and the next column is the MAC address for the device that is connected to your network through the powerline adapter (i.e. Logitech Revue, laptop, x-box, etc.)

6. Repeat steps 1-4 of the Setting the local network security password.

---

## Case 2: Add Logitech Alert to secured network

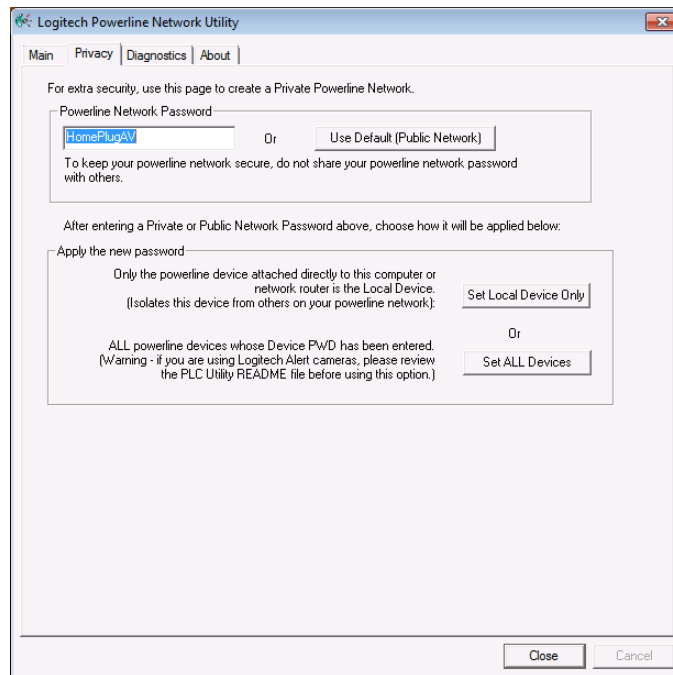
**I have a HomePlug system set up like #1 (no Logitech Alert camera system), but it's secured with a password. I've just bought a Logitech Alert Video Security System and want to get the cameras working together with the network that is connected to my PC.**

### Before Starting

1. Write down the 16-character PWD from each powerline device you wish to add to your existing powerline network (the devices that are not part of the Logitech Alert camera system). On Logitech powerline products the PWD is found on the label on the device between the PID and MAC addresses.
2. Leave all of the parts of the Logitech Alert system unplugged until indicated in the following steps.

## STEP 1: Set the Powerline network back to HomePlugAV default

1. Open the Powerline Utility Tool.
2. Click on the Privacy tab. The Privacy tab screen displays.
3. In the Powerline Network Password field, click on the button “Use Default (Public Network)”.



4. If each device listed on the main screen has the PWD set for it, then click the button “Set ALL Devices.” This will set all the devices back to the default powerline network password. (If the PWD is not set for each device on the main screen, refer to the instructions in CASE 1, steps 6 – 8, but using the default network password instead of a custom network password.)

## STEP 2: Add Logitech Alert network adapter (NA750)

1. Unplug the HD 200a network adapter that was connected to the Ethernet port of your router or the Ethernet port of the PC running the Powerline Utility.
2. Plug in the Logitech Alert network adapter (NA750) to the outlet and device that were previously connected to the HD 200a. You should not plug in another powerline network adapter to the same PC or router (only one is needed).
3. You can plug in the HD 200a or other powerline network adapters into other outlets and devices that need it.

4. Plug in the Logitech Alert cameras and camera power supplies where you need them. You may want to temporarily plug them into outlets in the same room as the Logitech Alert network adapter until after you have discovered the cameras and secured your local camera network.

### **STEP 3: Follow CASE 3 and CASE 4 to get the Logitech Alert system secured with the Powerline Network Password.**

---

#### **Case 3: Secure Logitech Alert and other powerline device**

I have a Logitech Alert Video Security System and have not set a network password. I also have an HD 200a Powerline Starter Kit (and Logitech Revue, laptop, X-Box, or other HomePlug AV powerline device) connected to my network. It's all working fine. Now I have decided to secure my HomePlug network by setting a network password.

#### **Before Starting**

1. Write down the 16-character PWD for each powerline device you wish to have on your powerline network (the devices that are not part of the Logitech Alert Camera system). On Logitech powerline products the PWD is found on the label on the device between the PID and MAC addresses.
2. Plug in the HD 200a network adapter to the outlet and device where you need it.
3. Run the Powerline Utility on the PC that is running Logitech Alert Commander.

#### **Set a new local network security key.**

1. For your Logitech Alert cameras and their network adapter NA750, use the advanced option in the Settings>Security and Web dialog. The Logitech Alert Commander software will let you easily set a local network security key, which will also be used for the network password for your cameras and the powerline network adapter connected to your router. When you use Commander to set this password, it is passed to the PC and Cameras first, then these provide the password to the network adapter and camera power supplies attached to them.
2. Now that the network password has been set for your Logitech Alert system, follow the procedure in Case 4 below for the other devices on your powerline network.

---

#### **Case 4: Add device to Logitech Alert network**

I have a Logitech Alert Video Security System and I have set a password. I want to add the HD 200a Powerline Starter Kit to my network so it can connect to my Logitech Revue, laptop, X-Box or other HomePlug AV powerline device .



## Before Starting

1. Write down the 16-character PWD from the powerline device you wish to add to your existing powerline network (the devices that are not part of the Logitech Alert camera system). On Logitech powerline products the PWD is found on the label on the device between the PID and MAC addresses.
2. Plug in the HD 200a network adapter into the outlet and device where you need it.
3. Run the Powerline Utility on the PC that is running Logitech Alert Commander.

## STEP 1: Write down the security key from Logitech Alert Commander

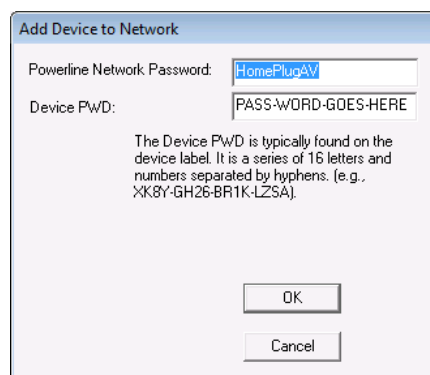
Because you use the Logitech Alert Video Security System and Cameras, and you have set a security key for your Alert camera system, the Alert security key is your powerline network password.

1. Launch the Alert Commander app on your PC.
2. Go to Settings > Security and Web > Advanced and write down the security key in the Secure Local Camera Network checkbox.
3. Exit Alert Commander properly.

## STEP 2: Add the device to your powerline network

1. On the Main tab, click “Add Device.” The new Logitech devices will not appear in the main list.

The Add Device to Network Devices dialog will appear, asking you to enter your powerline network password and the 16-character device PWD for the specific device you want to add. It looks like this:



2. In the Powerline Network Password field, enter the password you have chosen for your powerline network. This will be used for the network password for the specified powerline network adapters. All of the powerline network adapters with the same network password will be on the same network.

3. In the Device PWD field, enter the PWD from the label of that network adapter. This password is case-sensitive and dashes between each set of four characters are required.
4. Click OK.

The new network adapter now shows up in the device list on the main page. Two MAC addresses are shown. The first is for the powerline device itself, and the next column is the MAC address for the device that is connected to your network through the powerline adapter (i.e. Logitech Revue, laptop, x-box, etc.)

### STEP 3: Register the PWD for a powerline network device

Enter the PWD so the utility tool records and saves the PWD number for the device.

1. Click on a device in the Powerline Devices Detected table so that its row in the list is highlighted.
2. Click "Enter PWD" button on the bottom right of the Main page.
3. In the Device PWD field, enter the PWD # listed on the label on the bottom of the network adapter.
4. Click OK.
5. The PWD # displays and is recorded for that device, and displays in the Device PWD column on the Main screen.



The screenshot shows a dialog box titled "Enter Device PWD". It contains the following information:

- TEI: 03
- MAC Address: 00:26:F2:F2:31:EE
- Device PWD: AZAA-GOOZ-RUXL-KLBW

Below the input fields, there is a text box with the following text: "The Device PWD is typically found on the device label. It is a series of 16 letters and numbers separated by hyphens. (e.g., XK8Y-GH26-BR1K-LZSA)." At the bottom of the dialog, there are two buttons: "OK" and "Cancel".

### STEP 4: Exit the Powerline Utility software.



# Glossary

---

## PowerLine Network Utility overview and field descriptions

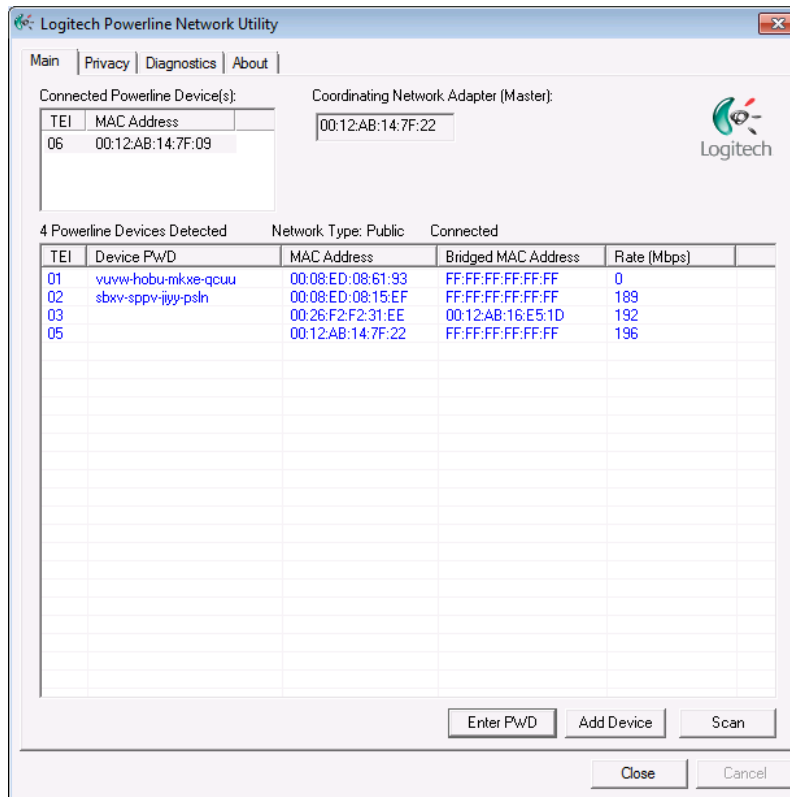
### Main Screen overview

When you open the Powerline Network Utility software, the Main screen displays.

#### Screen Definitions

Connected Powerline Device(s)	MAC Address for the local network device (connected to the same router as the PC).
Coordinating Network Adapter	The master controller for your powerline network. It determines which powerline devices will be allowed access to your network. (This could be any powerline device in your network, and is usually the first one powered up.)
Powerline Devices Detected	Lists the number of powerline devices recognized by the Powerline utility software
TEI	Terminal Equipment Identifier number
Device PWD	The 16-character PWD of an HD Powerline Network Adapter
MAC Address	The MAC Address of the network adapter
Bridged MAC Address	The MAC address for the device the powerline network adapter is connected to (Logitech Alert camera, Squeezebox, X-Box, laptop, etc.)
Rate (Mbps)	The maximum data transmission speed between the local node and each remote device.
Enter Device PWD	Opens a screen that allows you to record the 16-character PWD of a device and have the Powerline Utility save that PWD for identification and easy password changes. .
Add Device	Opens a screen that allows you to enter or edit the network password for your powerline network and enter the 16-character PWD listed on the label of the HD powerline network adapter.
Scan	Searches for all devices on the powerline network. You can click the Scan button to have the powerline utility update the list of devices that are active and authorized to be on your powerline network.
Set ALL Devices	Sets the password for all powerline network devices for which a PWD has been entered on the Main Tab. Do NOT use this button if you are using a Logitech Alert camera system.
Close	Exit the Logitech Powerline Network Utility
Cancel	Back out of a setting that you have just entered.

## Powerline Network Utility NA200



## Privacy Tab Overview

### IMPORTANT NOTES

- “HomePlugAV” is the default network password for most HomePlug powerline devices, unless otherwise specified by the manufacturer.
- You can choose a different password for the “Powerline Network Password” that is 4 to 24 characters or numbers long.
- To keep your network private, DO NOT SHARE your powerline password with others.

**Logitech Alert Video Security Camera Users:** DO NOT USE the Privacy tab to change all of the powerline devices. The Logitech Alert system stores your network password for the cameras as well as each camera’s power supply. Using the PLC Utility’s Privacy tab will NOT change the password in the Alert Cameras, and will require a complex series of steps to bring your Alert system back on line.

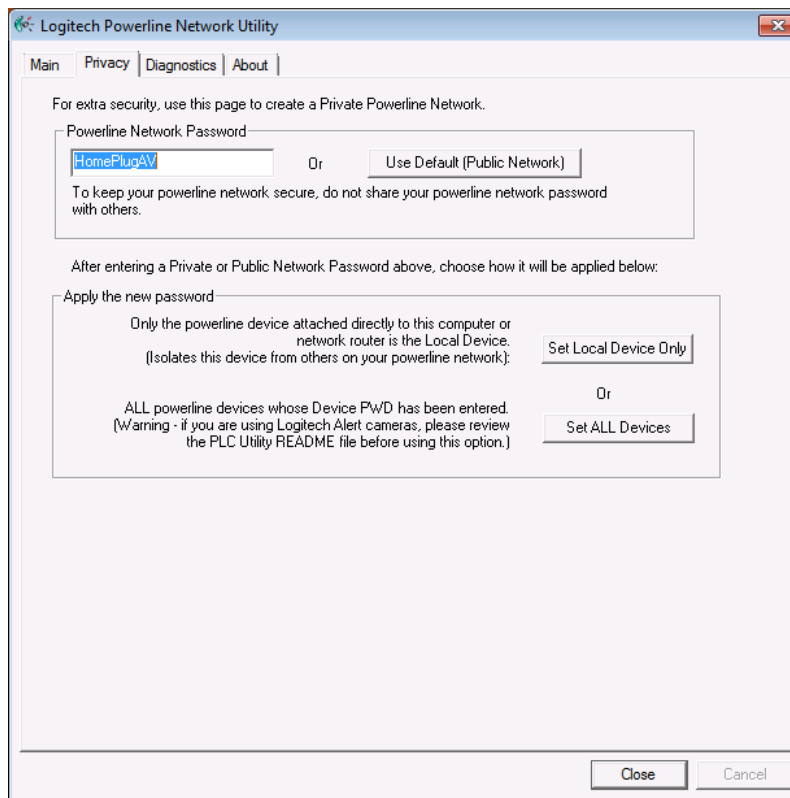
The Privacy tab is applicable if you want to better secure your powerline network by setting a master password for the local network device (i.e. router). It is also applicable if you are adding a powerline device to the network and you want provide the network password for the new device, which will enable it to join your private powerline network.

### Screen Definitions

Powerline Network Password	The default Powerline Network Password is “HomePlugAV.” Use this field to set a different network password for the local device (i.e. router). The password can be from 4 to 24 characters in length.
----------------------------	---

## Powerline Network Utility NA200

Use Default (Public Network)	Reset the Powerline Network Password back to "HomePlugAV".
Set Local Device Only	Use this button only when you want to apply the network password to the powerline device that is connected to the same router as your PC. In this case, the new device will be (temporarily) plugged into your router or PC, so it is operating as a "local" device. This safely changes the password in the new device, without affecting any other units on your powerline network.
Set ALL Devices	Use this button when you want to apply the Powerline Network Password to all devices on the network. DO NOT USE "Set ALL Devices" unless you have all PWDs entered for the devices on the homeplug network. (See instructions: "Assigning the PWD to the network device."). DO NOT USE this option if you are using Logitech Alert Security cameras. Also, DO NOT USE this option if you are using powerline devices that are part of a Logitech Alert System.

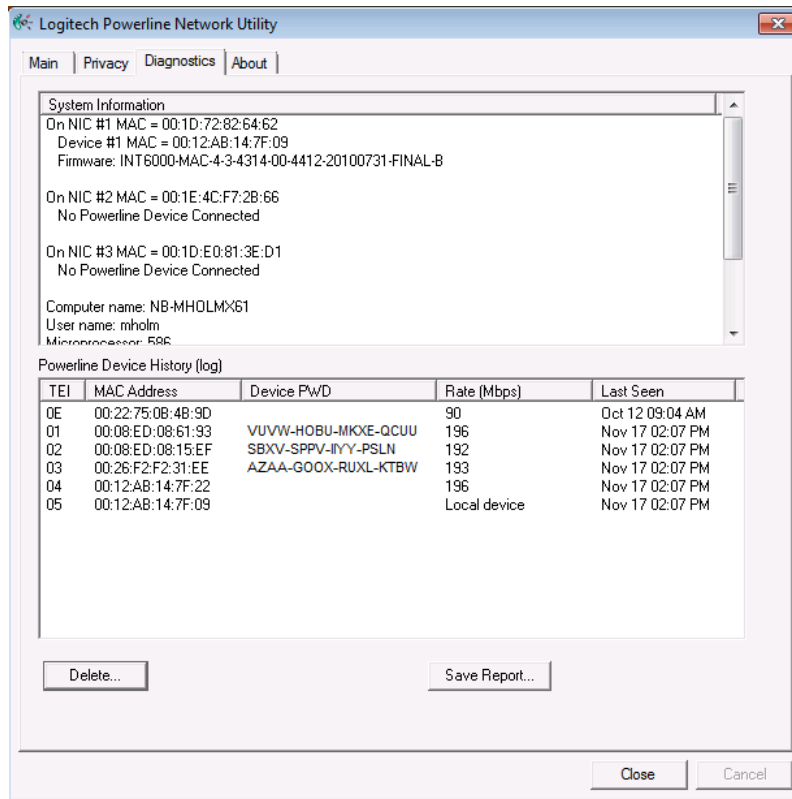


## Diagnostics Tab Overview

The Diagnostics tab displays details and PWD numbers for the devices recognized by the Utility on the powerline network. You can also generate a Diagnostics Report.

If you run the Diagnostics report, the utility creates a plc.data file, as well as a text (.txt) file that you designate in the Save As dialog (i.e. powerline-report-11-10.txt).

## Powerline Network Utility NA200



### About Tab Overview

The About tab displays the version number and build for the Logitech Powerline Network Utility software. Click the Logitech.com button to visit the Logitech.com HD Powerline Network web pages.

